



STORM FRONT

HURRICANE RESISTANT SINGLE HUNG WINDOW - SERIES IW8000

GLASS SIZING NOTE:
REFERENCE U.S. ALUMINUM
CATALOGS AND WEBSITE'S
LOAD CHARTS FOR SIZING
GUIDELINES.

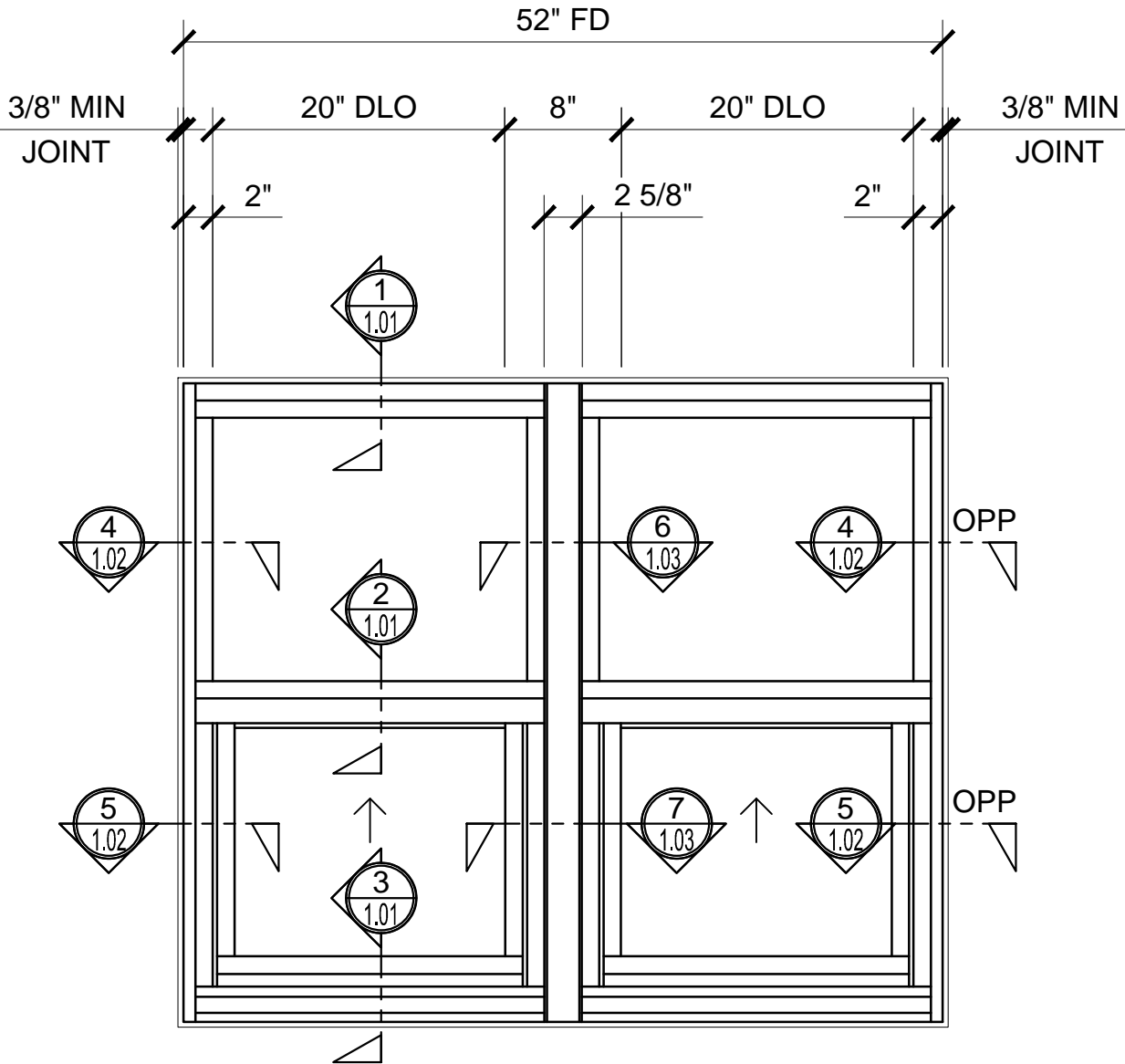
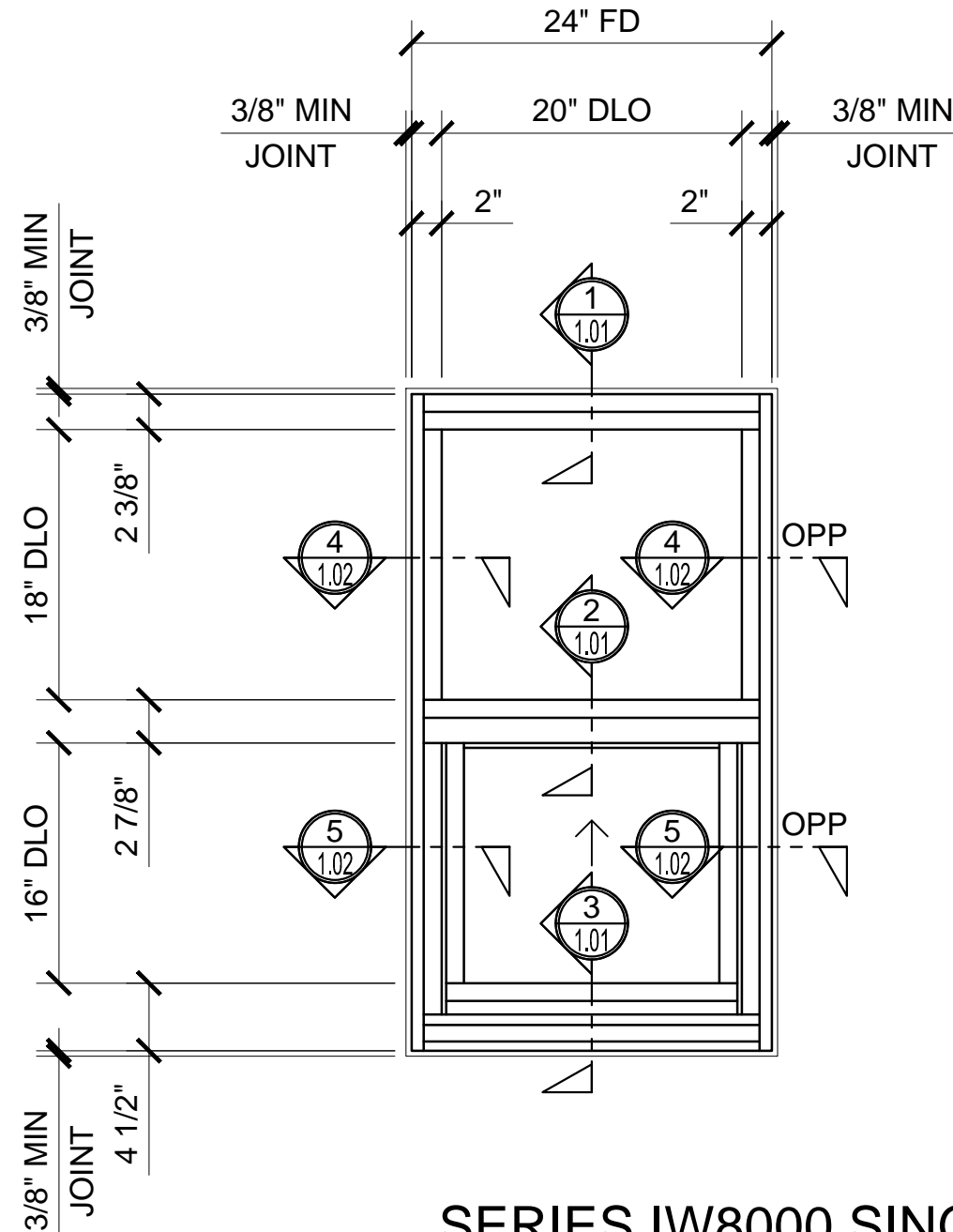
1" = 1'-0"

IW8000 SERIES SPECIFICATIONS

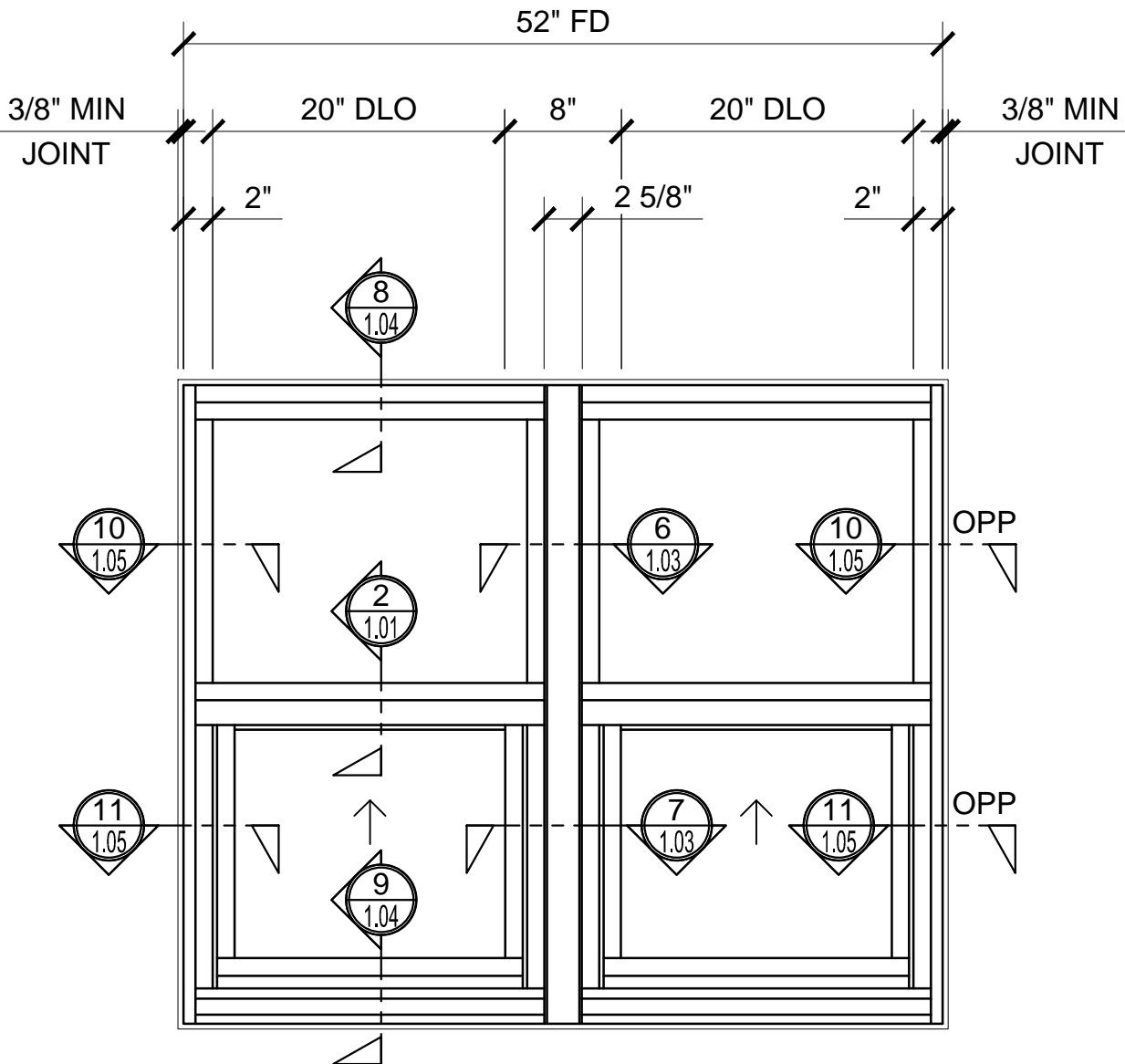
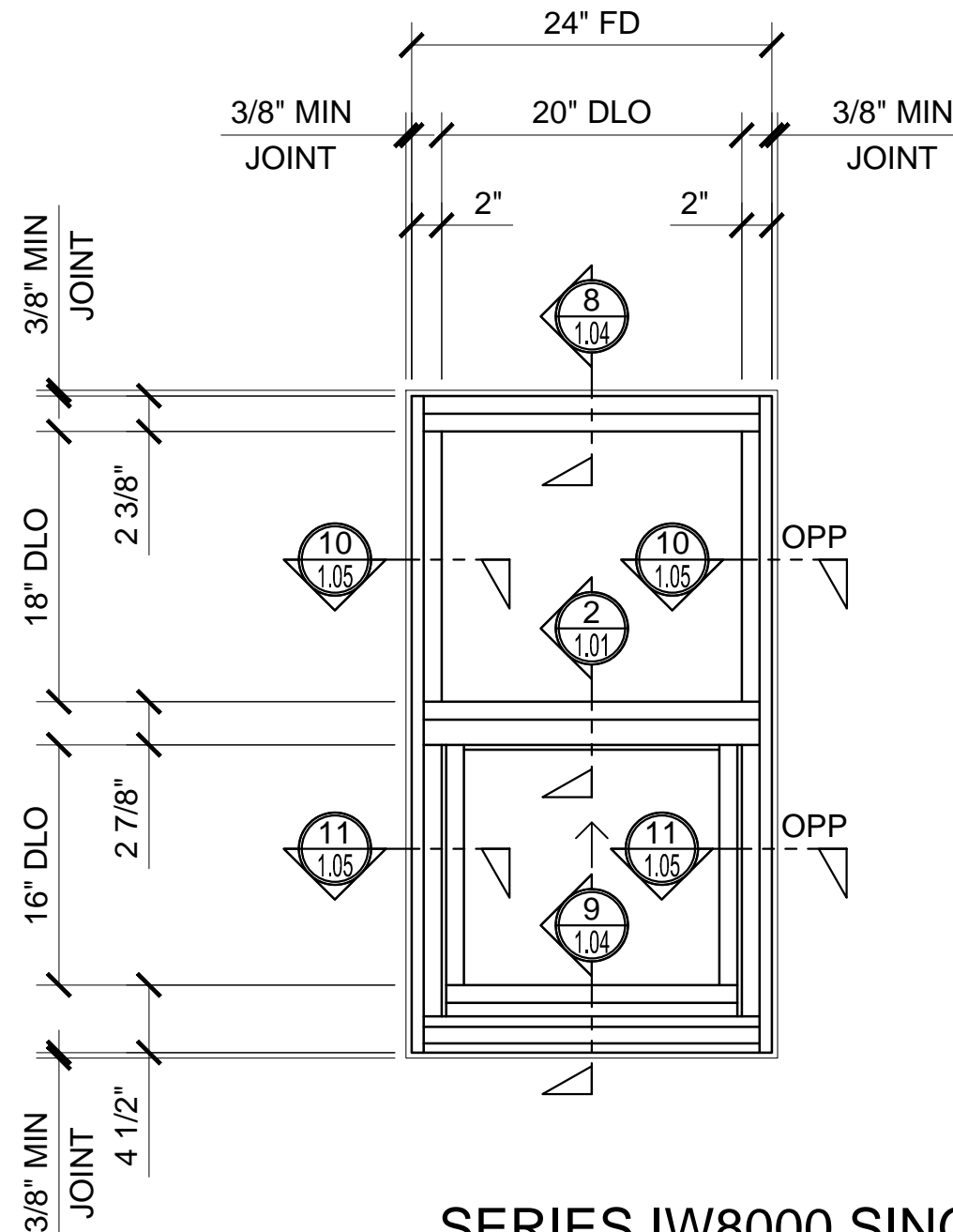
The Series IW8000 Hurricane Resistant Single Hung Window offers a 4-1/2" (114) deep frame designed to match typical building conditions, including our entrances and storefronts. An efficient thermally insulated frame accepts 1-7/32" (31) glazing, with extruded pulls at the interlock and bottom rail. The window features a self-locking latch and Class 5 Balances for ease of operations. Accessories such as Mulling Bars, Subsills, Head and Jamb Channels are available.

The high performance IW8000 Window is both AAMA CW60 Rated and NFRC Certified, and meets the stringent requirements of the Miami / Dade County Protocols TAS 201, 202, and 203 for maximum protection from high winds and wind-borne debris.

4 1/2" (114) Deep Frame to Match Entrances and Storefronts
Accepts 1-7/32" (31) Glazing
AAMA CW60 Rated Window
Thermally Insulated - NFRC Certified
Choice of Block or Fin Frame
Class 5 Balance to Ease of Operation
Available in an Array of Architectural Coatings and Anodized Finishes



SERIES IW8000 SINGLE HUNG WINDOW ELEVATIONS - BLOCK INSTALL



SERIES IW8000 SINGLE HUNG WINDOW ELEVATIONS - FIN INSTALL

STANDARD ABBREVIATIONS

RO ROUGH OPENING
FD FRAME DIMENSION
DLO DAYLIGHT OPENING
DO DOOR OPENING
DD DOOR DIMENSION
SMC SURFACE MOUNTED CLOSER
OHCC OVERHEAD CONCEALED CLOSER

Revisions By:



Discription:
CRL STORM FRONT
HURRICANE RESISTANT
SINGLE HUNG WINDOW
SERIES IW8000
FOR 1-7/32" GLASS

Drawn By: TMG

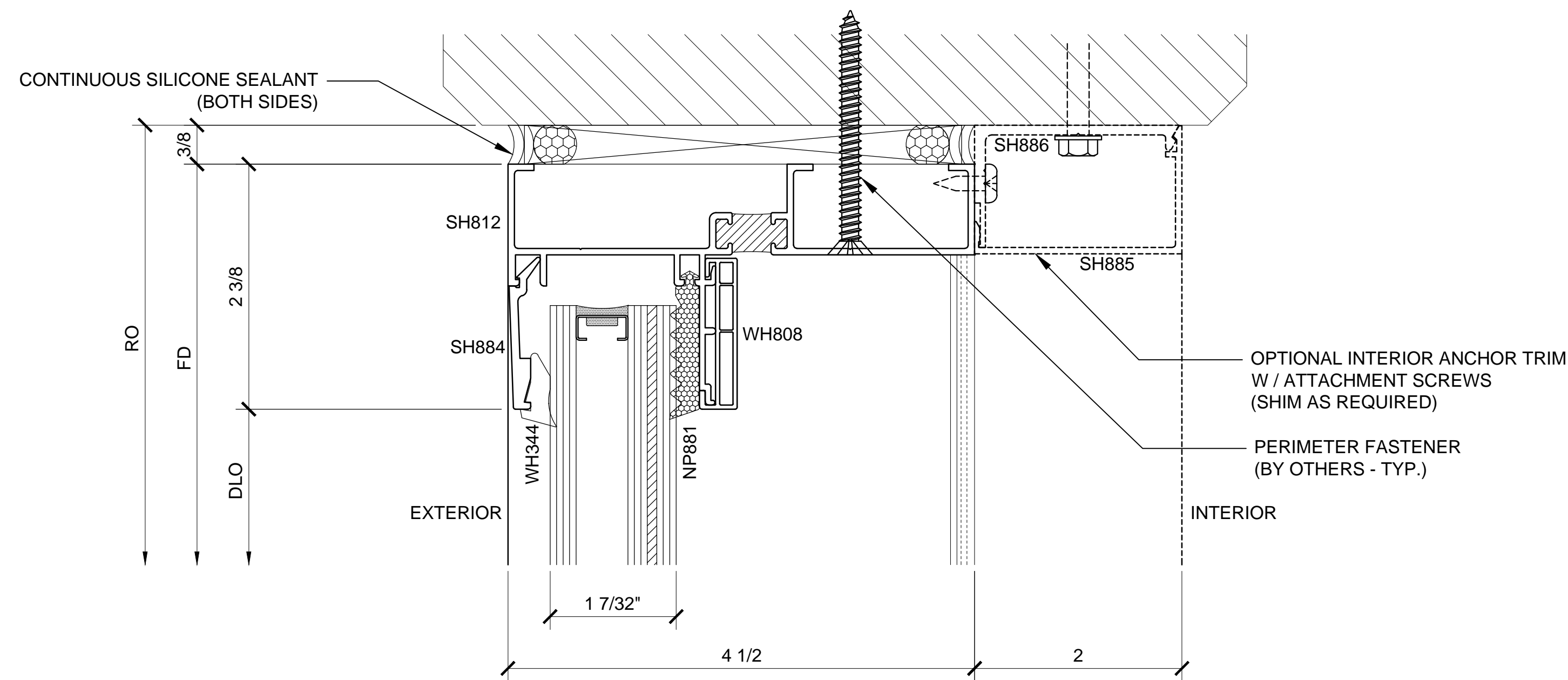
Date: 06/26/15

Scale: AS NOTED

File Name:

IW8000.dwg

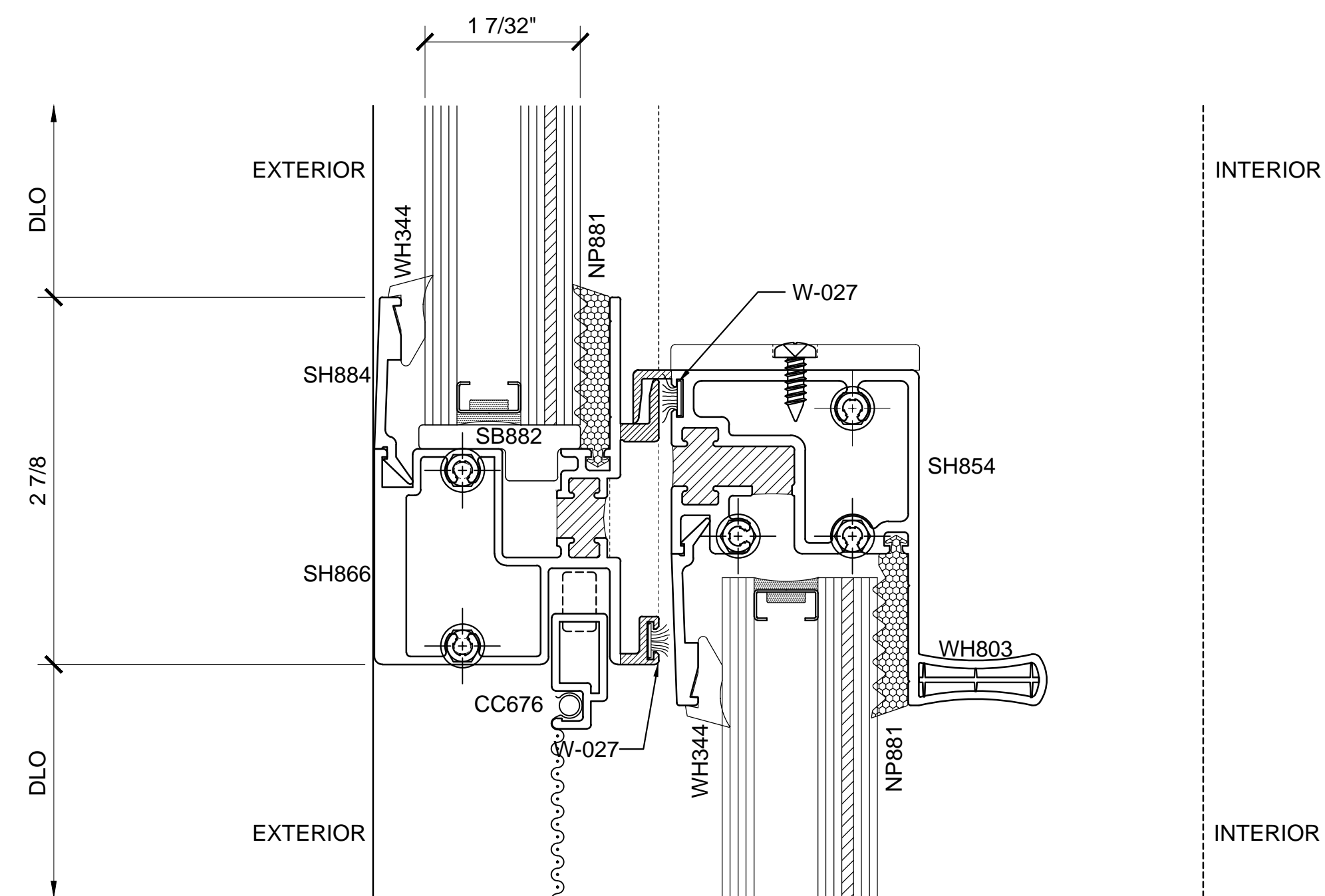
Sheet



① SECTION DETAIL AT HEAD

ARCH REF: N/A

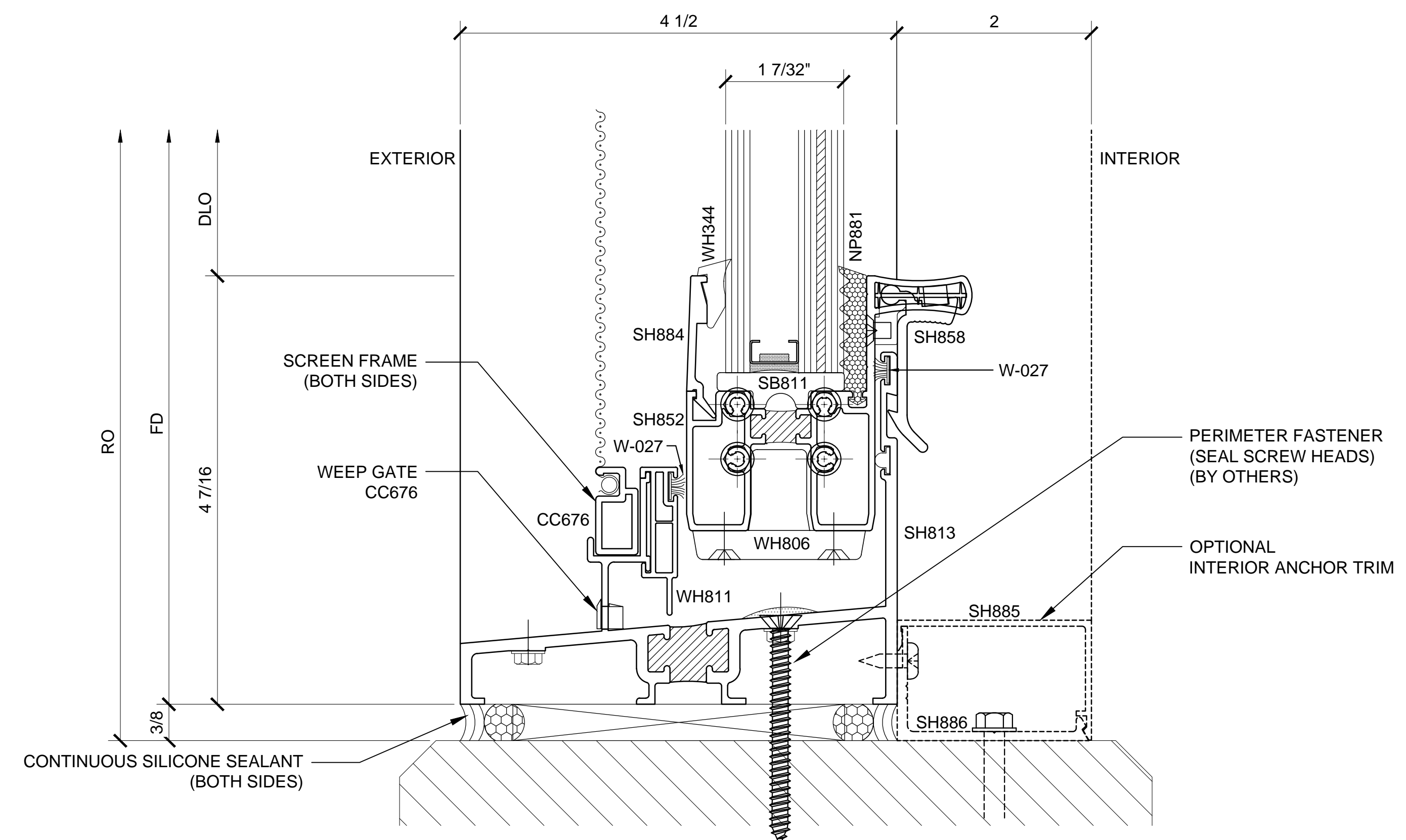
1'-0"=1'-0"



② SECTION DETAIL AT HEAD

ARCH REF: N/A

1'-0"=1'-0"



③ SECTION DETAIL AT SILL

ARCH REF: N/A

1'-0"=1'-0"

HURRICANE RESISTANT SINGLE HUNG WINDOW - IW8000 SERIES DETAILS - BLOCK INSTALL

Revisions By:

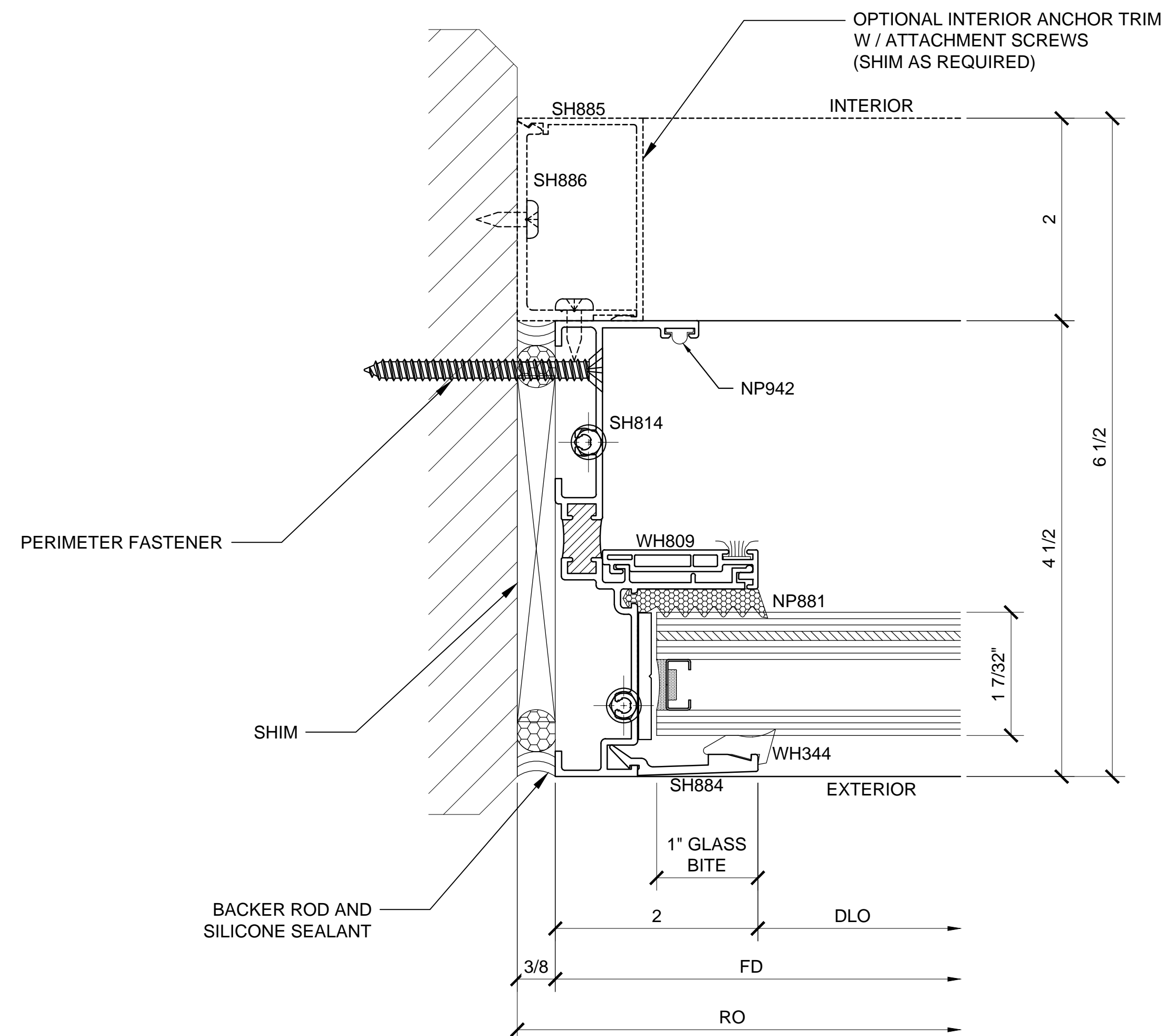
CRL
ALUMINUM
C.R. LAURENCE CO. ARCHITECTURAL PRODUCTS
2503 E. Vernon Avenue, Los Angeles, CA 90058-1897
PH (800) 421-6144 FX 800-587-7301 www.crlaurence.com

Discription:
CRL STORM FRONT
HURRICANE RESISTANT
SINGLE HUNG WINDOW
SERIES IW8000
FOR 1-7/32" GLASS

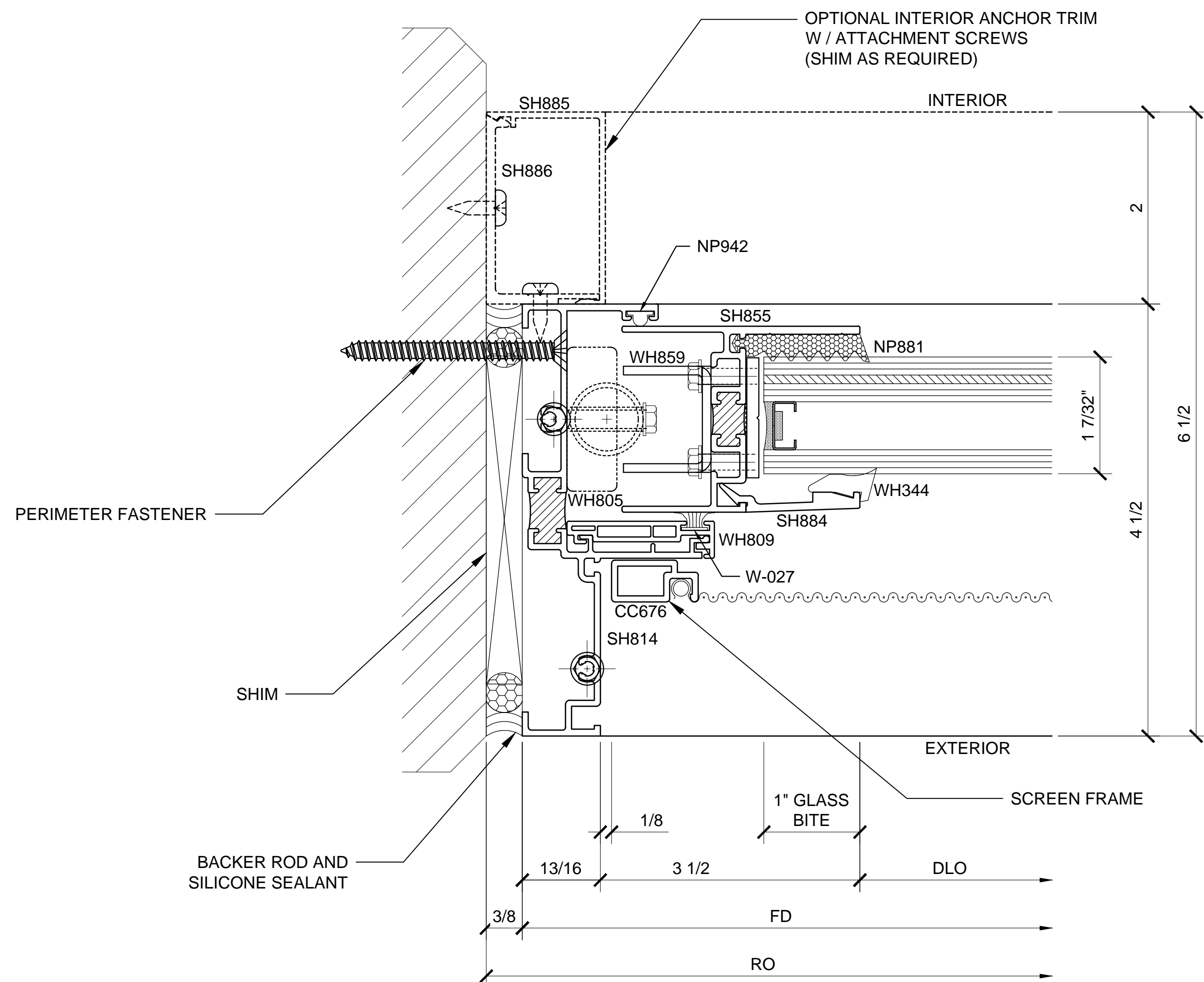
Drawn By: TMG
Date: 06/26/15
Scale: AS NOTED
File Name:
IW8000.dwg

Sheet

1.01

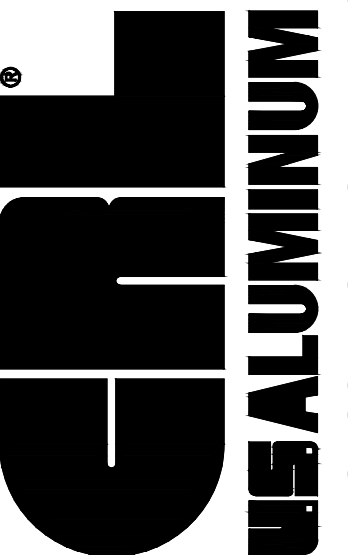


④ SECTION DETAIL AT JAMB
 ARCH REF: N/A 1'-0"=1'-0"



⑤ SECTION DETAIL AT JAMB
 ARCH REF: N/A 1'-0"=1'-0"

HURRICANE RESISTANT SINGLE HUNG WINDOW - IW8000 SERIES DETAILS - BLOCK INSTALL

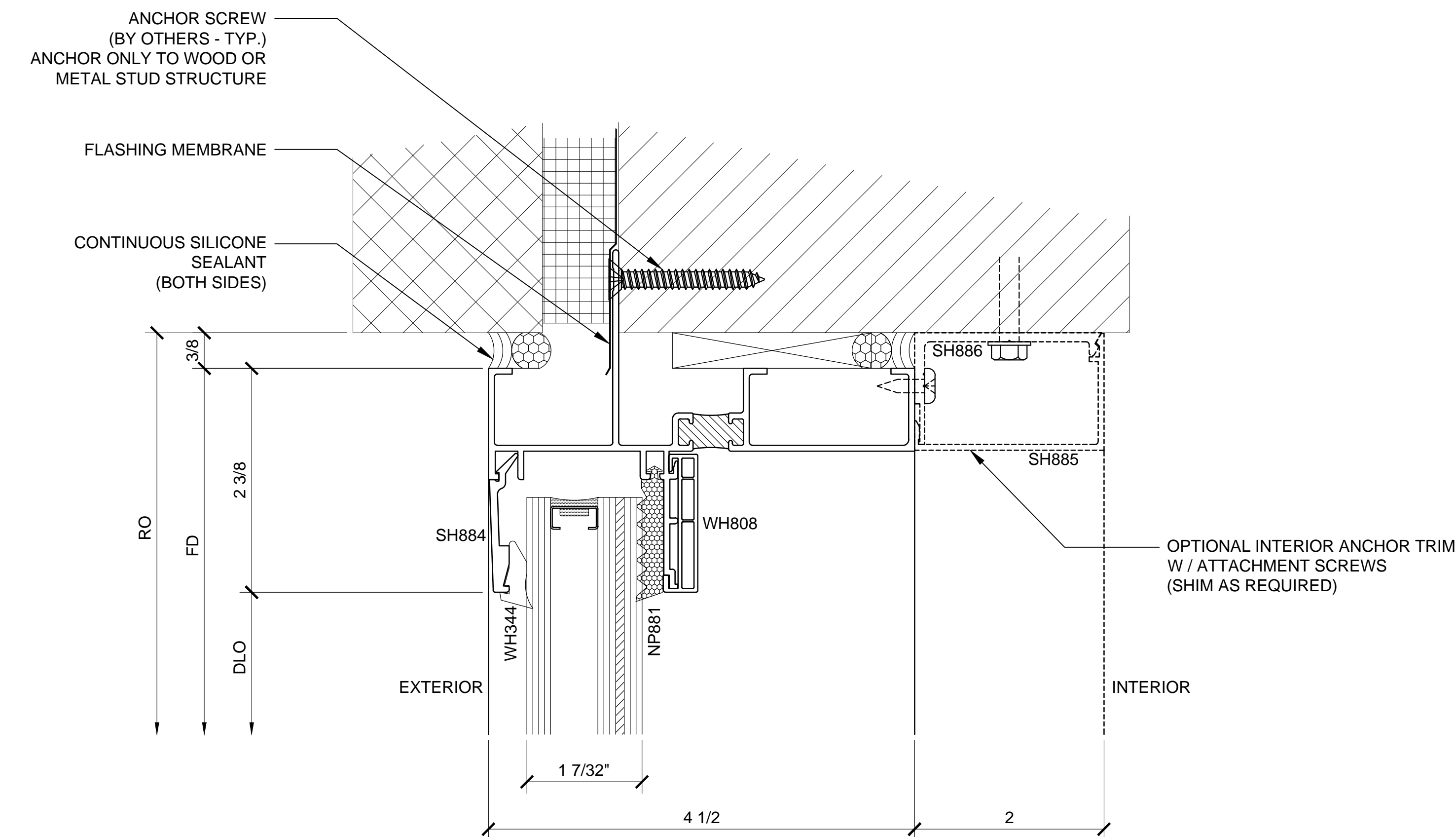
Revisions By:	
 <p>C.R. LAURENCE CO. ARCHITECTURAL PRODUCTS 2503 E. Vernon Avenue, Los Angeles, CA 90058-1897 PH (800) 421-6144 FX 800-597-7301 www.crlaurence.com</p>	
Discription: CRL STORM FRONT HURRICANE RESISTANT SINGLE HUNG WINDOW SERIES IW8000 FOR 1-7/32" GLASS	
Drawn By: TMG Date: 06/26/15 Scale: AS NOTED File Name: IW8000.dwg	Sheet 1.02


$$1'-0''=1'-0''$$

$$1'-0''=1'-0'''$$

Discription:
CRL STORM FRONT
HURRICANE RESISTANT
SINGLE HUNG WINDOW
SERIES IW8000
FOR 1-7/32" GLASS

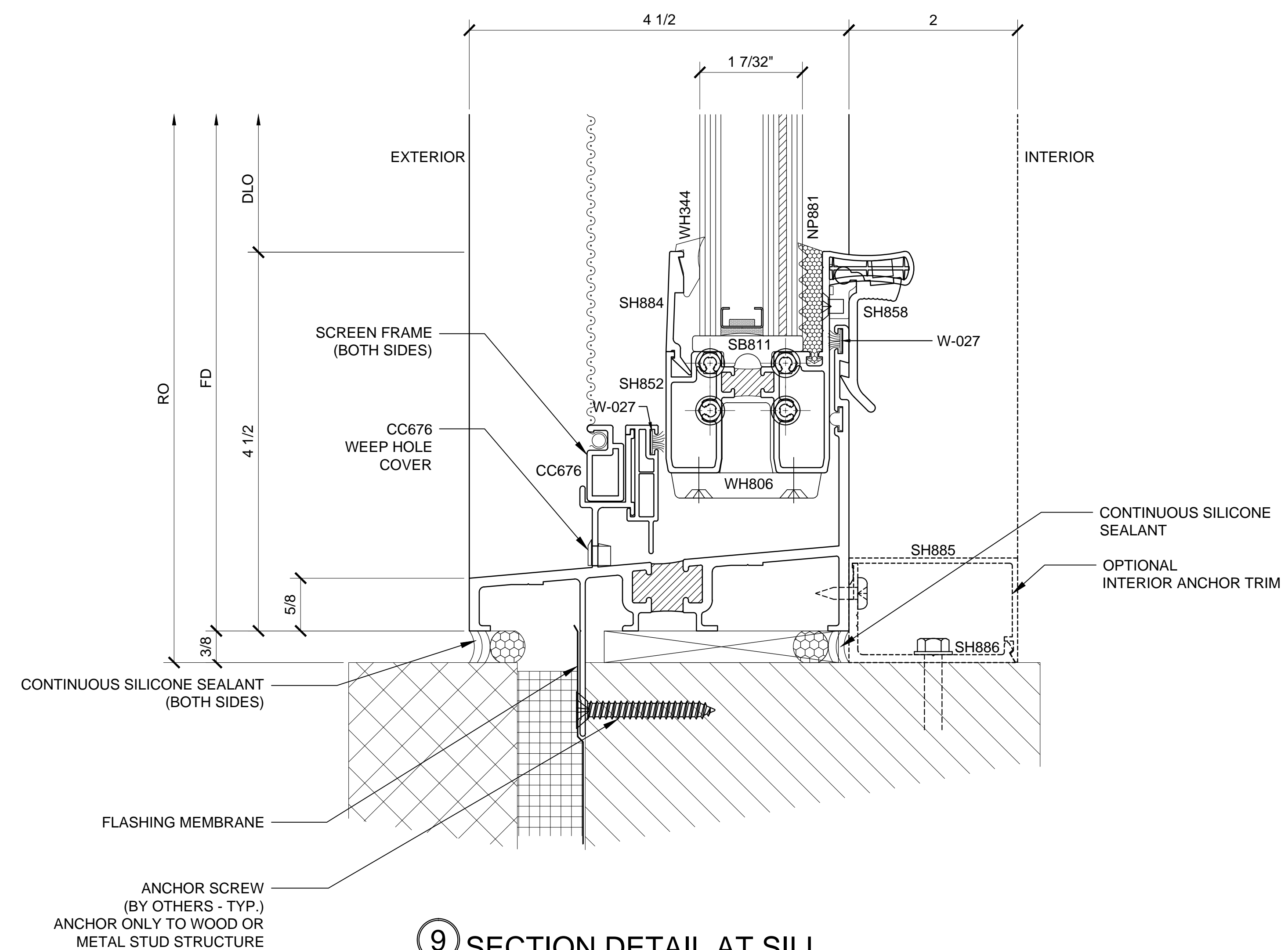
Sheet



8 SECTION DETAIL AT HEAD

ARCH REF: N/A

1'-0"=1'-0"



9 SECTION DETAIL AT SILL

ARCH REF: N/A

1'-0"=1'-0"

HURRICANE RESISTANT SINGLE HUNG WINDOW - IW8000 SERIES DETAILS - FIN FRAME INSTALL

Revisions By:

CRL
US ALUMINUM
 C.R. LAURENCE CO. ARCHITECTURAL PRODUCTS
 2503 E. Vernon Avenue, Los Angeles, CA 90058-1897
 PH (800) 421-6144 FX 800-587-7301 www.crlaurence.com

Discription:
 CRL STORM FRONT
 HURRICANE RESISTANT
 SINGLE HUNG WINDOW
 SERIES IW8000
 FOR 1-7/32" GLASS

Drawn By: TMG

Date: 06/26/15

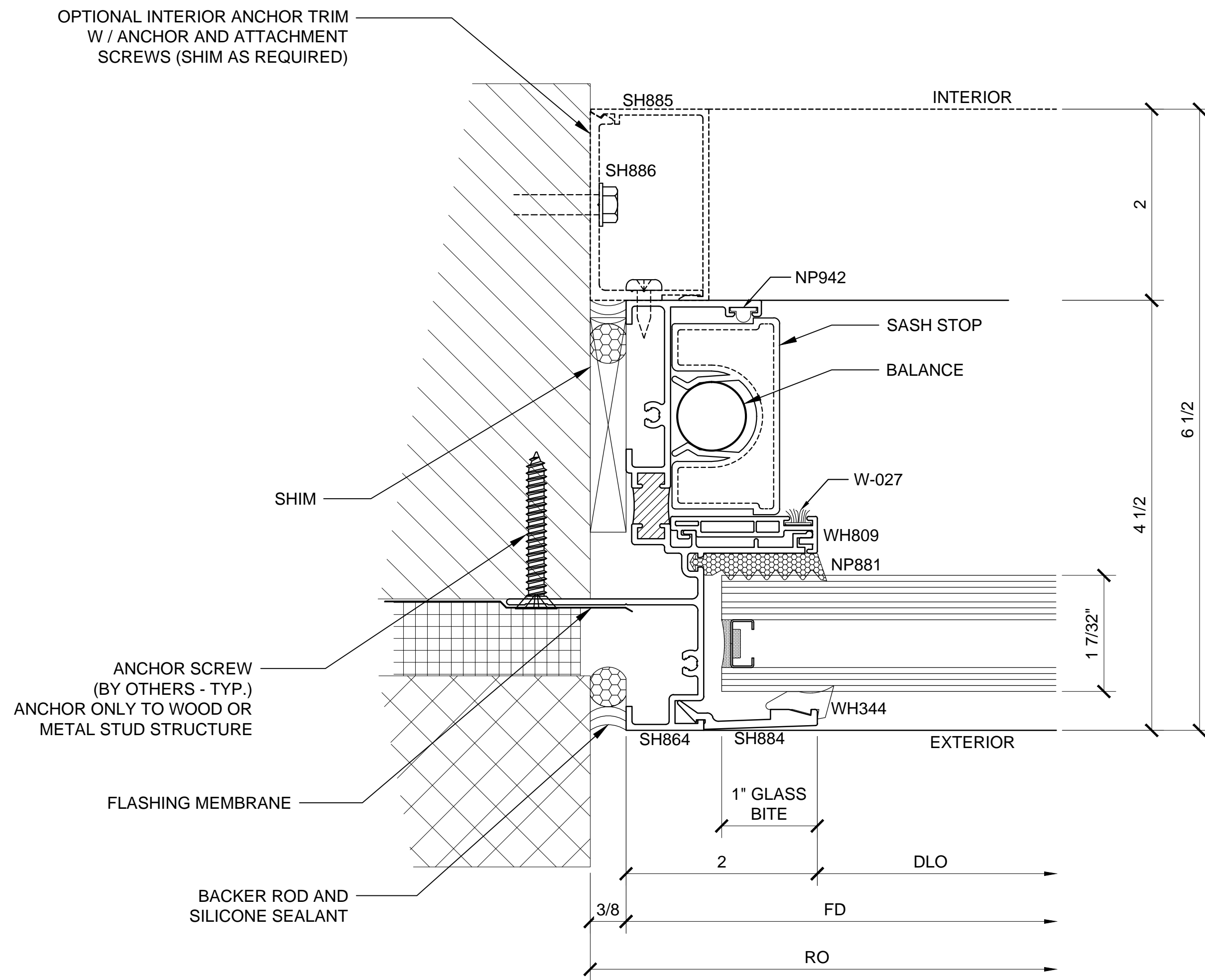
Scale: AS NOTED

File Name:

IW8000.dwg

Sheet

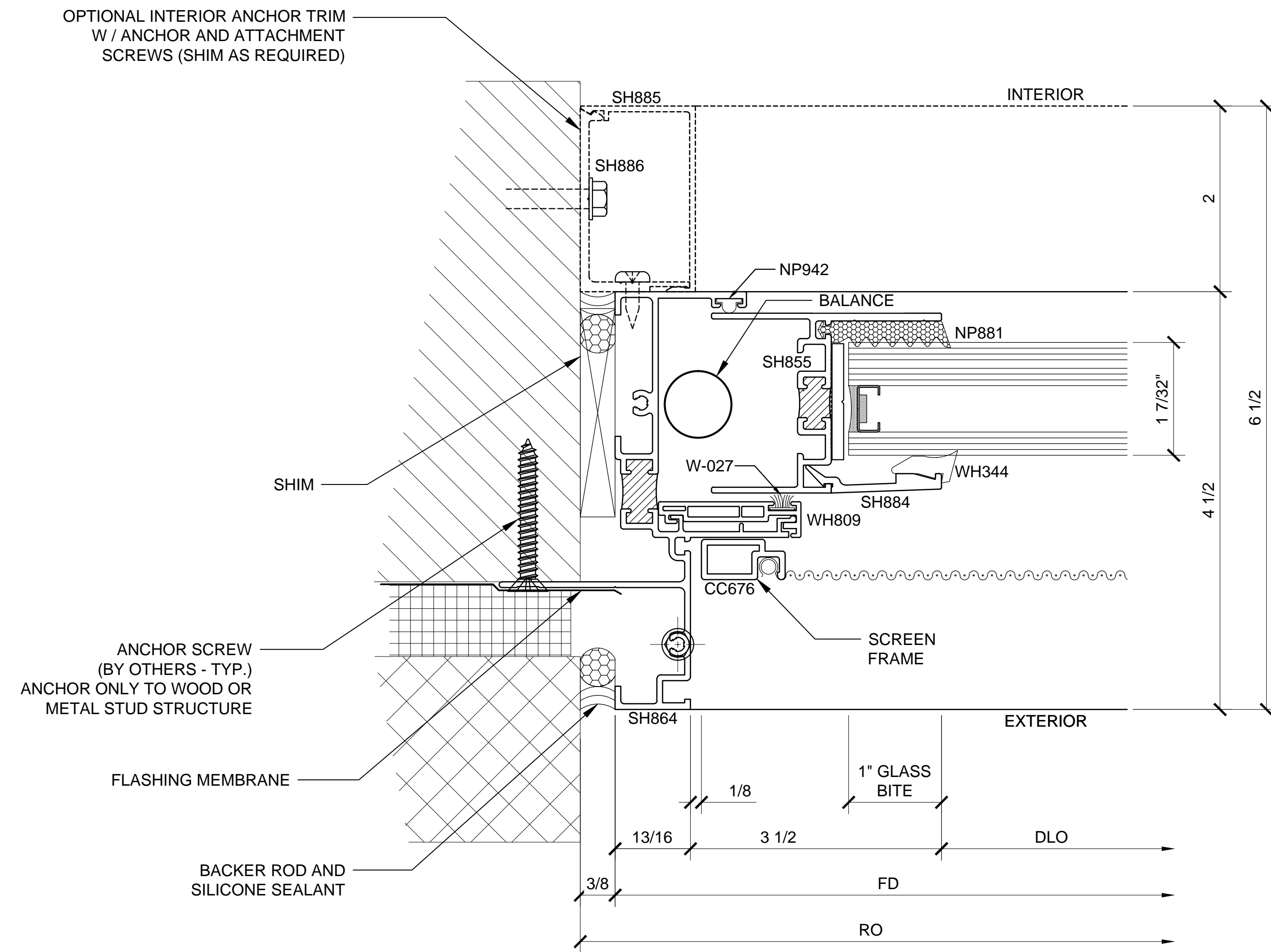
1.04



10 SECTION DETAIL AT JAMB

ARCH REF: N/A

1'-0"=1'-0"



11 SECTION DETAIL AT JAMB

ARCH REF: N/A

1'-0"=1'-0"