

U.S. ALUMINUM WINDOW WALL BG SYSTEMS

SERIES BG600

WINDOW WALL BG600 SYSTEMS SPECIFICATIONS

TECHNICAL DATA:

BG600 Systems are ideal for a low to mid-rise structural silicone glazed fixed horizontal ribbon window. These systems were designed for three types of configuration: two-sided structural silicone support; captured glazing; a combination of these two configurations.

Designed for stacking installation, these systems may be glazed from the interior or exterior.

Dual or two-tone colors can be achieved by specifying different finishes for the optional exterior face covers and interior mullions.

SPECIAL FEATURES:

- \* The sill channel provides a continuous gutter for exterior weepage through elongated baffled weep holes. Injection Molded End Dams are provided for sealing the gutter ends. Back portion of the channel remains dry where sill is anchored to the structure.
- \* A uniquely designed Injection Molded Water Deflector is used for weeping infiltrated water to the exterior at the intersection of the intermediate horizontal and vertical mullions. The Contoured Water Deflector allows for an uninterrupted gasket seal at the intersection of intermediate horizontal and vertical mullions.
- \* Reusable Twist-in Temporary Glass Retainers hold the glass in place during the structural silicone curing period. The plastic retainer is designed to work for both 1" (25) and 1/4" (6) infills.

SERIES	FACE WIDTH	DEPTH	GLAZING INFILLS	GLAZING METHOD
BG600	2-1/4" (57.2)	6" (152.4)	1" (25)	Exterior / Interior

STANDARD ABBREVIATIONS

RO	ROUGH OPENING
FD	FRAME DIMENSION
DLO	DAYLIGHT OPENING
DO	DOOR OPENING
DD	DOOR DIMENSION
SMC	SURFACE MOUNTED CLOSER
OHCC	OVERHEAD CONCEALED CLOSER

TABLE OF CONTENTS:

#	SHEET	D E S C R I P T I O N
1	COVER	TABLE OF CONTENTS / SPECIFICATIONS / SPECIAL FEATURES
2	4.01	WINDOW WALL SERIES BG600 TYPICAL ELEVATIONS
3	4.01a	WINDOW WALL SERIES BG600 TYPICAL ELEVATIONS
4	4.01b	WINDOW WALL SERIES BG600 TYPICAL ELEVATIONS
5	4.01c	WINDOW WALL SERIES BG600 TYPICAL ELEVATIONS
6	4.02	WINDOW WALL SERIES BG600 DETAILS
7	4.03	WINDOW WALL SERIES BG600 DETAILS
8	4.04	WINDOW WALL SERIES BG600 DETAILS
9	4.05	WINDOW WALL SERIES BG600 DETAILS
10	4.06	WINDOW WALL SERIES BG600 DETAILS
11	4.07	WINDOW WALL SERIES BG600 DETAILS
12	4.08	WINDOW WALL SERIES BG600 DETAILS
13	4.09	WINDOW WALL SERIES BG600 DETAILS
14	4.10	WINDOW WALL SERIES BG600 DETAILS
15	4.11	WINDOW WALL SERIES BG600 DETAILS

Revisions By:

Discription:

U.S. ALUMINUM  
WINDOW WALL - BG  
SERIES BG600  
SYSTEM DRAWINGS

Drawn By: RPD

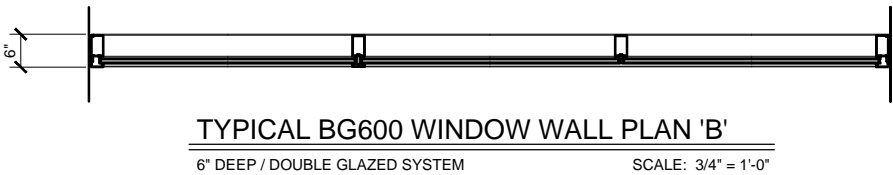
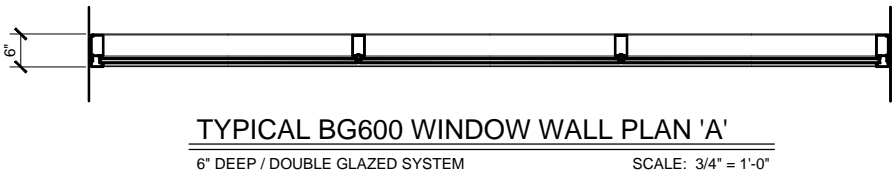
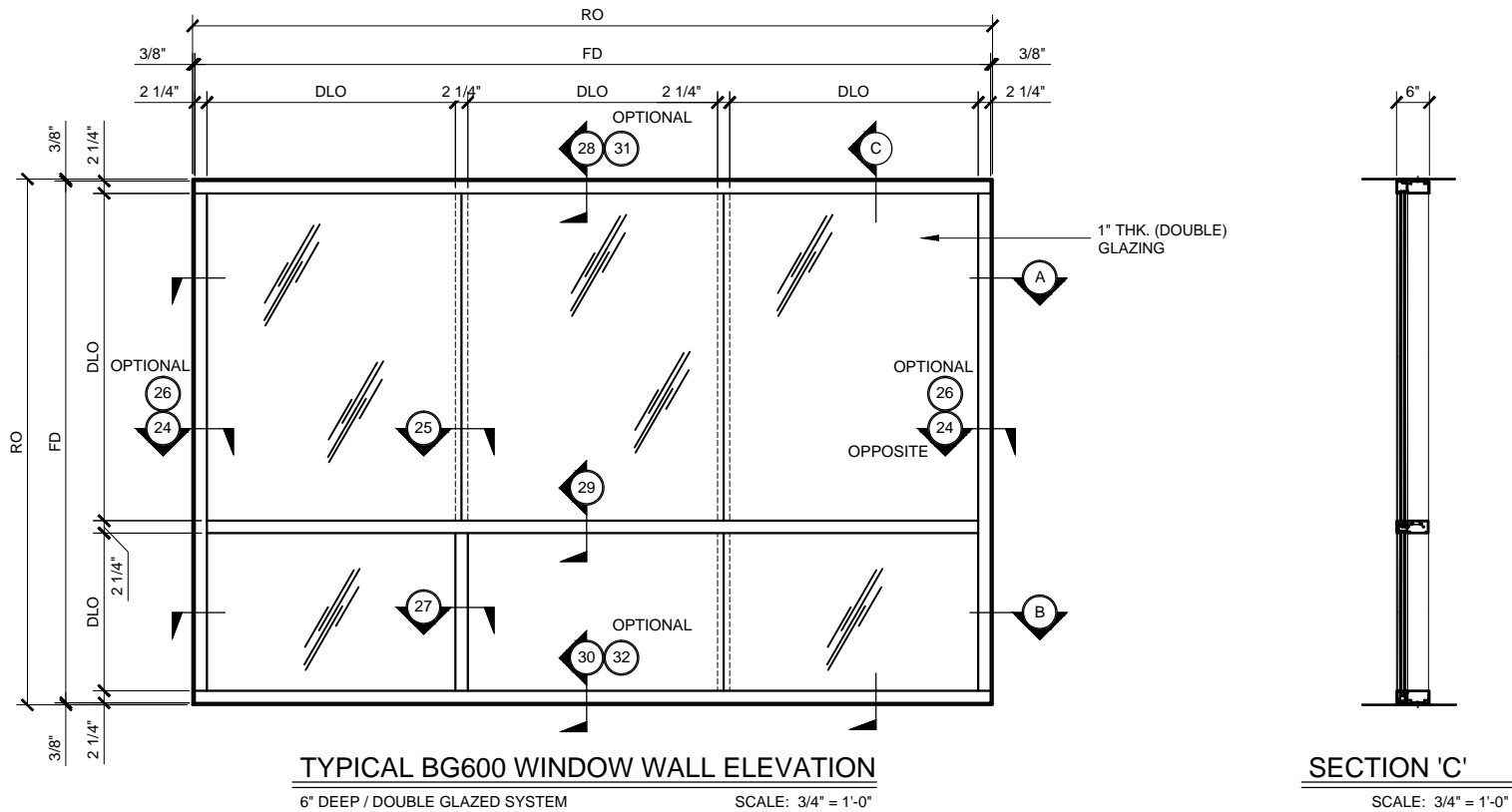
Date: 03/23/15

Scale: AS NOTED

File Name: BG600.dwg

Sheet

COVER




STANDARD ABBREVIATIONS	
RO	ROUGH OPENING
FD	FRAME DIMENSION
DLO	DAYLIGHT OPENING
DO	DOOR OPENING
DD	DOOR DIMENSION
SMC	SURFACE MOUNTED CLOSER
OHCC	OVERHEAD CONCEALED CLOSER

WINDOW WALL SERIES BG600 TYPICAL ELEVATIONS

6" DEEP SYSTEM

Revisions By:



C.R.LAURENCE CO. ARCHITECTURAL PRODUCTS

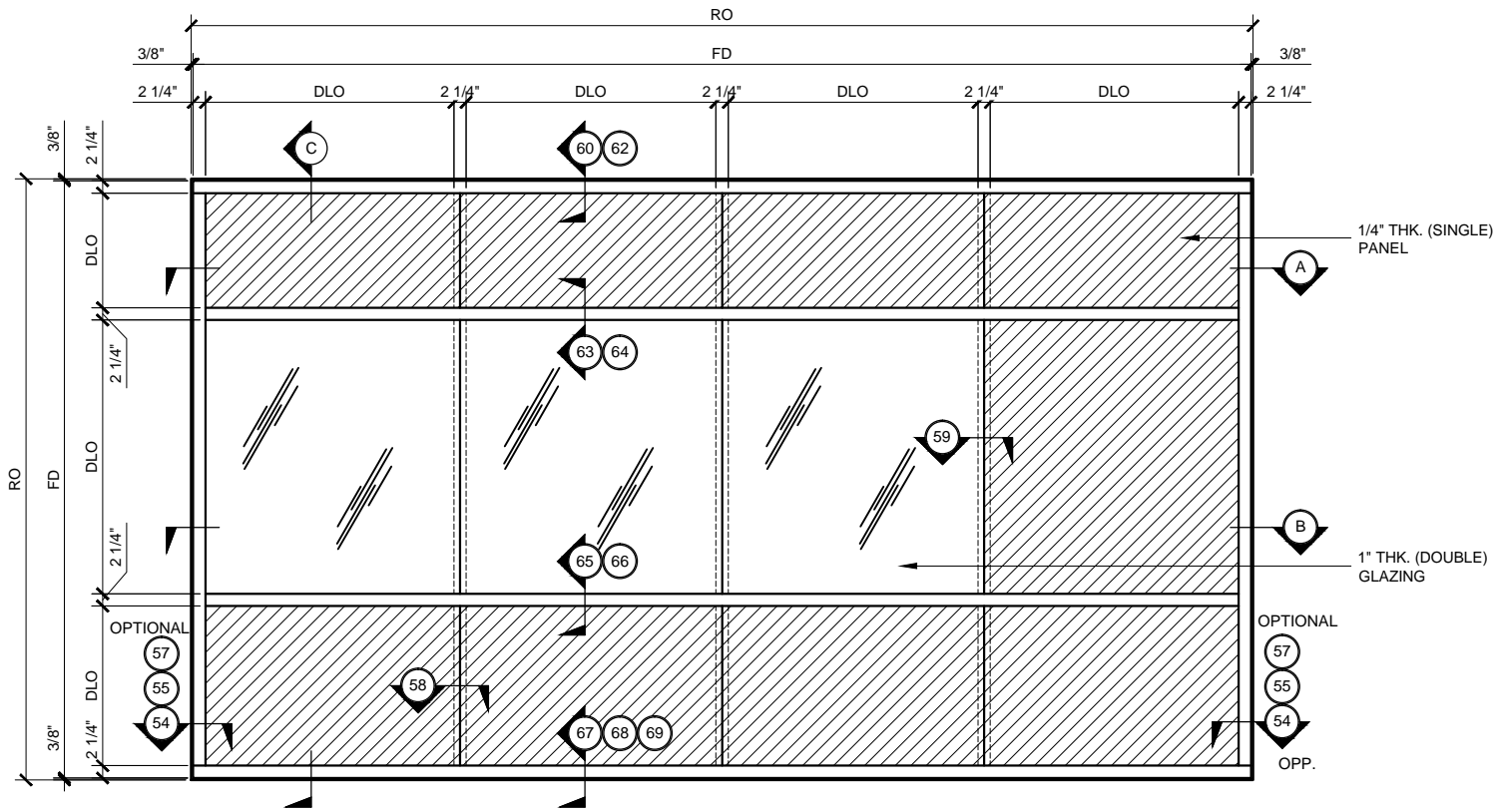
2503 E. Vernon Avenue, Los Angeles, CA 90058-1897

PH (800) 421-6144 FX (800) 587-7501 www.crlaurence.com

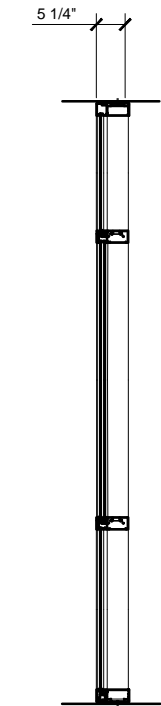
Discription:  
U.S. ALUMINUM  
WINDOW WALL - BG  
SERIES BG600  
SYSTEM DRAWINGS

Drawn By: RPD  
Date: 03/23/15  
Scale: AS NOTED  
File Name: BG600.dwg  
Sheet

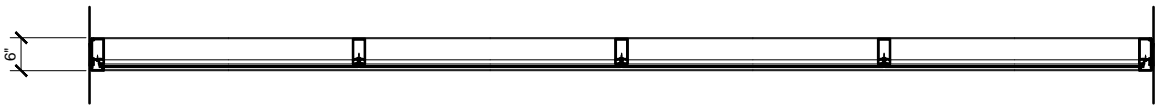
4.01



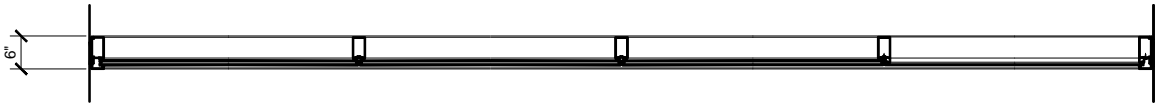
BG600 WINDOW WALL TRANSITION ELEVATION  
6" DEEP / DOUBLE GLAZED - SINGLE GLAZED SYSTEM  
SCALE: 3/4" = 1'-0"



SECTION 'C'  
SCALE: 3/4" = 1'-0"



BG600 WINDOW WALL TRANSITION PLAN 'A'  
6" DEEP / DOUBLE GLAZED - SINGLE GLAZED SYSTEM  
SCALE: 3/4" = 1'-0"



BG600 WINDOW WALL TRANSITION PLAN 'B'  
6" DEEP / DOUBLE GLAZED - SINGLE GLAZED SYSTEM  
SCALE: 3/4" = 1'-0"

STANDARD ABBREVIATIONS	
RO	ROUGH OPENING
FD	FRAME DIMENSION
DLO	DAYLIGHT OPENING
DO	DOOR OPENING
DD	DOOR DIMENSION
SMC	SURFACE MOUNTED CLOSER
OHCC	OVERHEAD CONCEALED CLOSER

WINDOW WALL SERIES BG600 TYPICAL ELEVATIONS  
6" DEEP SYSTEM

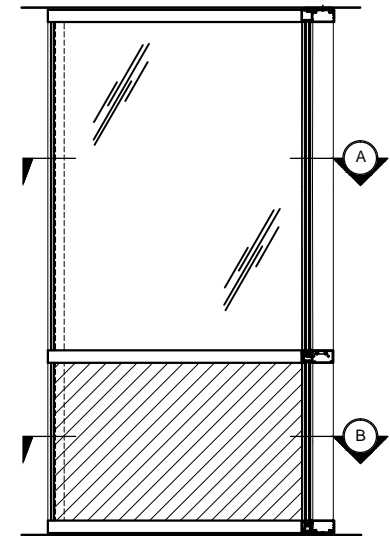
Revisions By:



U.S. ALUMINUM WINDOW WALL SERIES BG600 SYSTEM

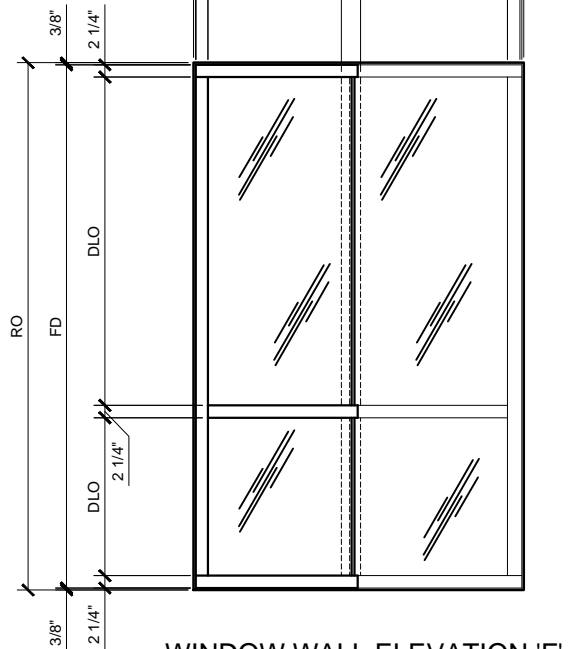
Revisions By:

**EAL**  
ALUMINUM  
C.R.LAURENCE CO. ARCHITECTURAL PRODUCTS  
2533 E. Vernon Avenue, Los Angeles, CA 90058-1897  
PH (800) 421-6144 FX (800) 587-7501 www.crlaurence.com



WINDOW WALL ELEVATION 'E'

SCALE: 3/4" = 1'-0"

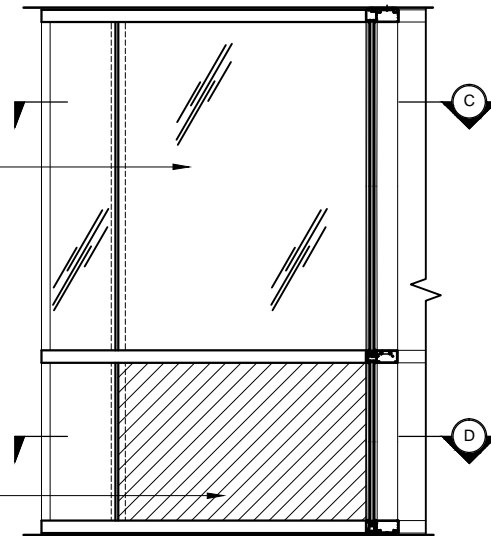


WINDOW WALL ELEVATION 'F'

SCALE: 3/4" = 1'-0"

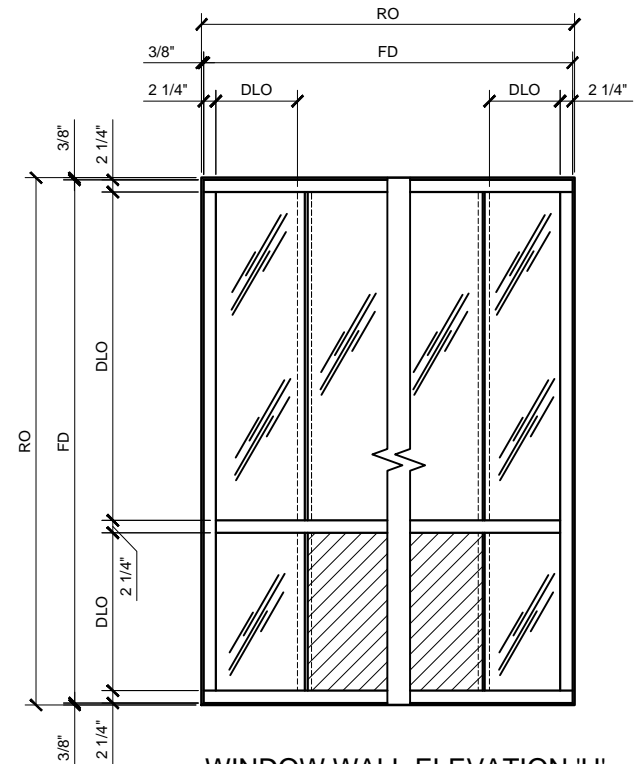
1/4" THK. (SINGLE)  
PANEL

1" THK. (DOUBLE)  
GLAZING



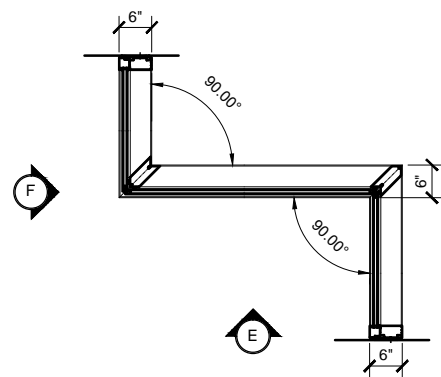
WINDOW WALL ELEVATION 'G'

SCALE: 3/4" = 1'-0"



WINDOW WALL ELEVATION 'H'

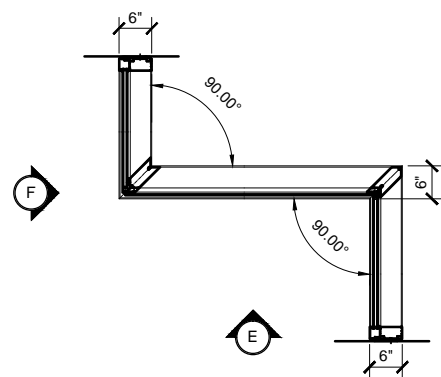
SCALE: 3/4" = 1'-0"



TYPICAL BG600 WINDOW WALL PLAN 'A'

6" DEEP / DOUBLE GLAZED  
90° CORNER CONDITIONS

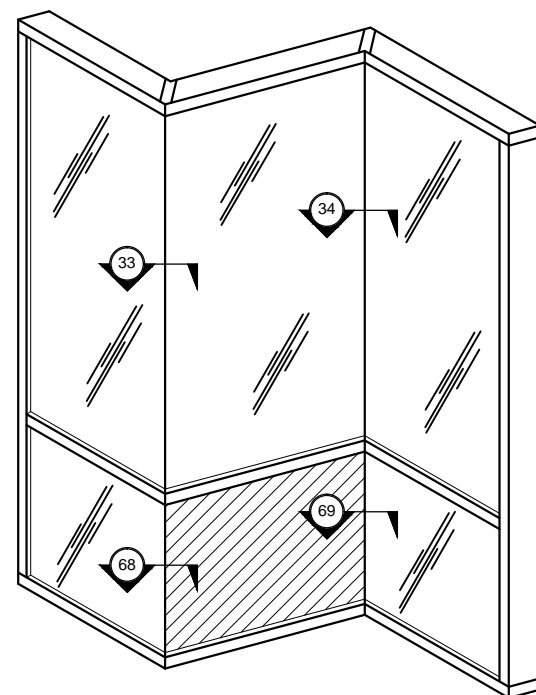
SCALE: 3/4" = 1'-0"



TYPICAL BG600 WINDOW WALL PLAN 'B'

6" DEEP / DOUBLE GLAZED - SINGLE  
GLAZED SYSTEM

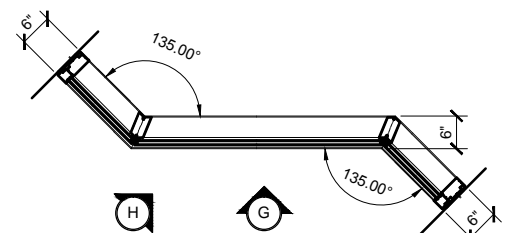
SCALE: 3/4" = 1'-0"



BG600 90 DEGREE CORNER ELEVATION

6" DEEP / DOUBLE GLAZED - SINGLE  
GLAZED SYSTEM

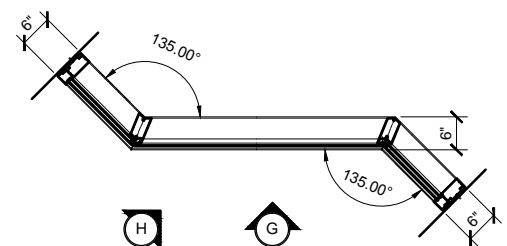
SCALE: 3/4" = 1'-0"



TYPICAL BG600 WINDOW WALL PLAN 'C'

6" DEEP / DOUBLE GLAZED  
135° CORNER CONDITIONS

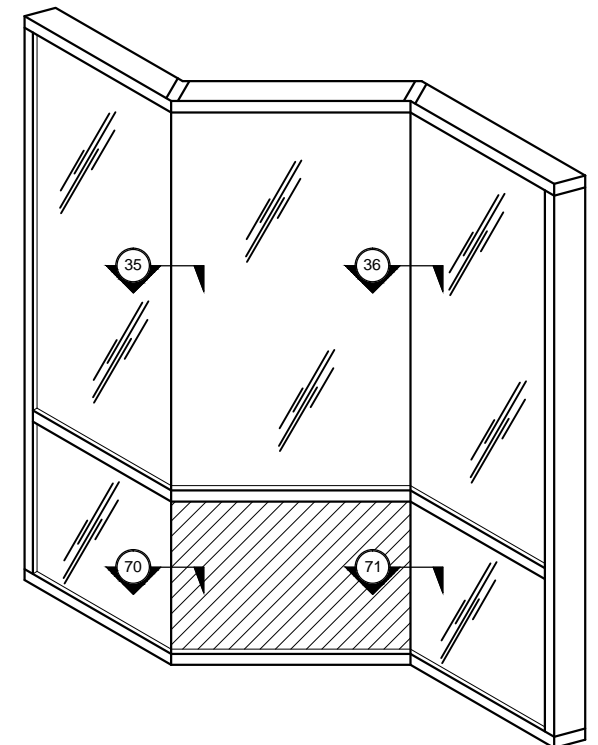
SCALE: 3/4" = 1'-0"



TYPICAL BG600 WINDOW WALL PLAN 'D'

6" DEEP / DOUBLE GLAZED - SINGLE  
GLAZED SYSTEM

SCALE: 3/4" = 1'-0"



BG600 135 DEGREE CORNER ELEVATION

6" DEEP / DOUBLE GLAZED -  
SINGLE GLAZED SYSTEM

SCALE: 3/4" = 1'-0"

STANDARD ABBREVIATIONS	
RO	ROUGH OPENING
FD	FRAME DIMENSION
DLO	DAYLIGHT OPENING
DO	DOOR OPENING
DD	DOOR DIMENSION
SMC	SURFACE MOUNTED CLOSER
OHCC	OVERHEAD CONCEALED CLOSER

WINDOW WALL SERIES BG600 TYPICAL ELEVATIONS

6" DEEP SYSTEM

Description:

U.S. ALUMINUM  
WINDOW WALL - BG  
SERIES BG600  
SYSTEM DRAWINGS

Drawn By: RPD

Date: 03/23/15

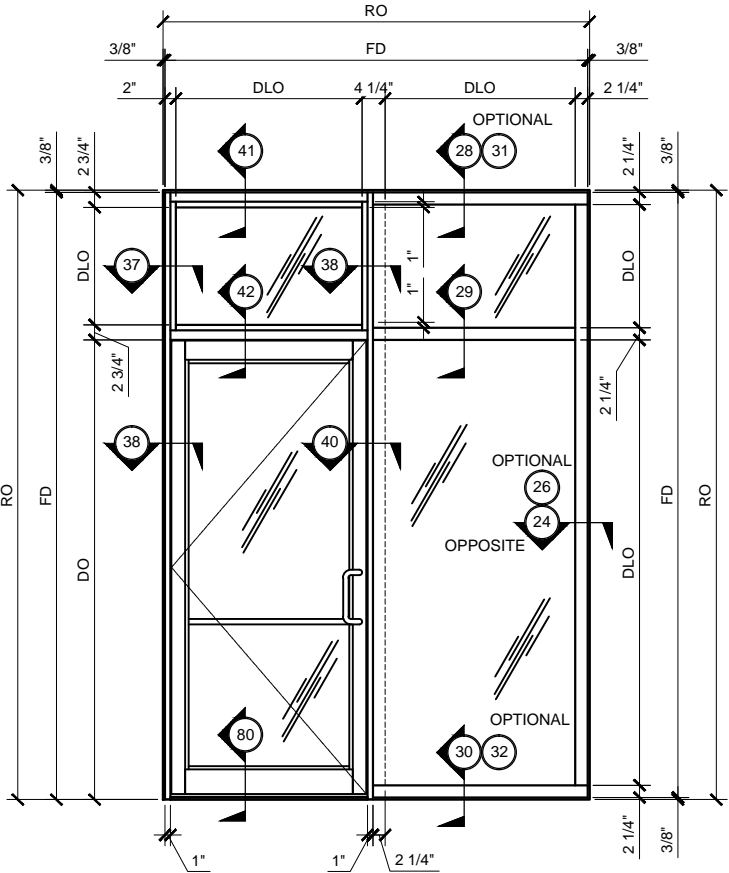
Scale: AS NOTED

File Name: BG600.dwg

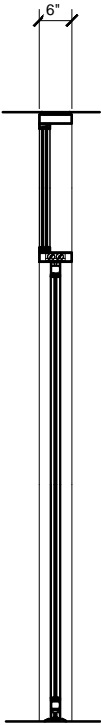
Sheet

4.01b

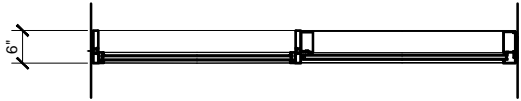
U.S. ALUMINUM WINDOW WALL SERIES BG600 SYSTEM



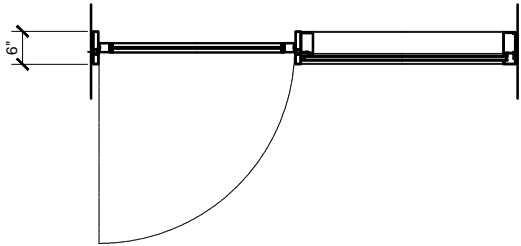
BG600 CENTER-HUNG DOOR ELEVATION  
6" DEEP / DOUBLE GLAZED SYSTEM      SCALE: 3/4" = 1'-0"



SECTION  
SCALE: 3/4" = 1'-0"

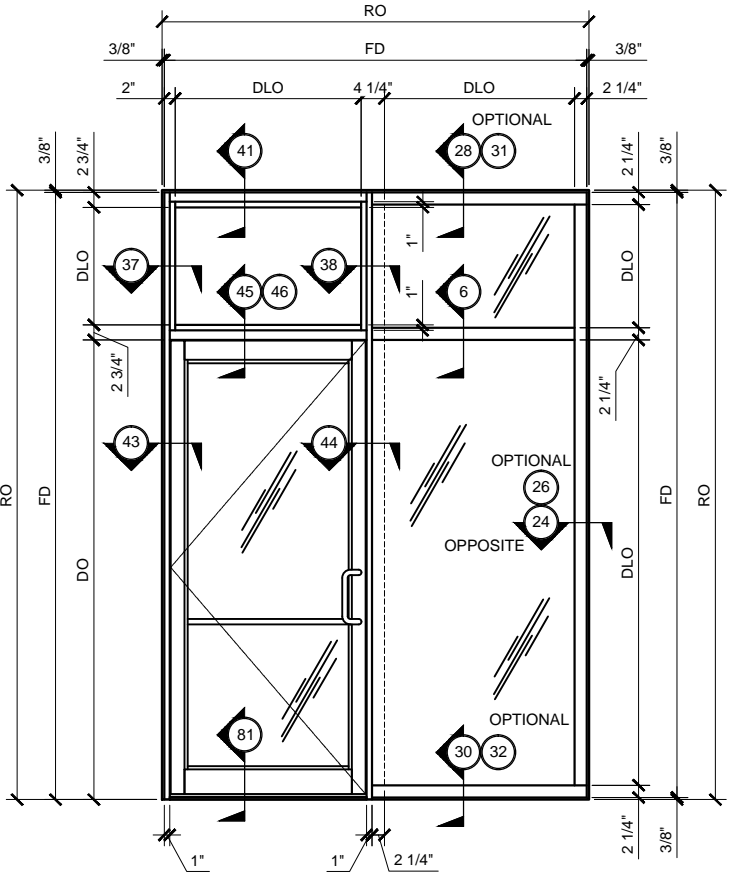


BG600 TRANSOM ABOVE DOOR PLAN  
6" DEEP / DOUBLE GLAZED SYSTEM      SCALE: 3/4" = 1'-0"

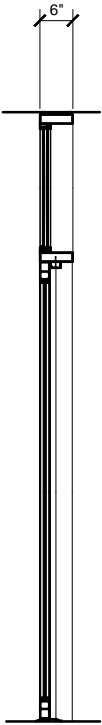


BG600 CENTER-HUNG DOOR PLAN  
6" DEEP / DOUBLE GLAZED SYSTEM      SCALE: 3/4" = 1'-0"

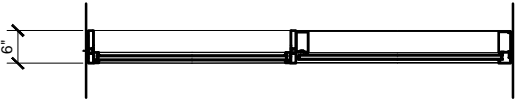
STANDARD ABBREVIATIONS	
RO	ROUGH OPENING
FD	FRAME DIMENSION
DLO	DAYLIGHT OPENING
DO	DOOR OPENING
DD	DOOR DIMENSION
SMC	SURFACE MOUNTED CLOSER
OHCC	OVERHEAD CONCEALED CLOSER



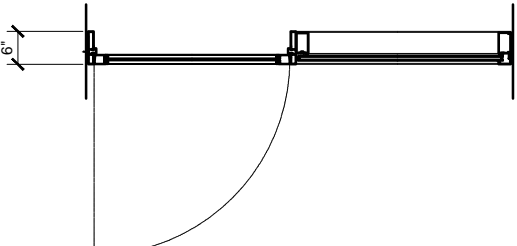
BG600 OFFSET-HUNG DOOR ELEVATION  
6" DEEP / DOUBLE GLAZED SYSTEM      SCALE: 3/4" = 1'-0"



SECTION  
SCALE: 3/4" = 1'-0"



BG600 TRANSOM ABOVE DOOR PLAN  
6" DEEP / DOUBLE GLAZED SYSTEM      SCALE: 3/4" = 1'-0"

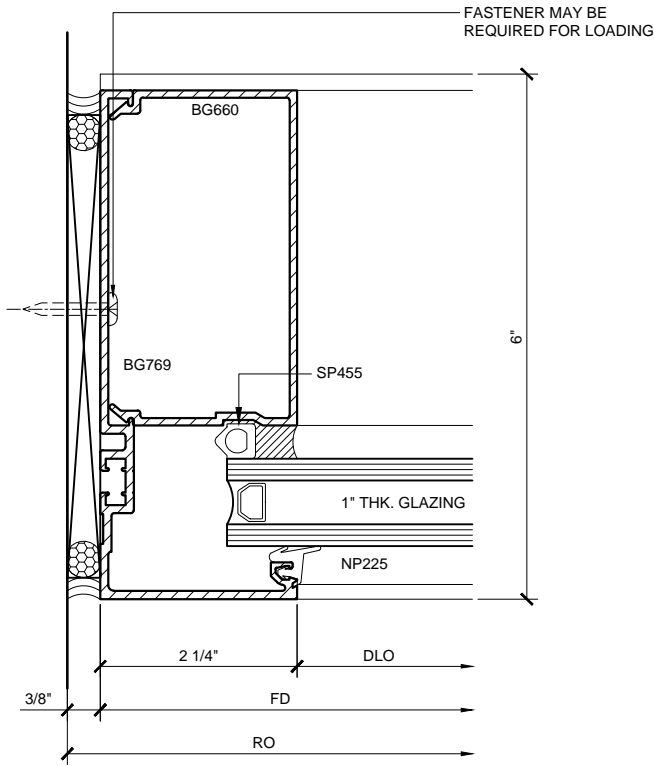


BG600 OFFSET-HUNG DOOR PLAN  
6" DEEP / DOUBLE GLAZED SYSTEM      SCALE: 3/4" = 1'-0"

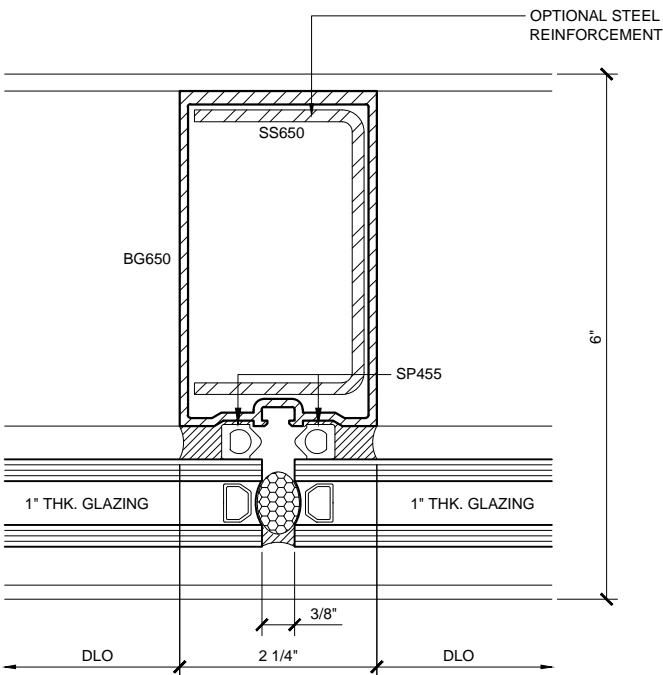
WINDOW WALL SERIES BG600 TYPICAL ELEVATIONS  
6" DEEP SYSTEM

Revisions By:

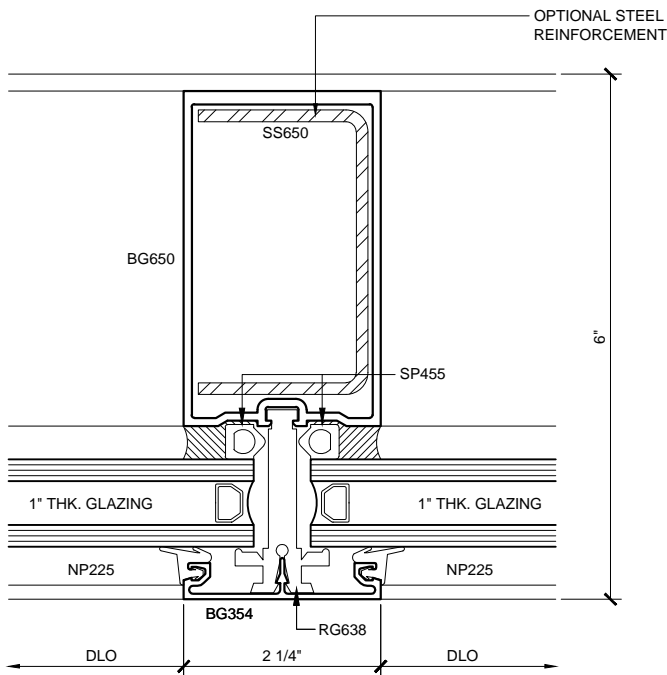
U.S. ALUMINUM WINDOW WALL SERIES BG600 SYSTEM



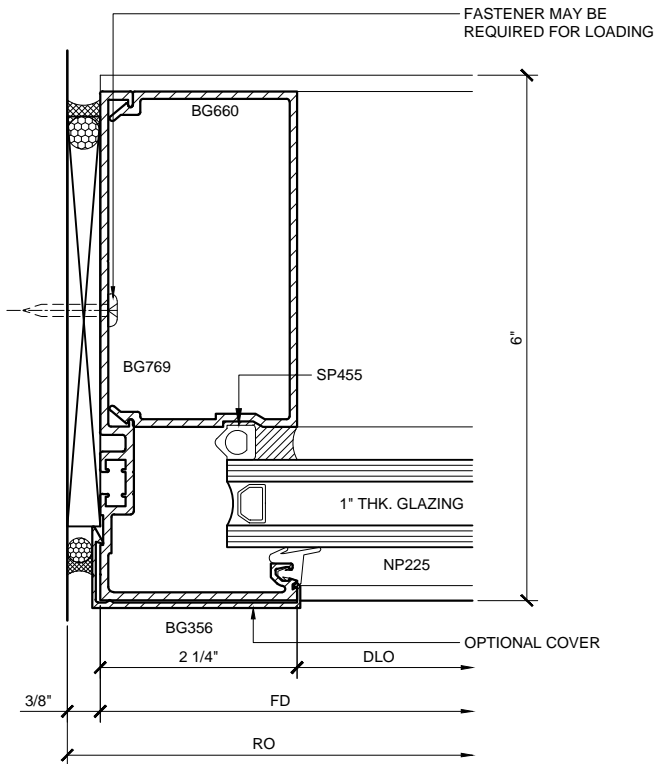
JAMB PLAN (24)  
BG600 DOUBLE GLAZED 1'-0"=1'-0"



INTERMEDIATE VERTICAL (25)  
BG600 DOUBLE GLAZED 1'-0"=1'-0"



INTERMEDIATE VERTICAL (27)  
BG600 DOUBLE GLAZED 1'-0"=1'-0"



JAMB PLAN w/ OPTIONAL FACE CAP (26)  
BG600 DOUBLE GLAZED 1'-0"=1'-0"

WINDOW WALL SERIES BG600 - 6" DEEP SYSTEM DETAILS

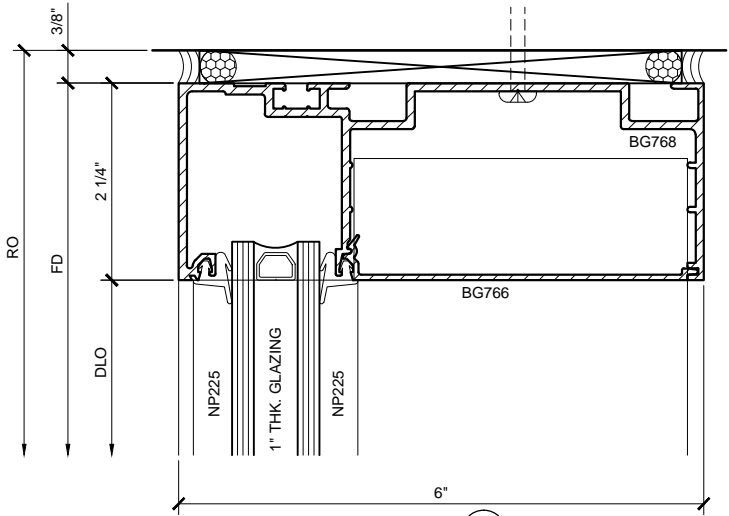
Revisions By:

**CAL**  
ALUMINUM  
C.R. LAURENCE CO. ARCHITECTURAL PRODUCTS  
2533 E. Vernon Avenue, Los Angeles, CA 90058-1897  
PH: (800) 421-6144 FAX: (800) 587-7201 www.crlaurence.com

Discription:  
U.S. ALUMINUM  
WINDOW WALL - BG  
SERIES BG600  
SYSTEM DRAWINGS

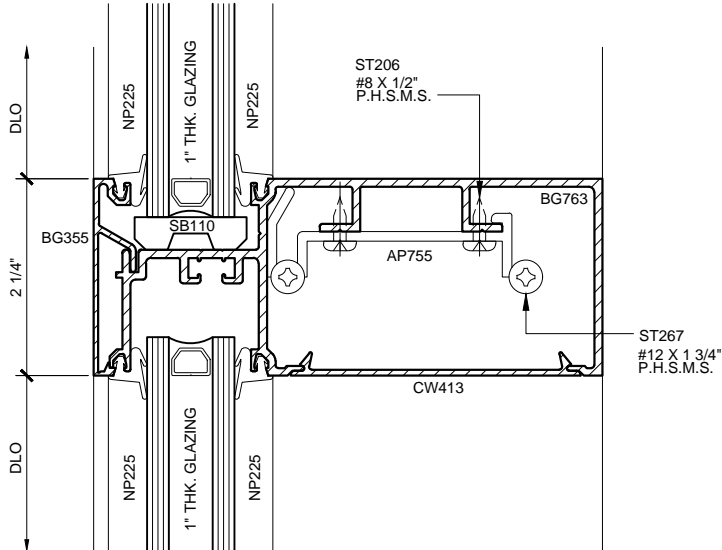
Drawn By: RPD  
Date: 03/23/15  
Scale: AS NOTED  
File Name: BG600.dwg  
Sheet

U.S. ALUMINUM WINDOW WALL SERIES BG600 SYSTEM



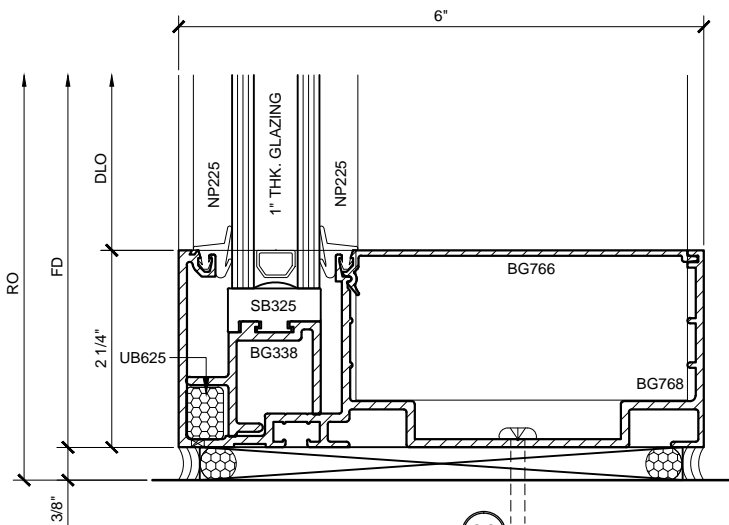
HEAD DETAIL (28)

BG600 DOUBLE GLAZED 1'-0"=1'-0"



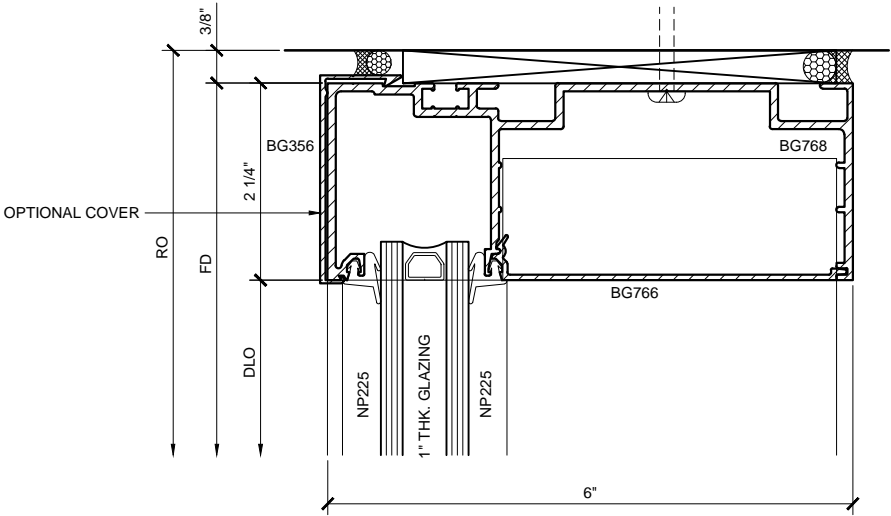
INTERMEDIATE HOR. DETAIL (29)

BG600 DOUBLE GLAZED 1'-0"=1'-0"



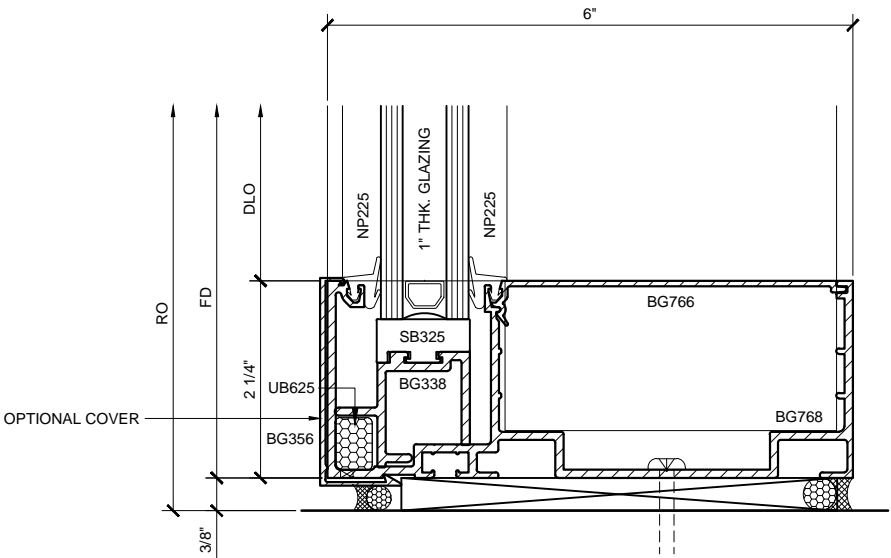
SILL DETAIL (30)

BG600 DOUBLE GLAZED 1'-0"=1'-0"



HEAD DETAIL w/ OPTIONAL FACE CAP (31)

BG600 DOUBLE GLAZED 1'-0"=1'-0"



SILL DETAIL w/ OPTIONAL FACE CAP (32)

BG600 DOUBLE GLAZED 1'-0"=1'-0"

WINDOW WALL SERIES BG600 - 6" DEEP SYSTEM DETAILS

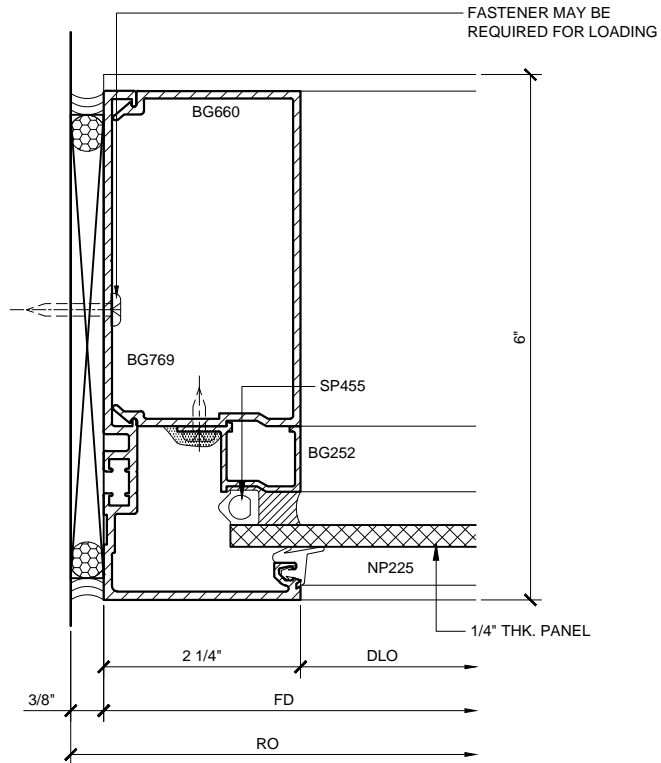
Revisions By:

**CAL** ALUMINUM  
C.R. LAURENCE CO. ARCHITECTURAL PRODUCTS  
2503 E. Vernon Avenue, Los Angeles, CA 90058-1897  
PH (800) 421-6144 FX (800) 587-7501 WWW: claluminum.com

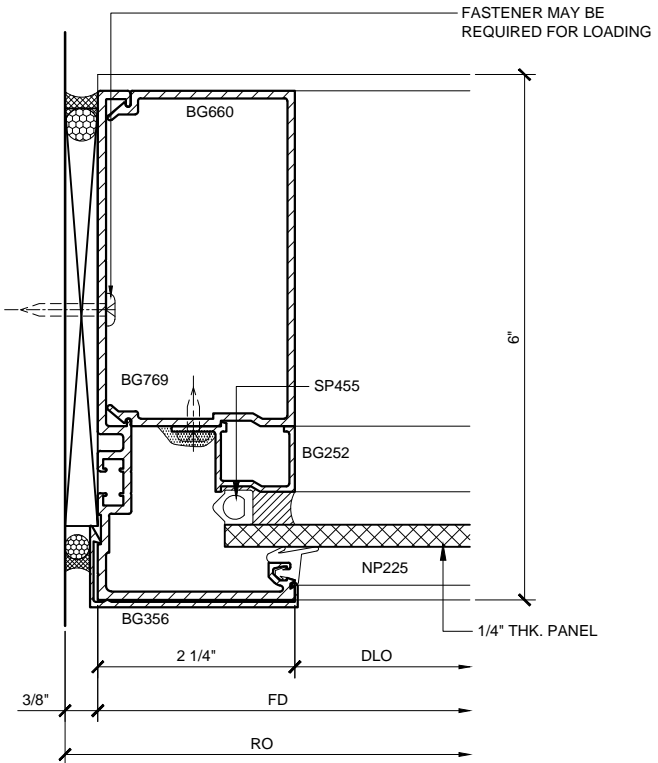
U.S. ALUMINUM  
WINDOW WALL - BG  
SERIES BG600  
SYSTEM DRAWINGS

Drawn By: RPD  
Date: 03/23/15  
Scale: AS NOTED  
File Name: BG600.dwg  
Sheet

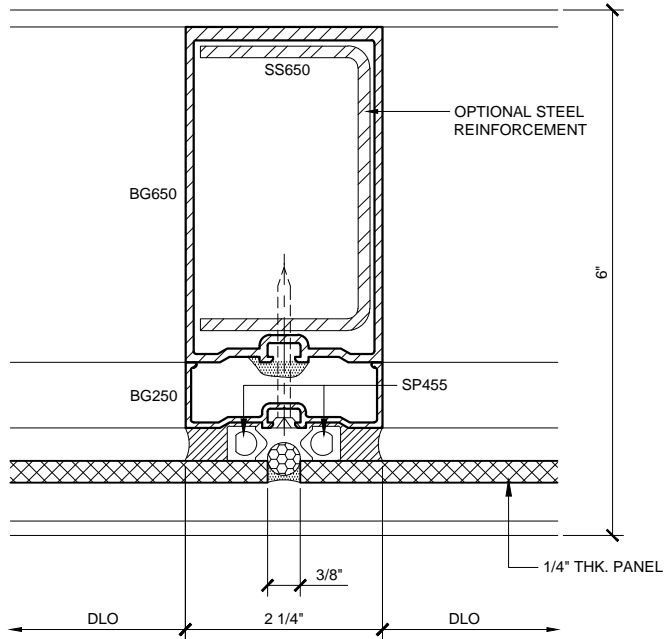
U.S. ALUMINUM WINDOW WALL SERIES BG600 SYSTEM



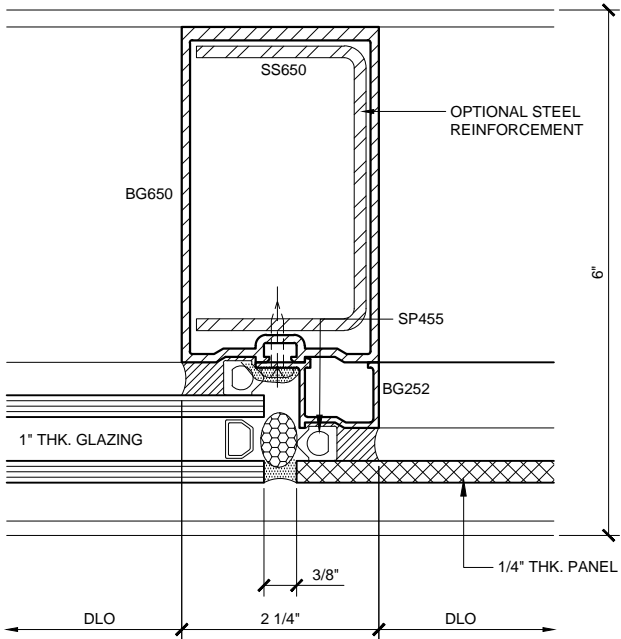
JAMB TRANSITION (54)  
BG600 SINGLE / DOUBLE GLAZED 1'-0"=1'-0"



JAMB TRANSITION w/ OPTIONAL FACE CAP (56)  
BG600 SINGLE / DOUBLE GLAZED 1'-0"=1'-0"



INTERMEDIATE VERT. TRANSITION (58)  
BG600 SINGLE / DOUBLE GLAZED 1'-0"=1'-0"



INTERMEDIATE VERT. TRANSITION (59)  
BG600 SINGLE / DOUBLE GLAZED 1'-0"=1'-0"

WINDOW WALL SERIES BG600 - 6" DEEP SYSTEM DETAILS

Revisions By:

**CAL** ALUMINUM  
C.R. LAURENCE CO. ARCHITECTURAL PRODUCTS  
2503 E. Vernon Avenue, Los Angeles, CA 90058-1897  
PH (800) 421-6144 FX (800) 587-7201 www.crlaurence.com

U.S. ALUMINUM  
WINDOW WALL - BG  
SERIES BG600  
SYSTEM DRAWINGS

Drawn By: RPD  
Date: 03/23/15  
Scale: AS NOTED  
File Name: BG600.dwg  
Sheet



Technical drawing of a door cross-section. The drawing shows the internal structure of the door, including the door frame, door panel, and various components like the door handle, lock, and door stop. The drawing is labeled with dimensions and component names.

Dimensions:

- Overall height: 38"
- Door frame height: 2 1/4"
- Door panel height: 2 1/4"
- Door panel width: 6"

Component labels:

- NP225 (Door panel)
- BG767 (Door frame)
- BG768 (Door frame)
- 1/4" THK PANEL (Door panel)

Technical cross-section drawing of a window assembly. The drawing shows a vertical section with various components labeled. On the left, there are two vertical dimension lines, each labeled "DLO". Between them is a dimension of "2 1/4\"". The assembly includes several parts: "NP225" (multiple locations), "1\" THK. GLAZING", "BG355", "SB110", "ST206 #8 X 1/2\" P.H.S.M.S.", "BG763", "AP755", "ST267 #12 X 1 3/4\" P.H.S.M.S.", "CW413", "IS251", and "1/4\" THK PANEL". The drawing shows a complex arrangement of structural and glazing components.

Technical drawing of a door cross-section. The drawing shows the internal structure of the door, including the door frame, door leaf, and various components. Key dimensions and labels include:

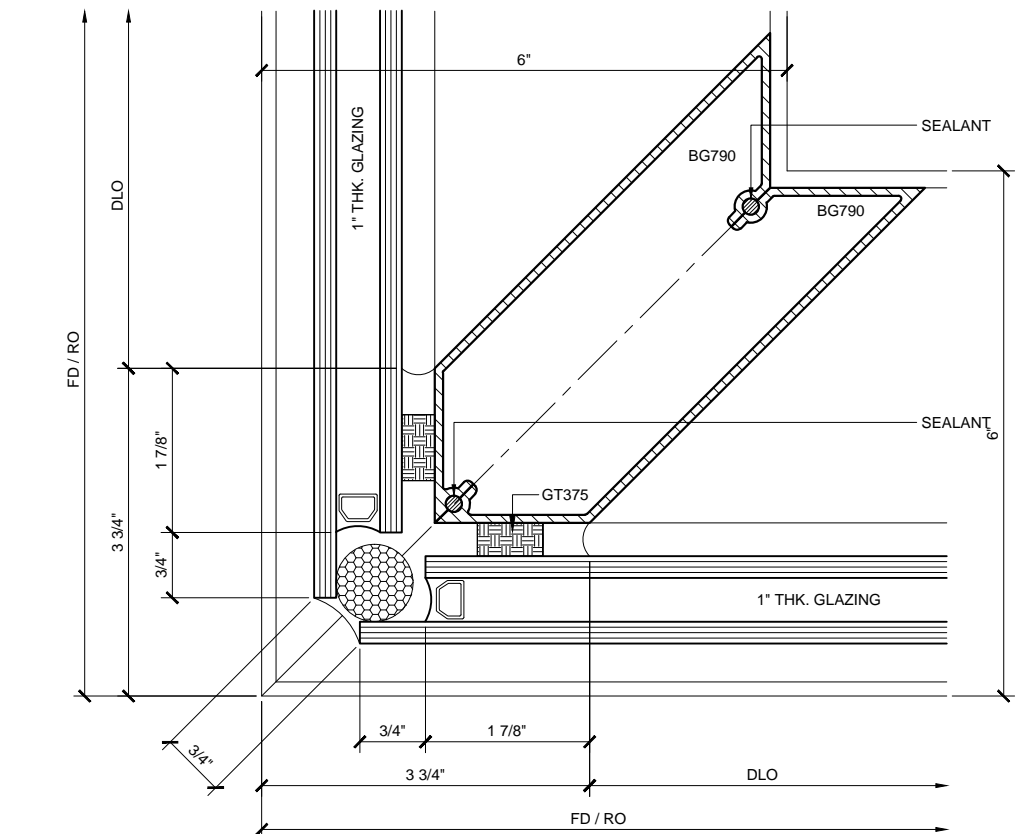
- Dimensions:**
  - Overall height: 38"
  - Door frame height: 2 1/4"
  - Door leaf height: 2 1/4"
  - Door frame width: 6"
- Labels:**
  - RO**: Rough Opening
  - FD**: Finished Door
  - DLO**: Door Leaf Opening
  - BG356**: Door frame component
  - BG768**: Door frame component
  - BG767**: Door frame component
  - NP225**: Door frame component
  - 1/4" THK PANEL**: Door leaf component

Technical drawing of a window cross-section showing various components and dimensions. The drawing includes the following labels and dimensions:

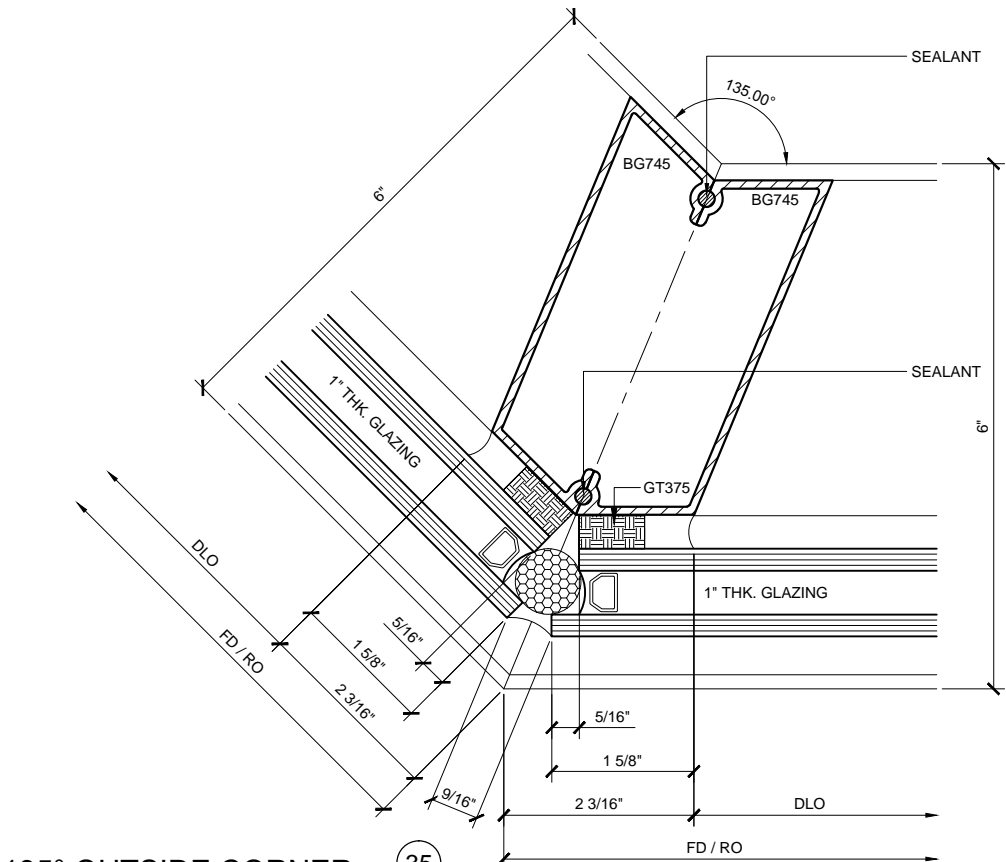
- Dimensions:**
  - 2" (width of the top section)
  - 2 1/4" (height of the middle section)
  - DLO (Dead Load Offset)
- Components:**
  - NP225 (North Panel 225)
  - 1/4" THK PANEL (1/4 inch thick panel)
  - IS251 (Insulation 251)
  - ST206 #8 X 1/2" P.H.S.M.S. (Structural Thermal Break 206 #8 X 1/2 inch P.H.S.M.S.)
  - BG355 (Bottom Gasket 355)
  - SB110 (Sill Block 110)
  - AP755 (Air Pressure 755)
  - BG763 (Bottom Gasket 763)
  - ST267 #12 X 1 3/4" P.H.S.M.S. (Structural Thermal Break 267 #12 X 1 3/4 inch P.H.S.M.S.)
  - CW413 (Center Window 413)
  - 1" THK. GLAZING (1 inch thick glazing)

## 4.05

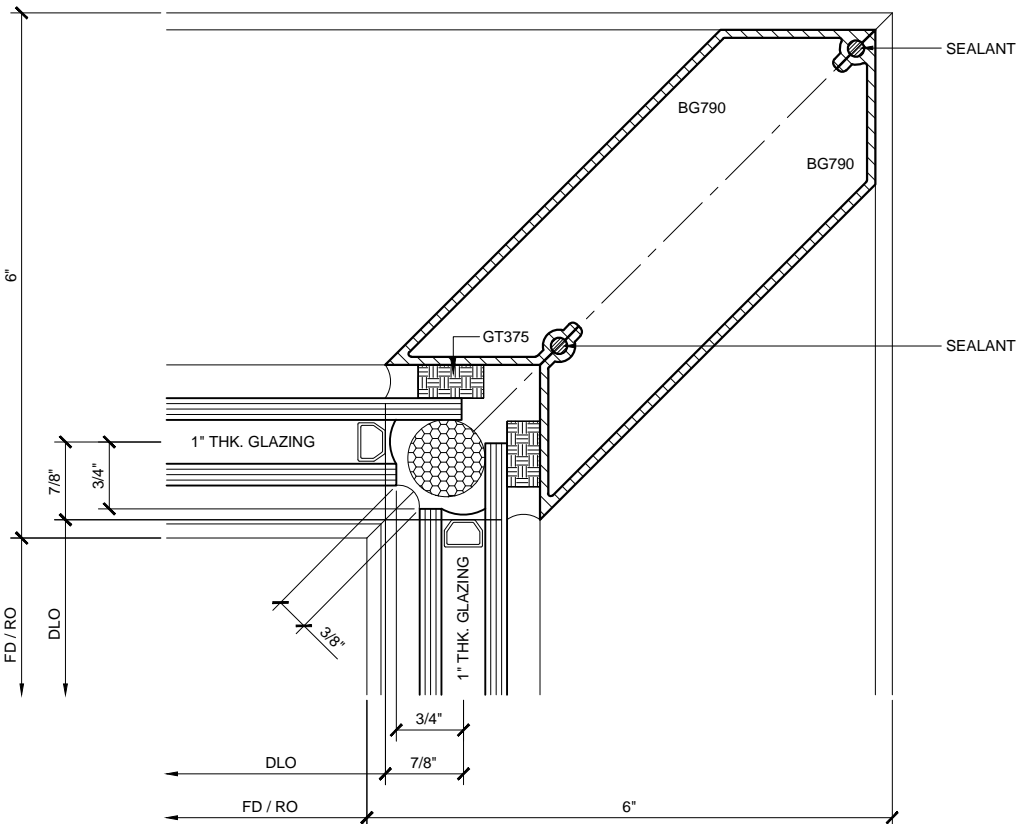
U.S. ALUMINUM WINDOW WALL SERIES BG600 SYSTEM



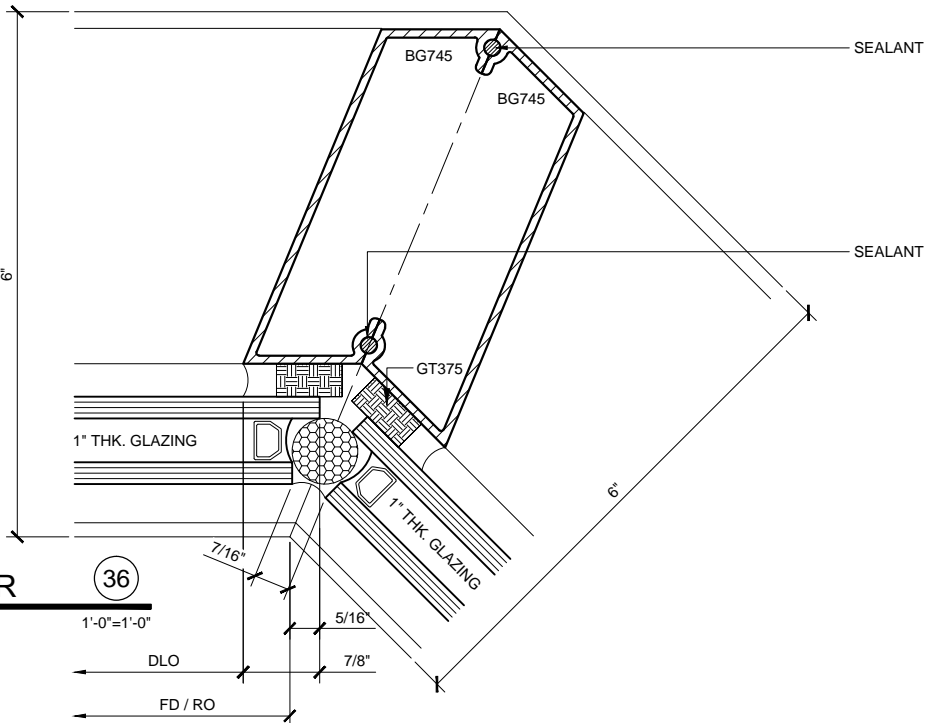
90° OUTSIDE CORNER (33)  
BG600 DOUBLE GLAZED 1'-0"=1'-0"



135° OUTSIDE CORNER (35)  
BG600 DOUBLE GLAZED 1'-0"=1'-0"



90° INSIDE CORNER (34)  
BG600 DOUBLE GLAZED 1'-0"=1'-0"



135° INSIDE CORNER (36)  
BG600 DOUBLE GLAZED 1'-0"=1'-0"

WINDOW WALL SERIES BG600 - 6" DEEP SYSTEM DETAILS

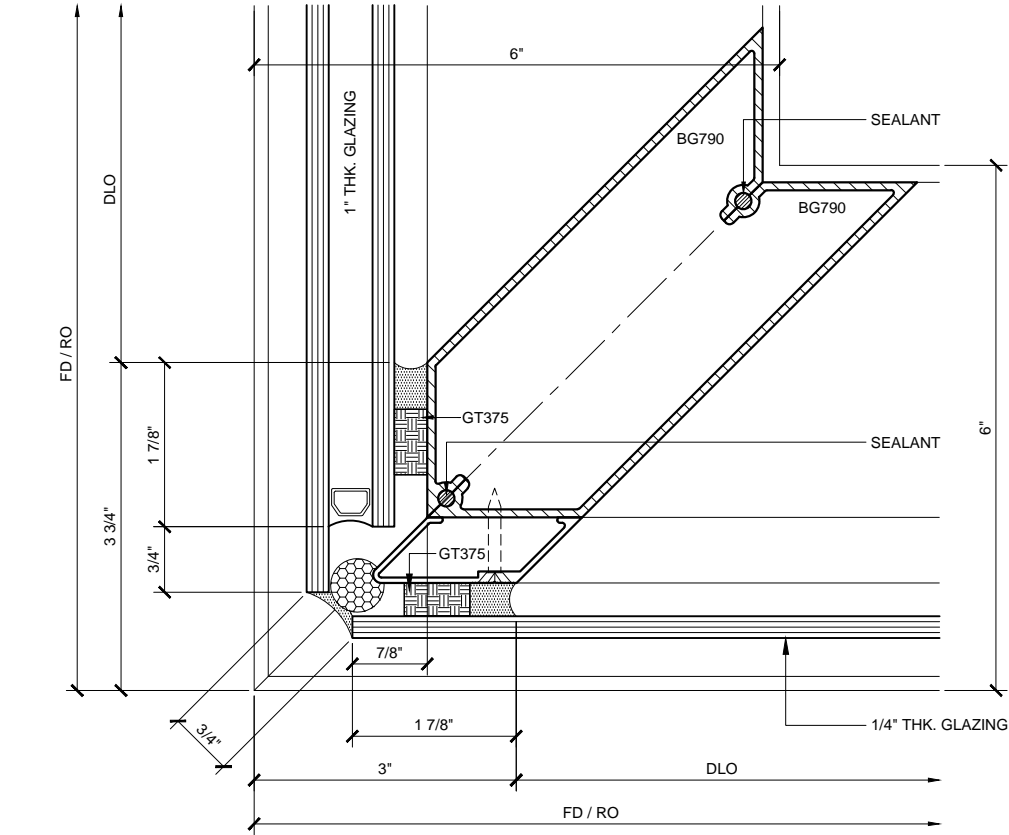
Revisions By:



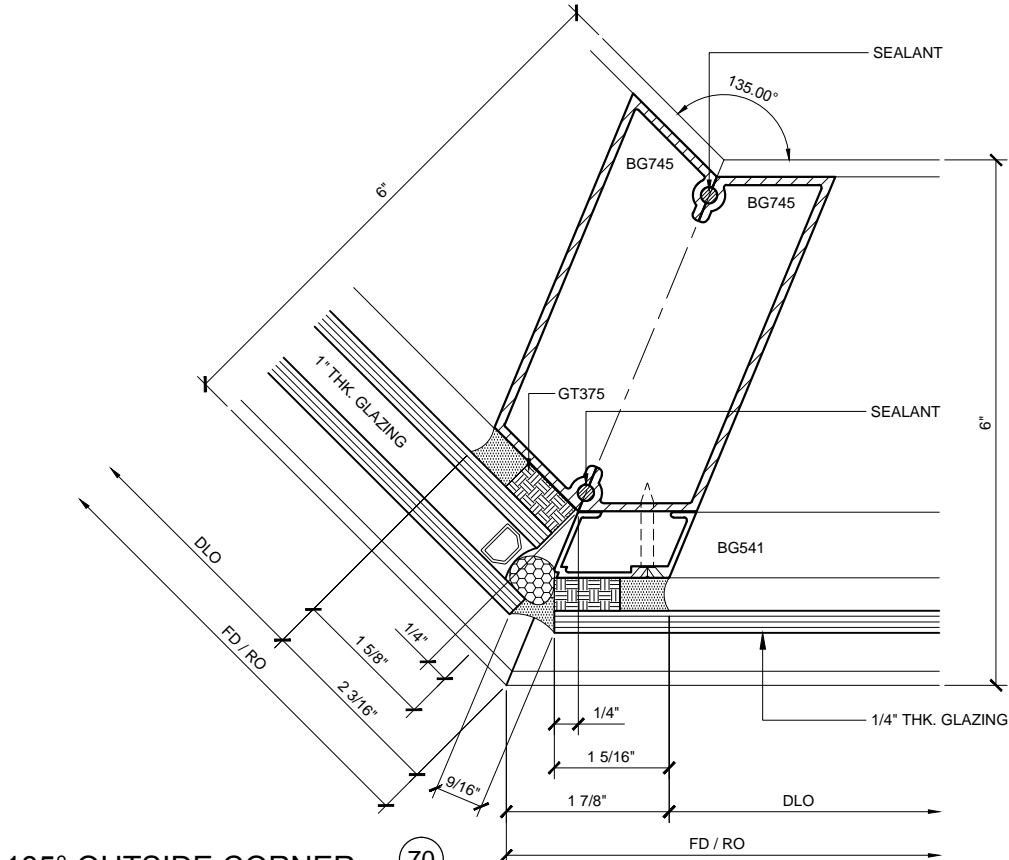
U.S. ALUMINUM  
WINDOW WALL - BG  
SERIES BG600  
SYSTEM DRAWINGS

Drawn By: RPD  
Date: 03/23/15  
Scale: AS NOTED  
File Name: BG600.dwg  
Sheet

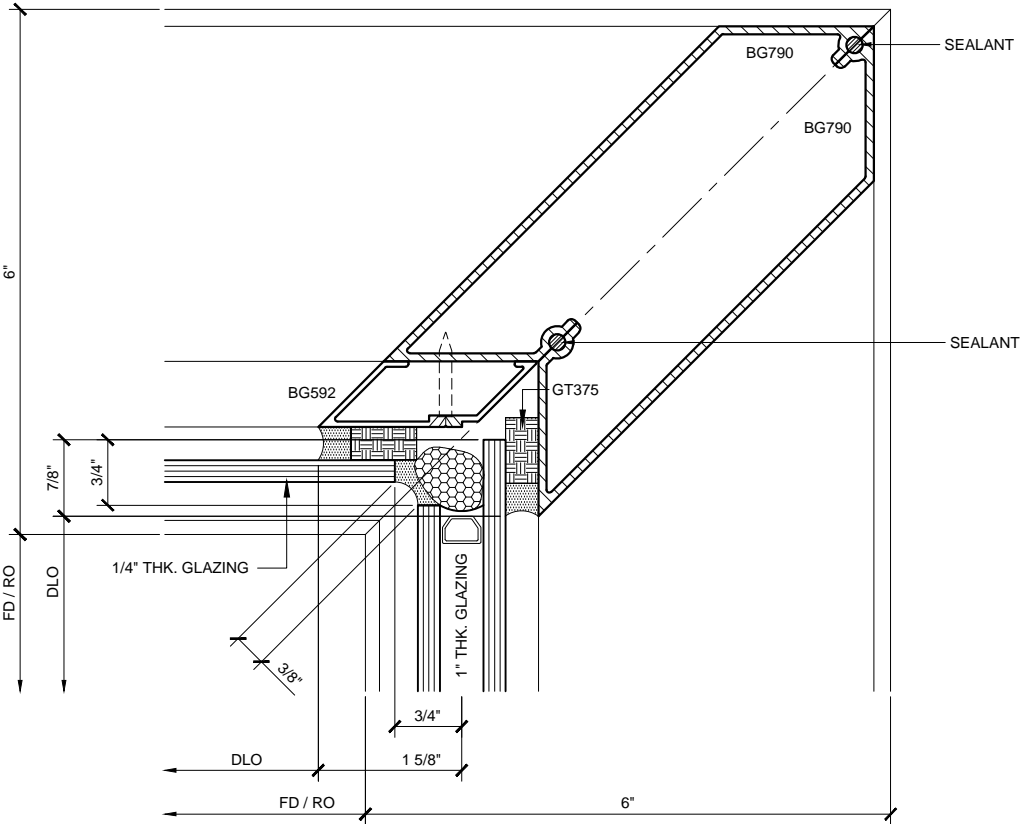
U.S. ALUMINUM WINDOW WALL SERIES BG600 SYSTEM



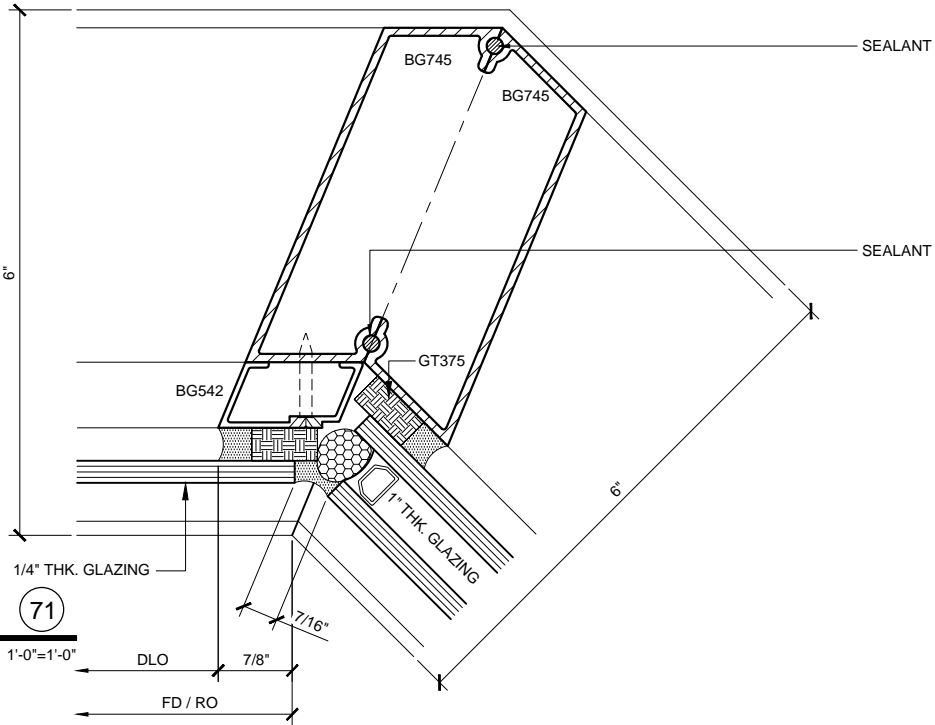
90° OUTSIDE CORNER (68)  
BG600 COMBINATION DOUBLE / SINGLE GLAZED 1'-0"=1'-0"



135° OUTSIDE CORNER (70)  
BG600 COMBINATION DOUBLE / SINGLE GLAZED 1'-0"=1'-0"



90° INSIDE CORNER (69)  
BG600 COMBINATION DOUBLE / SINGLE GLAZED 1'-0"=1'-0"



135° INSIDE CORNER (71)  
BG600 COMBINATION DOUBLE / SINGLE GLAZED 1'-0"=1'-0"

WINDOW WALL SERIES BG600 - 6" DEEP SYSTEM DETAILS

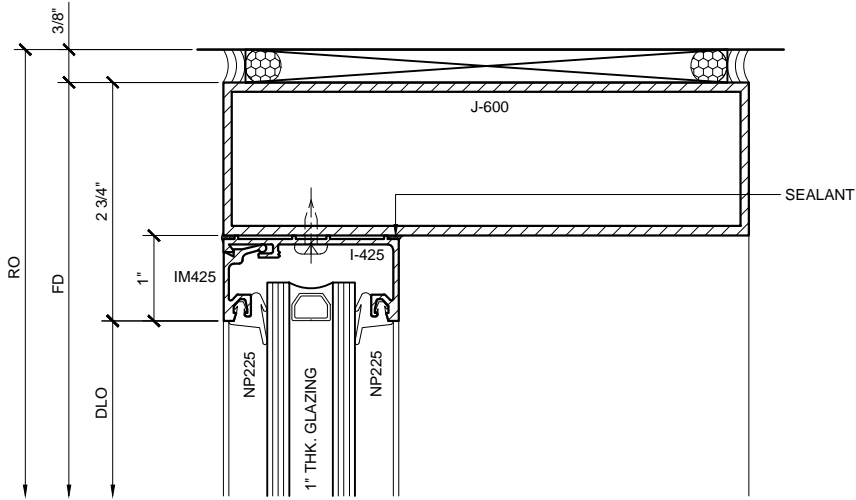
Revisions By:

**CAL**  
ALUMINUM  
C.R. LAURENCE CO. ARCHITECTURAL PRODUCTS  
2533 E. Vernon Avenue, Los Angeles, CA 90058-1897  
PH (800) 421-6144 FAX (800) 587-7201 www.crlaurence.com

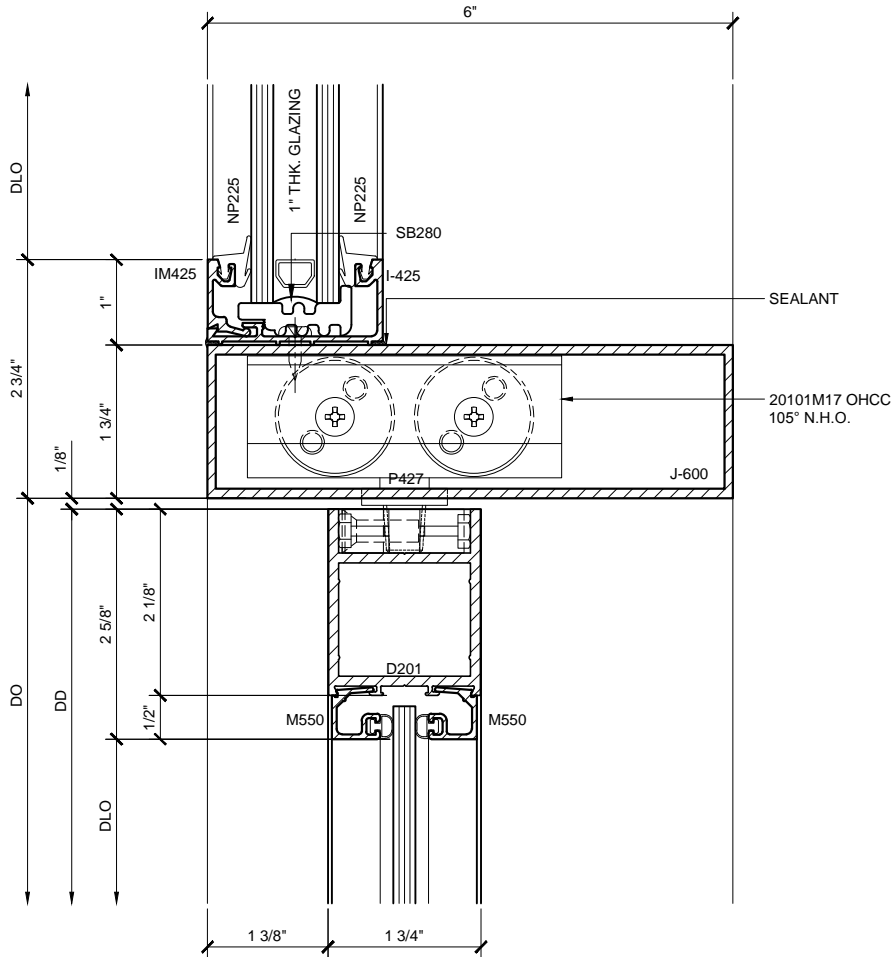
U.S. ALUMINUM  
WINDOW WALL - BG  
SERIES BG600  
SYSTEM DRAWINGS

Drawn By: RPD  
Date: 03/23/15  
Scale: AS NOTED  
File Name: BG600.dwg  
Sheet

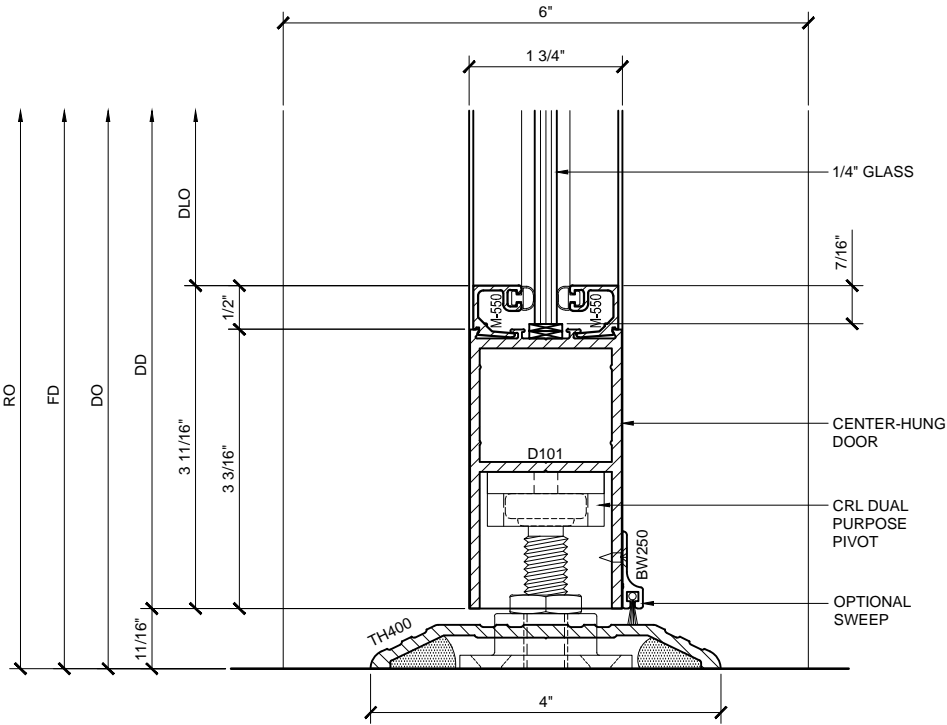
U.S. ALUMINUM WINDOW WALL SERIES BG600 SYSTEM



TRANSOM HEAD DETAIL (41)  
BG600 DOUBLE GLAZED  
1'-0"=1'-0"



DOOR HEAD DETAIL (42)  
BG600 DOUBLE GLAZED  
CENTER-HUNG DOOR  
1'-0"=1'-0"



DOOR SILL DETAIL (80)  
BG600 DOUBLE GLAZED  
CENTER-HUNG DOOR  
1'-0"=1'-0"

WINDOW WALL SERIES BG600 - 6" DEEP SYSTEM DETAILS

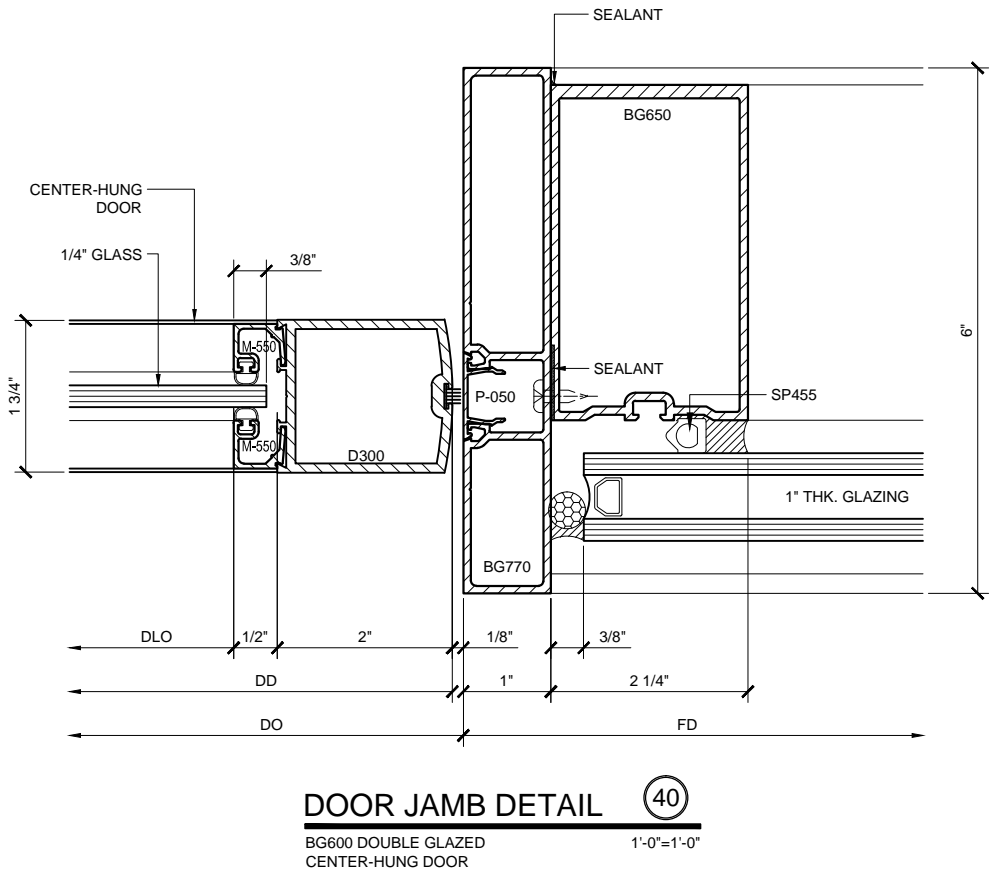
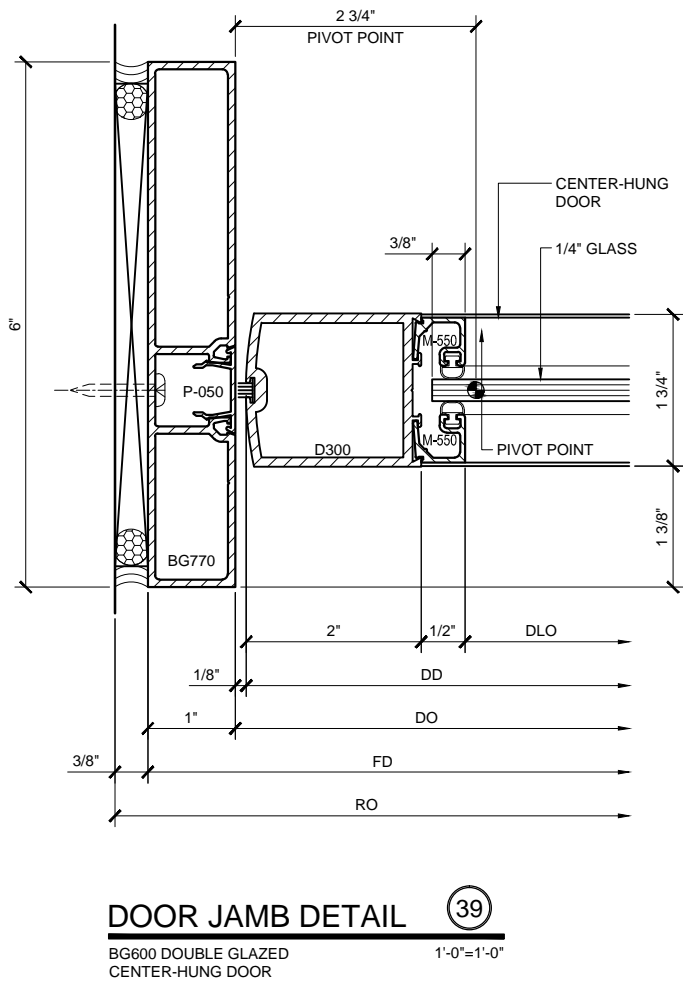
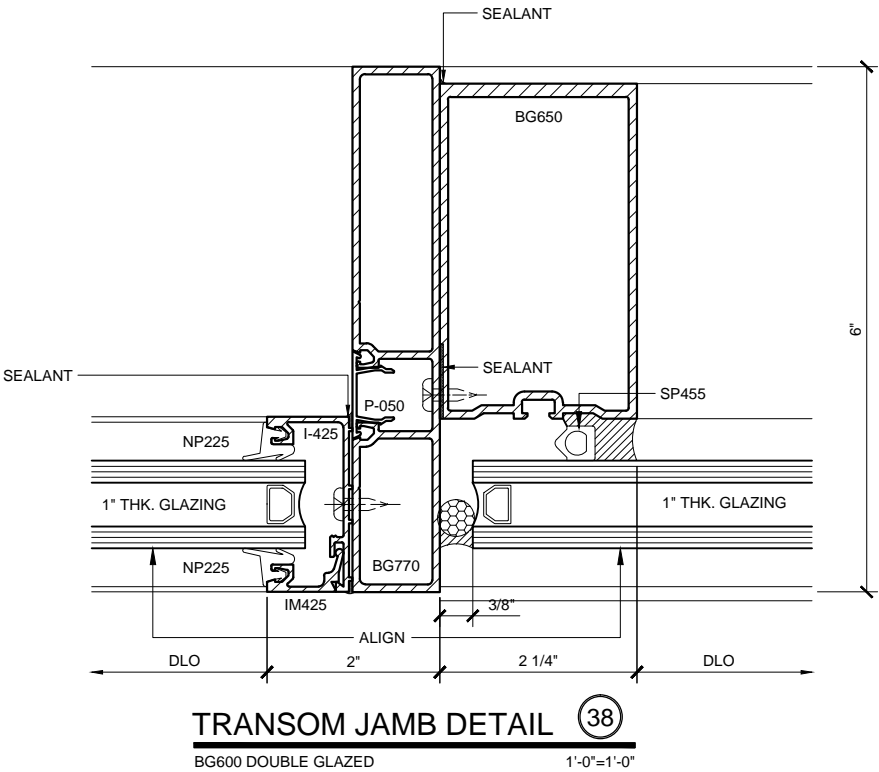
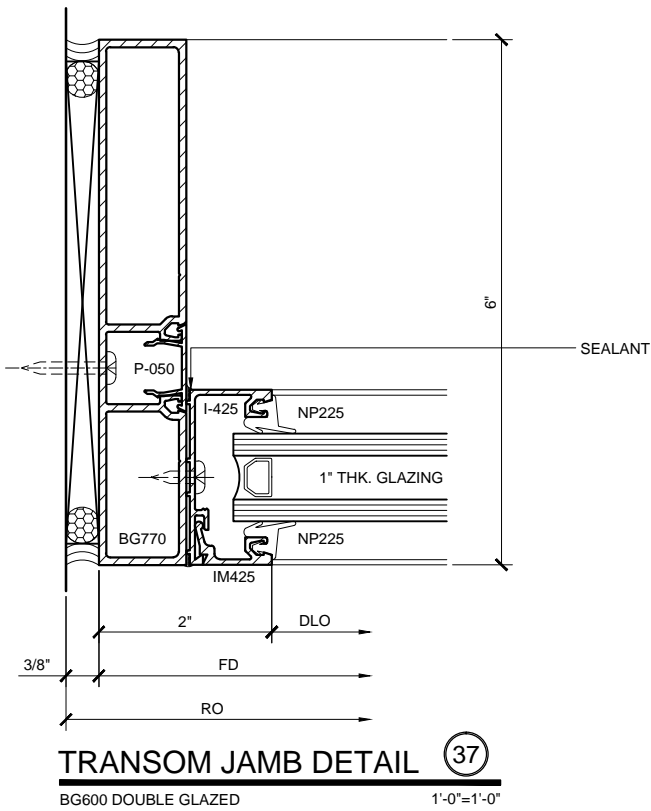
Revisions By:



U.S. ALUMINUM  
WINDOW WALL - BG  
SERIES BG600  
SYSTEM DRAWINGS

Drawn By: RPD  
Date: 03/23/15  
Scale: AS NOTED  
File Name: BG600.dwg  
Sheet

U.S. ALUMINUM WINDOW WALL SERIES BG600 SYSTEM



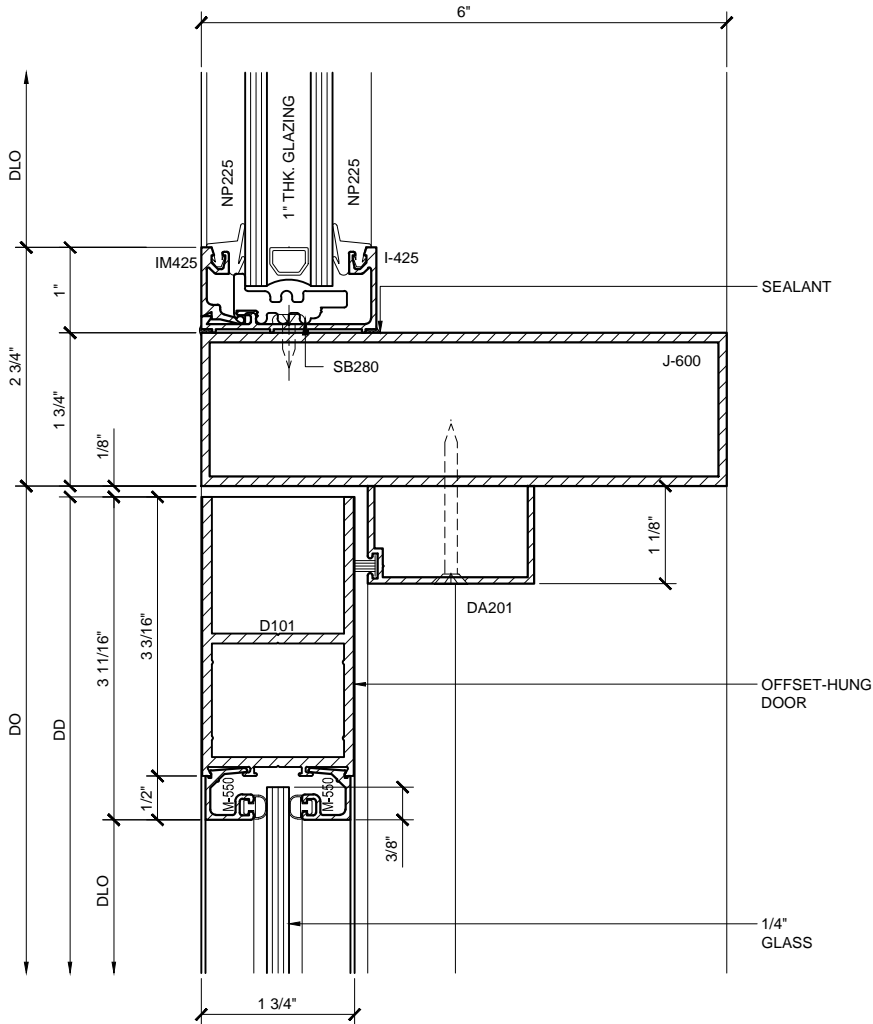
WINDOW WALL SERIES BG600 - 6" DEEP SYSTEM DETAILS

Revisions By:

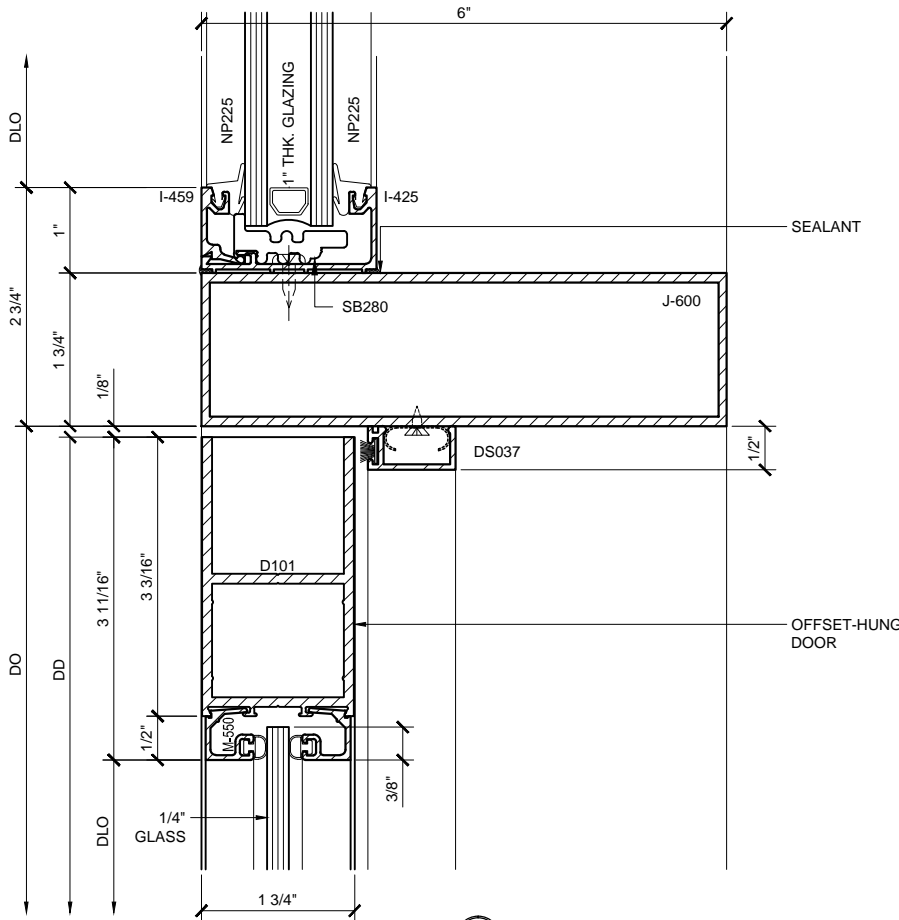
**CAL** ALUMINUM  
C.R. LAURENCE CO. ARCHITECTURAL PRODUCTS  
2503 E. Vernon Avenue, Los Angeles, CA 90058-1897  
PH (800) 421-6144 FAX (800) 587-7201 www.crlaurence.com

Description:  
U.S. ALUMINUM  
WINDOW WALL - BG  
SERIES BG600  
SYSTEM DRAWINGS

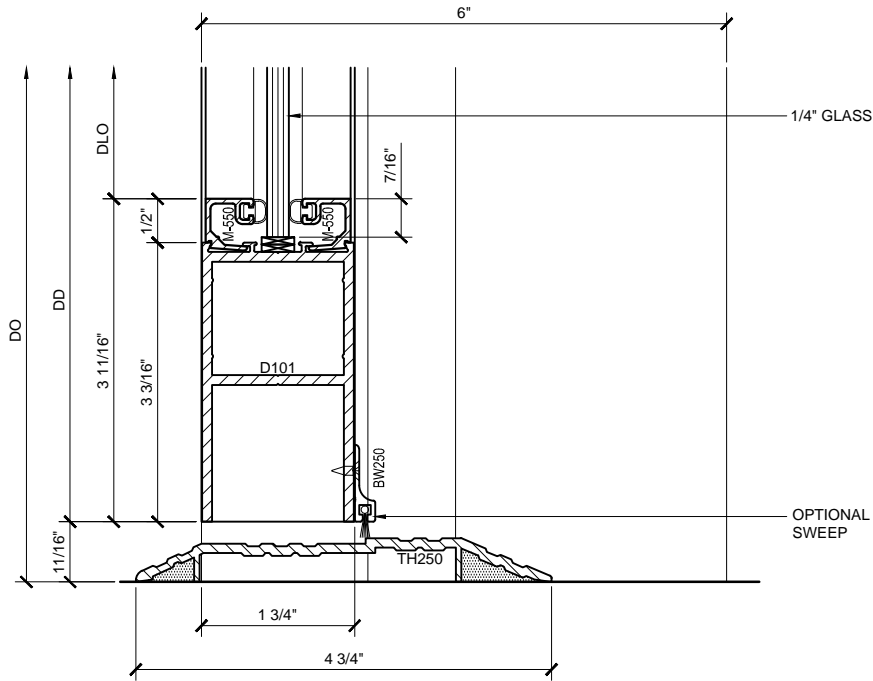
Drawn By: RPD  
Date: 03/23/15  
Scale: AS NOTED  
File Name: BG600.dwg  
Sheet



DOOR HEAD DETAIL 45  
BG600 DOUBLE GLAZED  
OFFSET-HUNG DOOR  
1'-0"=1'-0"



DOOR HEAD DETAIL 46  
BG600 DOUBLE GLAZED  
OFFSET-HUNG DOOR  
1'-0"=1'-0"



DOOR SILL DETAIL 81  
BG600 DOUBLE GLAZED  
OFFSET-HUNG DOOR  
1'-0"=1'-0"

WINDOW WALL SERIES BG600 - 6" DEEP SYSTEM DETAILS

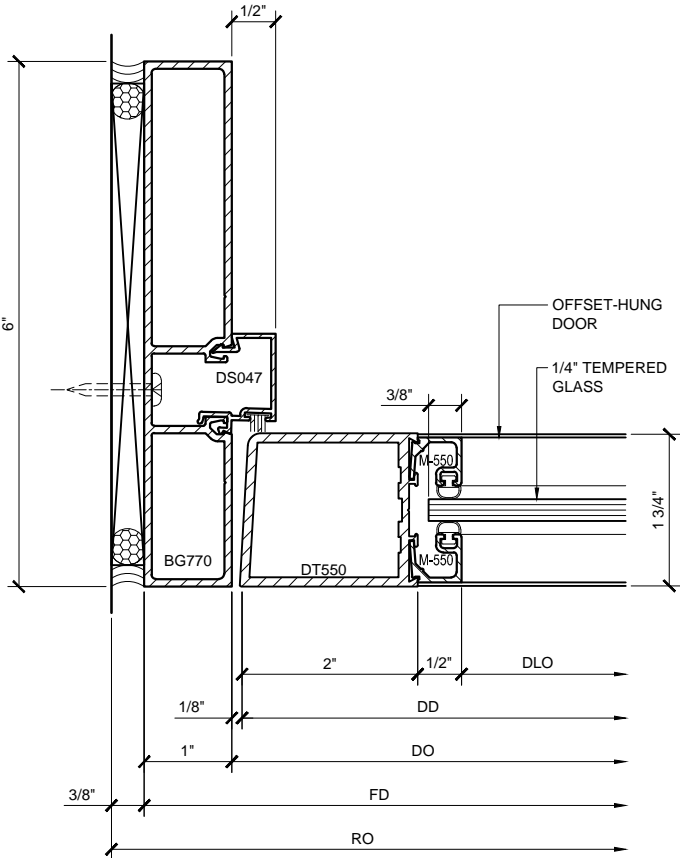
Revisions By:

**CAL** ALUMINUM  
C.R. LAURENCE CO. ARCHITECTURAL PRODUCTS  
2533 E. Vernon Avenue, Los Angeles, CA 90058-1897  
PH (800) 421-6144 FX (800) 587-7201 www.crlaurence.com

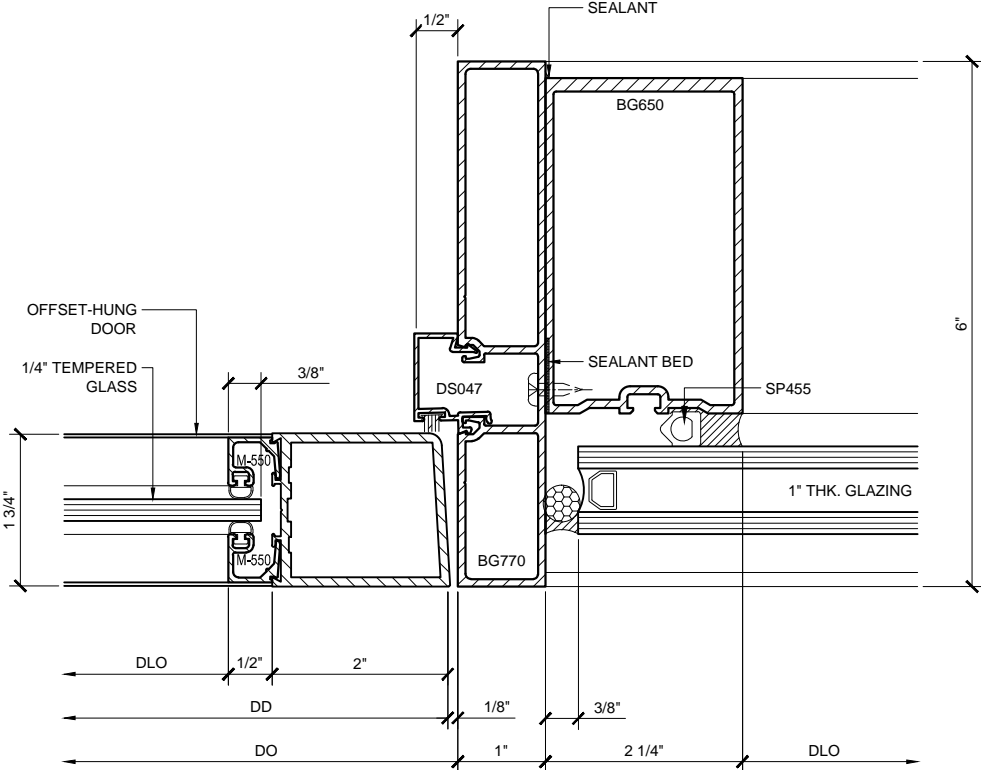
Description:

U.S. ALUMINUM  
WINDOW WALL - BG  
SERIES BG600  
SYSTEM DRAWINGS

Drawn By: RPD  
Date: 03/23/15  
Scale: AS NOTED  
File Name: BG600.dwg  
Sheet



DOOR JAMB DETAIL 43  
BG600 DOUBLE GLAZED  
OFFSET-HUNG DOOR  
1'-0"=1'-0"



DOOR JAMB DETAIL 44  
BG600 DOUBLE GLAZED  
OFFSET-HUNG DOOR  
1'-0"=1'-0"

WINDOW WALL SERIES BG600 - 6" DEEP SYSTEM DETAILS

Revisions By:

**CAL**  
**ALUMINUM**  
C.R. LAURENCE CO. ARCHITECTURAL PRODUCTS  
2503 E. Vernon Avenue, Los Angeles, CA 90058-1897  
PH (800) 421-6144 FX (800) 587-7201 WWW.CRLAURENCE.COM

U.S. ALUMINUM  
WINDOW WALL - BG  
SERIES BG600  
SYSTEM DRAWINGS

Drawn By: RPD  
Date: 03/23/15  
Scale: AS NOTED  
File Name: BG600.dwg  
Sheet