

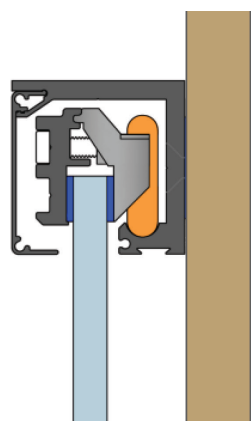


CRL SLIDING DOOR SYSTEMS

CATSDS_ZD_08_23_AVDB4346



SYSTEM ABOVE REQUIRES ADDITIONAL GSDTTG FITTINGS - PAGE 9



Cat. No.	Description	Size	Colour
GSD513MK1TB	GSD51 Kit	3000 mm	Brushed Aluminium
GSD513MK1TSA	GSD51 Kit	3000 mm	Satin Anodised
GSD513MK1TML	GSD51 Kit	3000 mm	Matt Black
GSD514MK1TB	GSD51 Double Door Bi Parting Kit	4000 mm	Brushed Aluminium
GSD514MK1TSA	GSD51 Double Door Bi Parting Kit	4000 mm	Satin Anodised
GSD514MK1TML	GSD51 Double Door Bi Parting Kit	4000 mm	Matt Black
GSD513MFPK1TB	GSD51 Kit with Fixed Panel	3000 mm	Brushed Aluminium
GSD513MFPK1TSA	GSD51 Kit with Fixed Panel	3000 mm	Satin Anodised
GSD513MFPK1TML	GSD51 Kit with Fixed Panel	3000 mm	Matt Black

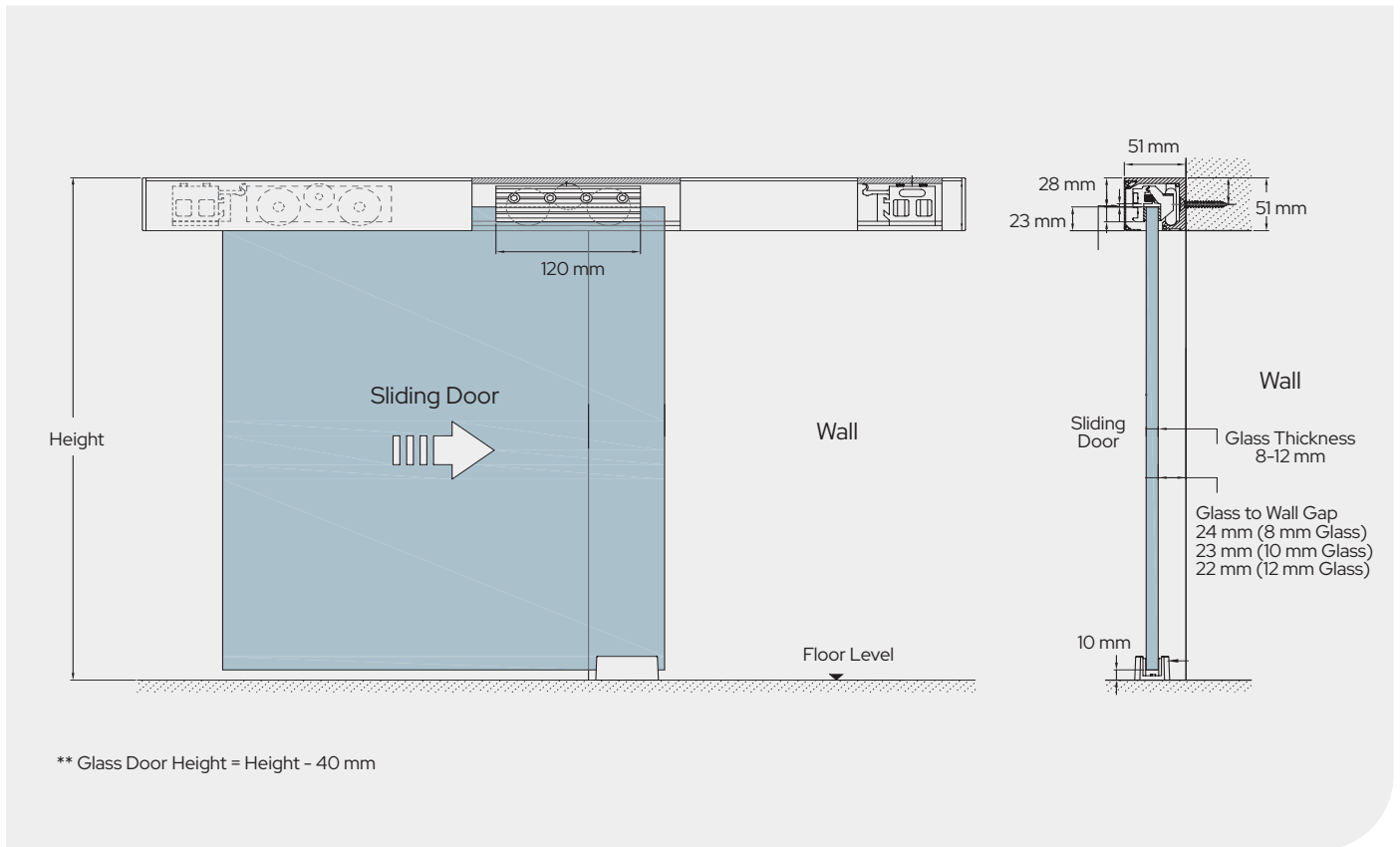
The GSD51 Slim-Line Sliding Door System is versatile in both construction and design. Its slim top rail is only 51 mm tall and comprises a single piece of extruded aluminium track with a clip-on cover and two end caps. Three independent rollers attached to the clamps offer a smooth rolling motion and prevent the clamp assembly from jumping off the track. A soft closing feature is available. See the GSD52 system.

The GSD51 can be wall mounted, or ceiling mounted. The robust clamp and roller system can support glass doors 8, 10, 12 & 13.52 mm thick weighing up to 120 kg.

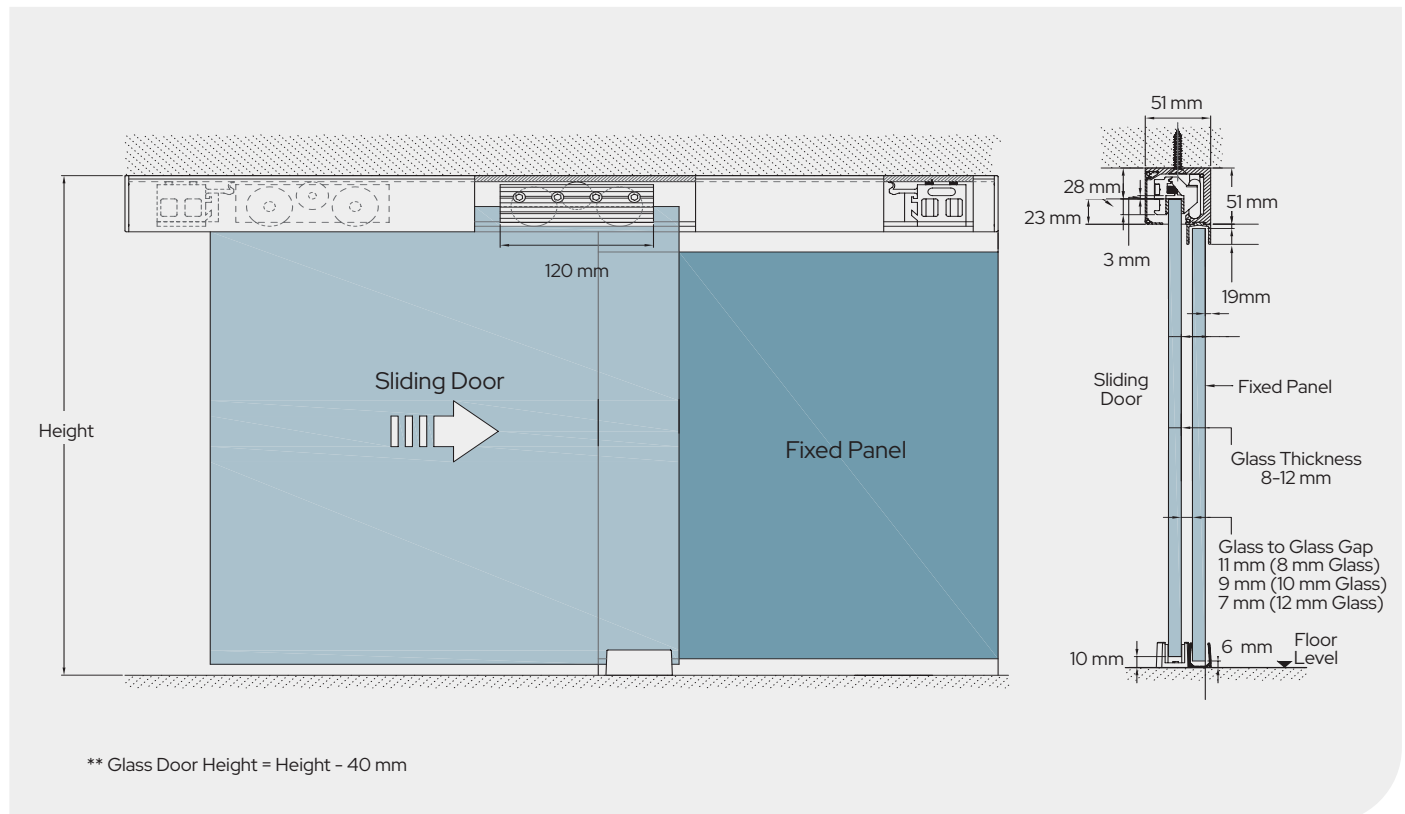
The GSD51 Slim-Line Sliding Door System is efficient and economical. Coupled with its slim sight line and no glass preparation required for the carriage rollers, the GSD51 is an ideal choice for every designer and installer.

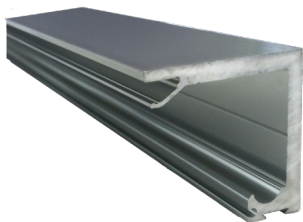
GSD51 Series | Slim-Line Sliding Door System

Wall Mounted



Ceiling Mount With Fixed Panel

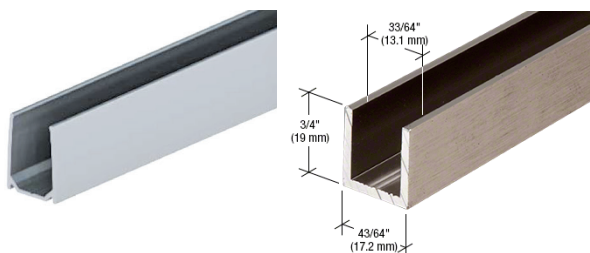




Cat. No.	Finish	Length
GSD51TR30SA	Satin Anodised	3000 mm
GSD51TR30B	Brushed Aluminium	3000 mm
GSD51TR30MBL	Matt Black	3000 mm
GSD51TR40SA	Satin Anodised	4000 mm
GSD51TR40B	Brushed Aluminium	4000 mm
GSD51TR40MBL	Matt Black	4000 mm



Cat. No.	Finish	Length
GSD51FC30SA	Satin Anodised	3000 mm
GSD51FC30B	Brushed Aluminium	3000 mm
GSD51FC30MBL	Matt Black	3000 mm
GSD51FC40SA	Satin Anodised	4000 mm
GSD51FC40B	Brushed Aluminium	4000 mm
GSD51FC40MBL	Matt Black	4000 mm



Cat. No.	Finish	Length
GSDBC30MBL	Matt Black	3000 mm
SDCD12A	Satin Anodised	2400 mm
SDCD12BN	Brushed Nickel	2400 mm
SDCD12MBL	Matt Black	2400 mm



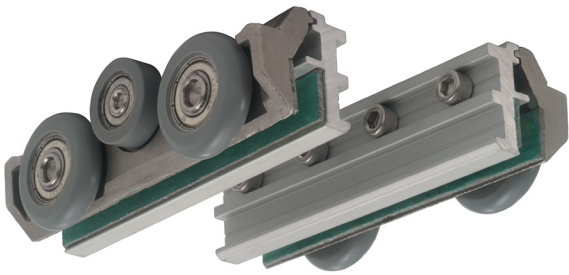
Cat. No.	Finish	Length
GSDTC30SA	Satin Anodised	3000 mm
GSDTC30B	Brushed Aluminium	3000 mm
GSDTC30MBL	Matt Black	3000 mm



Cat. No.	Finish	Length
GSD1FCPB	Brushed Aluminium	3000 mm
GSD1FCPSA	Satin Anodised	3000 mm



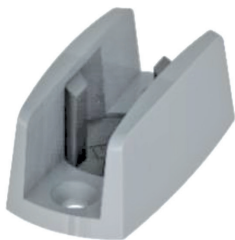
Cat. No.	Description
GSD51EC	Pair of GSD51 Top Track End Caps



Cat. No.	Description
GSD51CR3	Pair of GSD51 Carriages



Cat. No.	Description
GSD51ES	Pair of GSD51 Door Stoppers



Cat. No.	Finish
GSDFGSS	Brushed Stainless Steel
GSDFGSSMBL	Matt Black





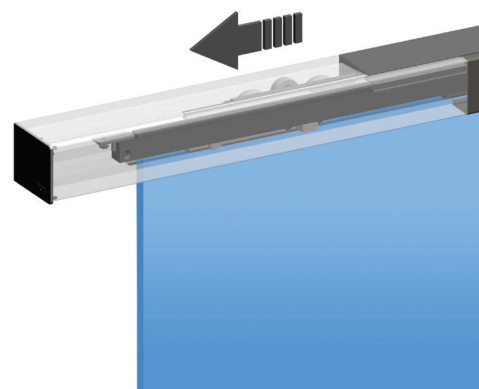
The GSD52 Slim-Line Sliding Door System is versatile in both construction and design. Its slim top rail is only 51 mm tall and comprises a single piece of extruded aluminium track with a clip-on cover and two end caps.

Both the track and cover are available in brushed aluminium, satin anodised and matt black finishes.

Three independent rollers attached to the clamps offer a smooth rolling motion and prevent the clamp assembly from jumping off the track. A hydraulic damper within the track acts as a soft-closing mechanism to prevent sliding door impact.

The GSD52 can be wall mounted or ceiling mounted. The robust clamping and roller system can support glass panels weighing up to 80 kg and is suited to 8 mm, 10 mm, 12 mm & 13.52 mm thick glass.

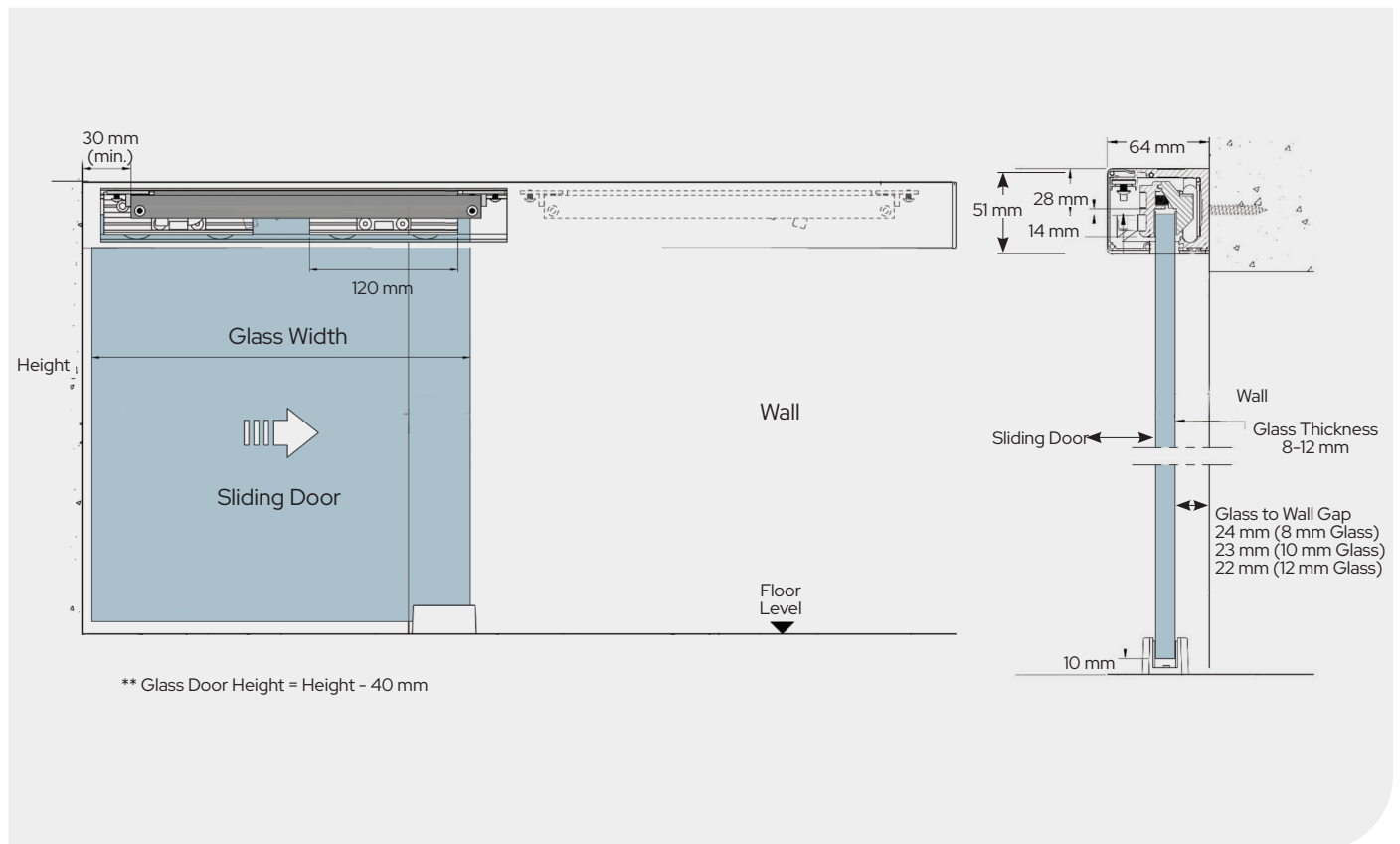
The GSD52 Slim-Line Sliding Door System is easy to install and economical. Coupled with its slim sightline and no glass preparation required for the carriage rollers, the GSD52 is an ideal solution for every designer and installer.



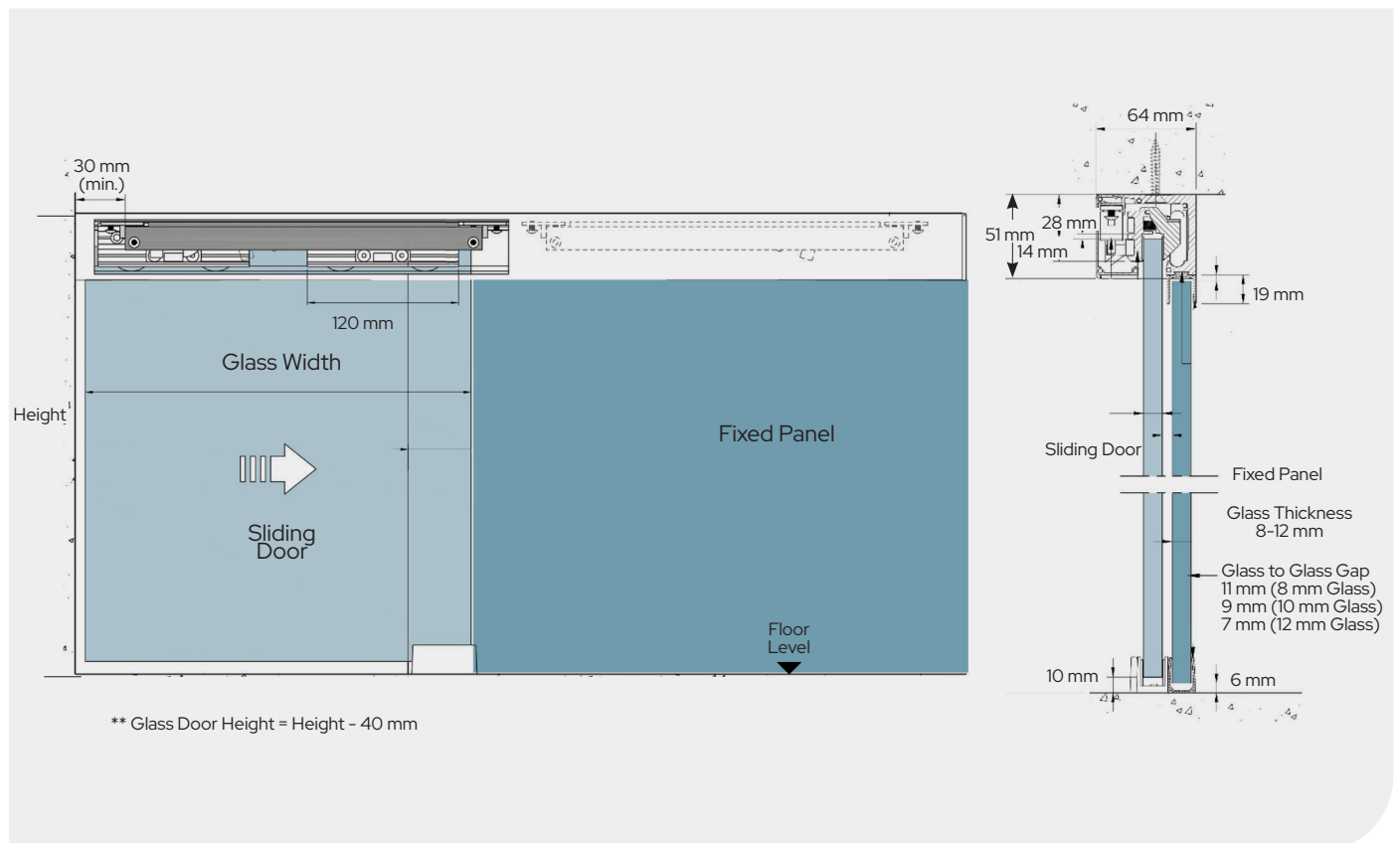
Cat. No.	Description	Size	Colour
GSD523MK1TB	GSD52 Soft Close Kit	3000 mm	Brushed Aluminium
GSD523MK1TSA	GSD52 Soft Close Kit	3000 mm	Satin Anodised
GSD523MK1TML	GSD52 Soft Close Kit	3000 mm	Matt Black
GSD524MK1TB	GSD52 Soft Close Double Door Bi Parting Kit	4000 mm	Brushed Aluminium
GSD524MK1TSA	GSD52 Soft Close Double Door Bi Parting Kit	4000 mm	Satin Anodised
GSD524MK1TML	GSD52 Soft Close Double Door Bi Parting Kit	4000 mm	Matt Black
GSD523MFPK1TB	GSD52 Soft Close Kit with Fixed Panel	3000 mm	Brushed Aluminium
GSD523MFPK1TSA	GSD52 Soft Close Kit with Fixed Panel	3000 mm	Satin Anodised
GSD523MFPK1TML	GSD52 Soft Close Kit with Fixed Panel	3000 mm	Matt Black

GSD52 Series | Slim-Line Soft Close Sliding Door System

Wall Mount



Ceiling Mount with Fixed Panel

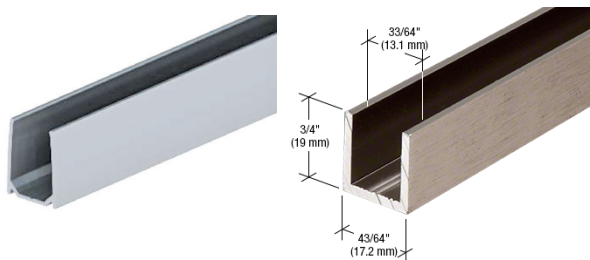




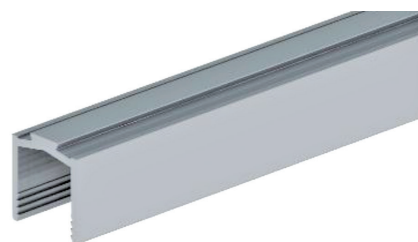
Cat. No.	Finish	Length
GSD52TR30SA	Satin Anodised	3000 mm
GSD52TR30B	Brushed Aluminium	3000 mm
GSD52TR30MBL	Matt Black	3000 mm
GSD52TR40SA	Satin Anodised	4000 mm
GSD52TR40B	Brushed Aluminium	4000 mm
GSD52TR40MBL	Matt Black	4000 mm



Cat. No.	Finish	Length
GSD52FC30SA	Satin Anodised	3000 mm
GSD52FC30B	Brushed Aluminium	3000 mm
GSD52FC30MBL	Matt Black	3000 mm
GSD52FC40SA	Satin Anodised	4000 mm
GSD52FC40B	Brushed Aluminium	4000 mm
GSD52FC40MBL	Matt Black	4000 mm



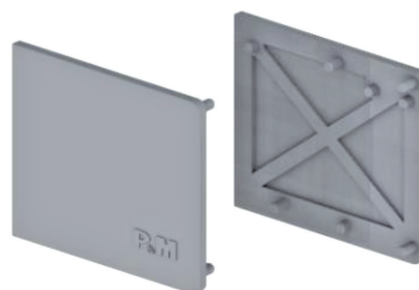
Cat. No.	Finish	Length
GSDBC30MBL	Matt Black	3000 mm
SDCD12A	Satin Anodised	2400 mm
SDCD12BN	Brushed Nickel	2400 mm
SDCD12MBL	Matt Black	2400 mm



Cat. No.	Finish	Length
GSDTC30SA	Satin Anodised	3000 mm
GSDTC30B	Brushed Aluminium	3000 mm
GSDTC30MBL	Matt Black	3000 mm



Cat. No.	Description
GSD52HY72	Hydraulic Soft Close Mechanism



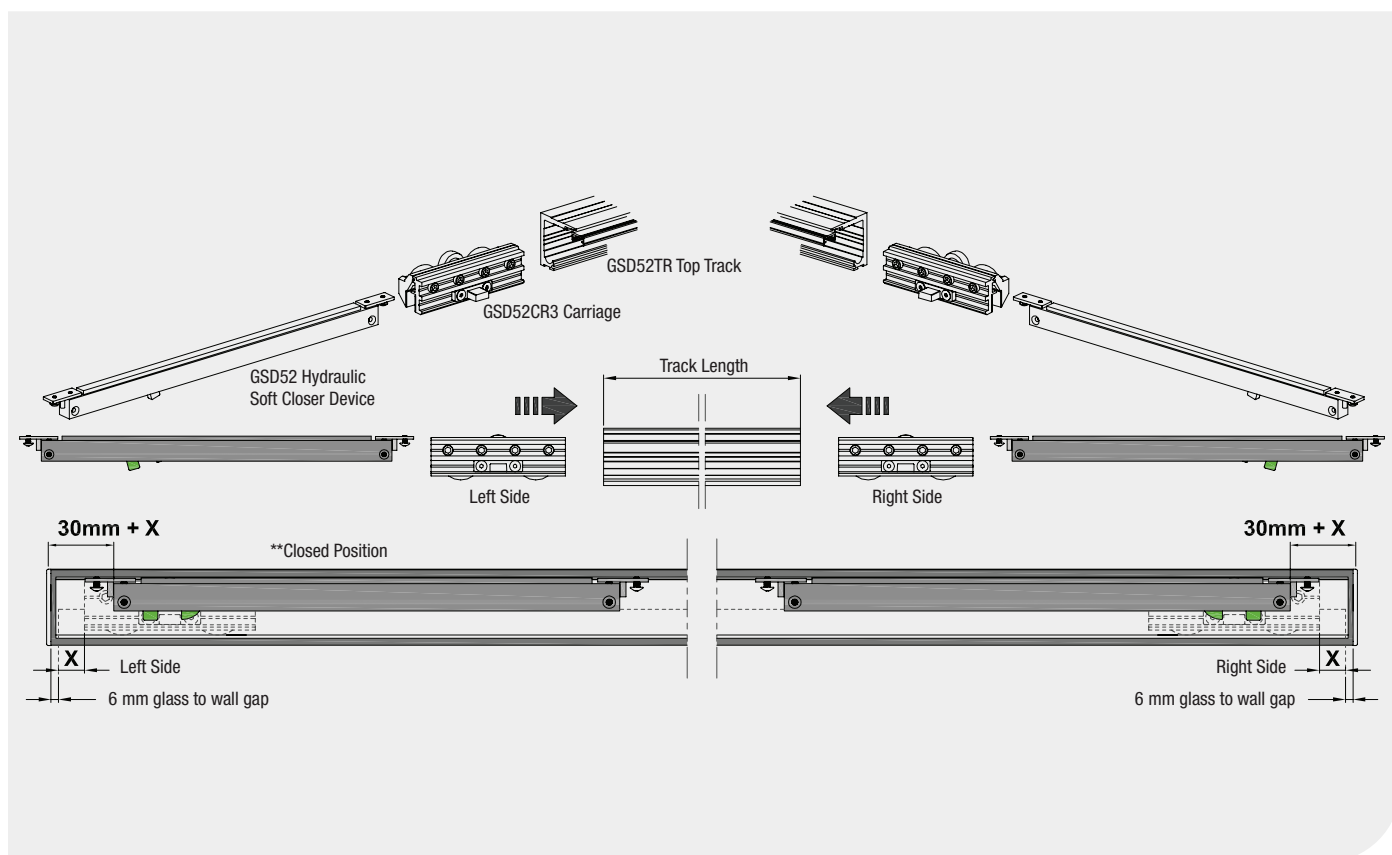
Cat. No.	Description
GSD52EC	Pair of GSD52 Top Track End Caps



Cat. No.	Description
GSD52CR3	Pair of GSD51 Carriages

Cat. No.	Finish
GSD52FGSS	Brushed Stainless Steel
GSD52FGSMBL	Matt Black

Soft Closing Device Details



GSD52 Hydraulic Soft Closer Device to the wall position = **30 mm + X**

Where **X** = protruded length of glass to the clamp

GSD Glass to Track Fitting Brushed Stainless Steel



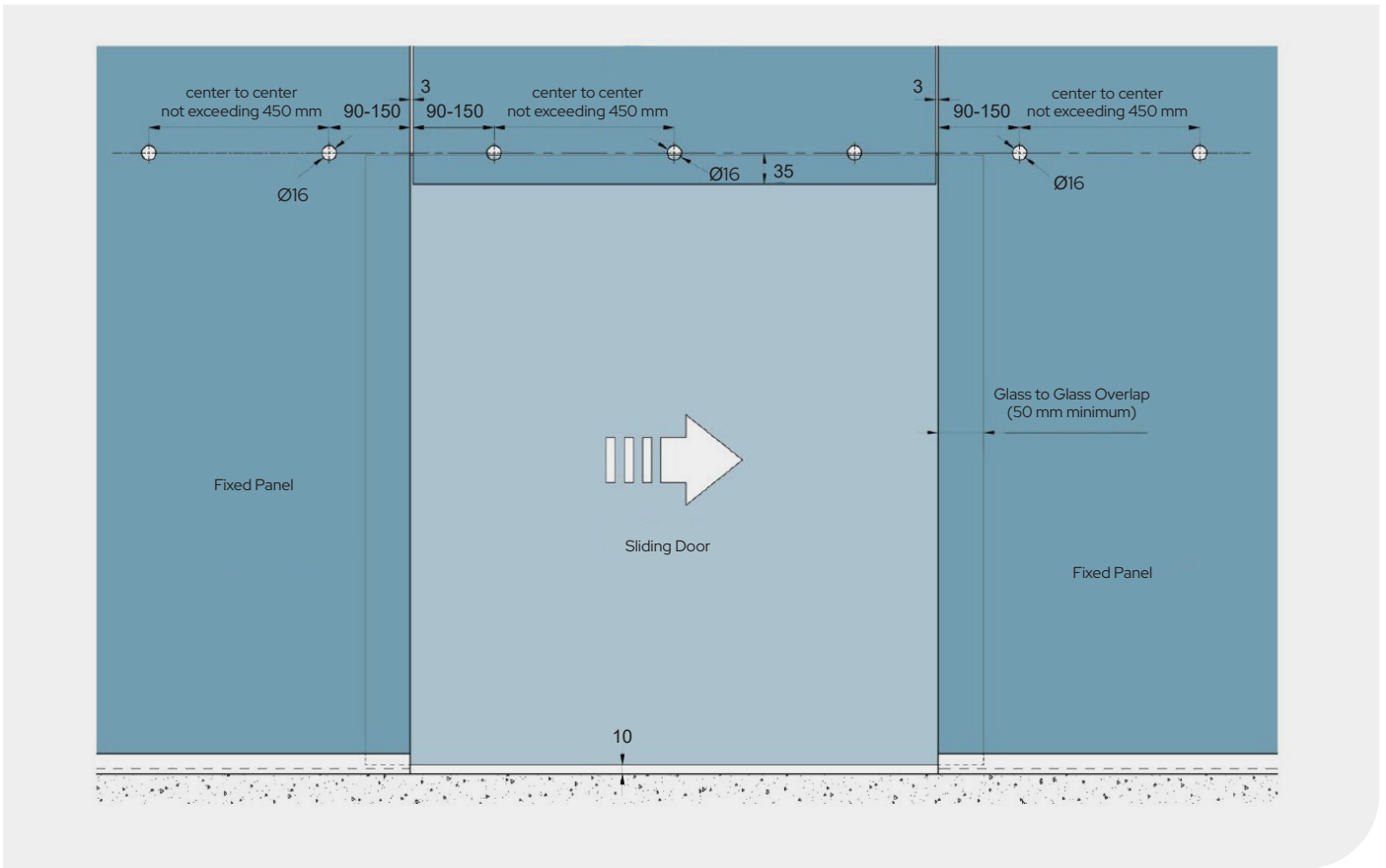
Cat. No.	Description
GSDTTG	Glass Mount Top Track Fitting

Door Specification:

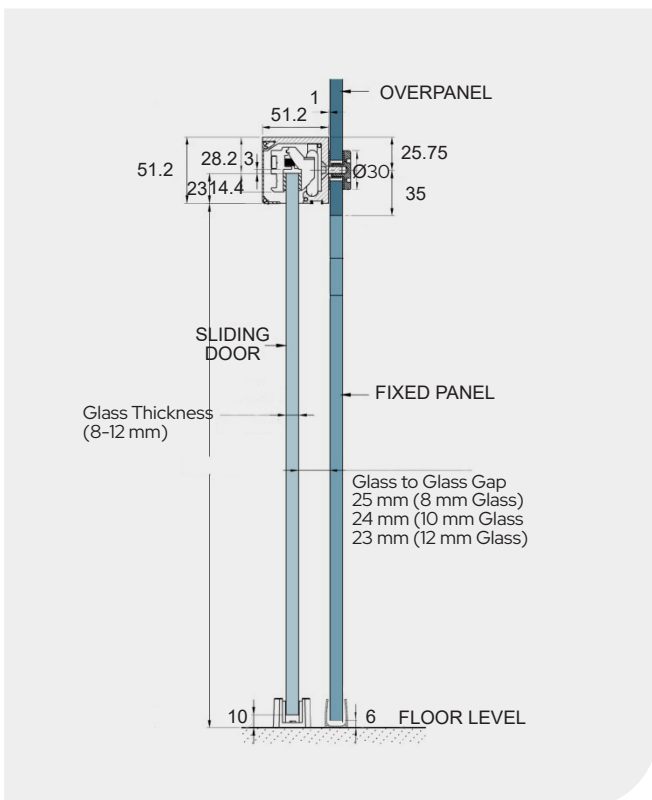
- Min. Door Width: 600 mm
- Max. Door Width: 1000 mm
- Max. Door Height: 2700 mm
- Max. Door Weight: 80 kg
- Glass Thickness: 8-13.52 mm



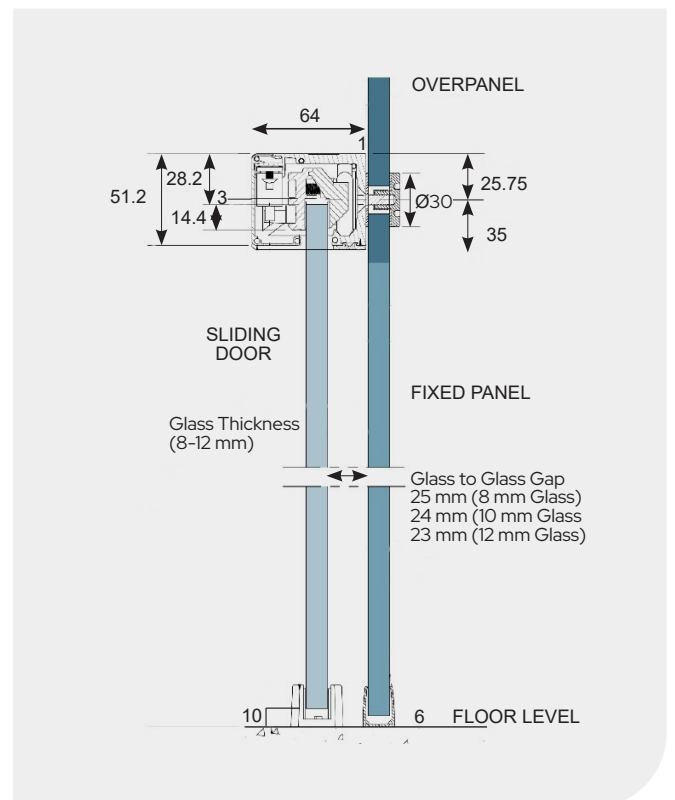
Typical Glass Elevation



GSD51 Side Profile



GSD52 Side Profile





The CRL 490/495 Series Top Hung Sliding Door Kits have an improved hanger assembly which allows this system to accommodate door weights up to 150 kg.

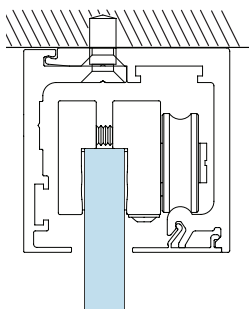
They are available with or without an improved "Softbrake" braking system that can stand up to the demands of door panels of heavier weight. "Softbrake" cushions the opening and closing of the doors gently, quietly, and is completely concealed inside the top track. "Softbrake" engages during the last 102 mm of door travel, preventing the glass from striking the frame or adjacent glass panel.

Minimum sliding panel width of 785 mm for control in a single direction and 1080 mm for control in both directions.

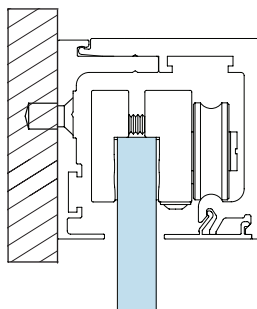
The CRL490/495 Series offers multiple mounting options, is top hung, requires no bottom track and operates with smooth "fingertouch" control. No holes or notches in the glass is required, making the glass more cost effective. The upper clamp and roller assemblies have over 6 mm of height adjustment during installation, allowing for easy correction of openings that are not true and level.

Kits are available in satin anodised and brushed stainless anodised finishes.

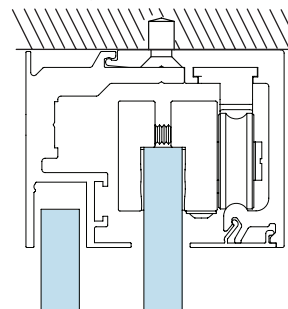
Single Slider Kit
Ceiling Mount Illustration



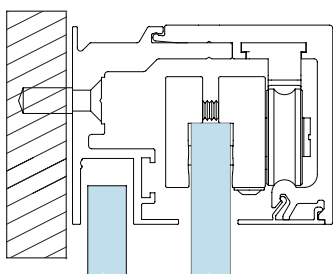
Single Slider Kit
Wall Mount Illustration



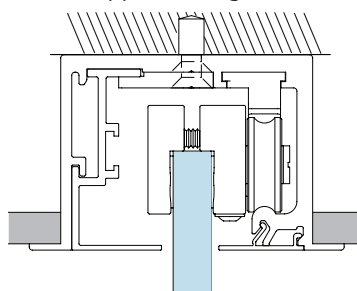
Single Slider
With Fixed Panel Kit
Ceiling Mount Illustration



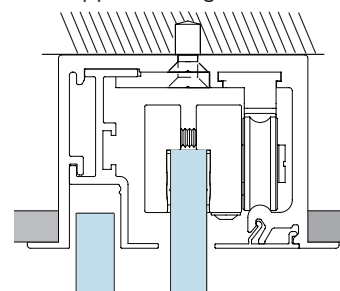
Single Slider
With Fixed Panel Kit
Wall Mount Illustration



Single Slider Kit
Dropped Ceiling Illustration



Single Slider
With Fixed Panel Kit
Dropped Ceiling Illustration



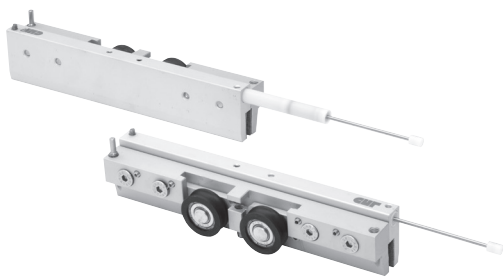
CRL490/495 Series | Top Hung Sliding Door System - 150kg Limit

CRL490/495 Door Kits

*Each Kit Contains Track Lengths of 3000 mm

Cat. No. With Standard Stops	Cat. No. With Softbrake	Description	Colour
CRL490	CRL495	Wall or Ceiling Mount Single Slider Kit	Satin Anodised
CRL490BSA	CRL495BSA	Wall or Ceiling Mount Single Slider Kit	Brushed Stainless Anodised
CRL4901	CRL4951	Wall or Ceiling Mount Single Slider With Fixed Panel Kit	Satin Anodised
CRL4901BSA	CRL4951BSA	Wall or Ceiling Mount Single Slider With Fixed Panel Kit	Brushed Stainless Anodised
CRL490D	CRL495D	Dropped Ceiling Mount Single Slider Kit	Satin Anodised
CRL490DBSA	CRL495DBSA	Dropped Ceiling Mount Single Slider Kit	Brushed Stainless Anodised
CRL4901D	CRL4951D	Dropped Ceiling Mount Single Slider With Fixed Panel Kit	Satin Anodised
CRL4901DBSA	CRL4951DBSA	Dropped Ceiling Mount Single Slider With Fixed Panel Kit	Brushed Stainless Anodised

CRL490/495 Hanger Assembly



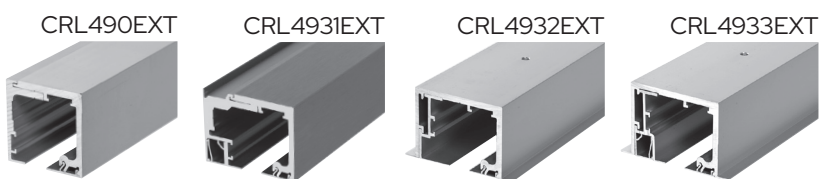
Cat. No.	Description
CRL4939	Hanger Assembly

"Softbrake" Braking System Kit



Cat. No.	Description
CRL4950	Single Side Softbrake Kit
CRL495BK	Double Side Softbrake Kit

Replacement Top Track Extrusions - 3000 mm Long



Cat. No.	Description	Finish
CRL490EXT	Extrusion Kit for CRL490/495	Satin Anodised
CRL490BSAEXT	Extrusion Kit for CRL490/495	Brushed Stainless Anodised
CRL4931EXT	Extrusion Kit for CRL4901/4951	Satin Anodised
CRL4931BSAEXT	Extrusion Kit for CRL490/495	Brushed Stainless Anodised
CRL4932EXT	Extrusion Kit for CRL490D/495D	Satin Anodised
CRL4932BSAEXT	Extrusion Kit for CRL490D/495D	Brushed Stainless Anodised
CRL4933EXT	Extrusion Kit for CRL4901D/4951D	Satin Anodised
CRL4933BSAEXT	Extrusion Kit for CRL4901D/4951D	Brushed Stainless Anodised





Typical Wall Mount Installation



Typical Glass Mount Installation

- For Use With 10 or 12 mm Glass
- Anti-Lift Feature for Added Safety
- 316 Grade Stainless Steel Construction for Durability
- Ideal for Commercial or Residential Applications
- Comes With Fasteners for Either Flush or Surface Mounting

Door System Limitations	
Maximum Door Weight:	100 kg
Minimum Door Width:	960 mm
Maximum Door Width:	1.36 m
Maximum Door Height:	2.50 m
Maximum Track Length:	6.1 m

CRL has expanded the popular Laguna Series Sliding Glass Door line to include optional "Softbrake" Kits and Double Top Roller Kits. In addition, all kits are now available in either Brushed Stainless or Polished Stainless Finishes, and our most popular kits come in Matt Black. The "Softbrake" option, for wall mounted kits, provides a controlled, quiet closure and prevents the doors from slamming open or closed.

The Laguna Series Sliding Glass Door System can be installed on glass partitions or directly to the side of a sufficiently reinforced wall. The adjustable Top Rollers make final adjustments quick and easy, without the need to remove the door. Their smooth operation and solid stainless steel construction minimizes maintenance issues.

CRL provides you with all the glass attachment fasteners for either flush mounting (requiring a countersunk hole), or surface mounting (requiring a straight hole). The glass attachment fasteners accommodate either 10 or 12 mm toughened glass and can easily be secured using our Cat. No. SW19 or LSSW1 Spanner Head Wrenches.

Standardized sets allow you to make planning and purchasing quick and easy for basic installations. We offer a wide variety of kits for Wall Mounting or Glass Mounting. We also offer an Adapter Kit, Cat. No. LSWMADT, to convert these Laguna Kits for use with wood doors.



- Easily Adapts Our Laguna Slider Kits to Work With Wood Doors From 35 or 45 mm Thick
- 316 Grade Stainless Steel for Durability

Cat. No.	Finish
LSWMADT	Brushed Stainless
LSWMADTPS	Polished Stainless
LSWMADTML	Matt Black



(4)
Mounting Bolts to
secure Wood Door to
Anti-Lift Top Rollers



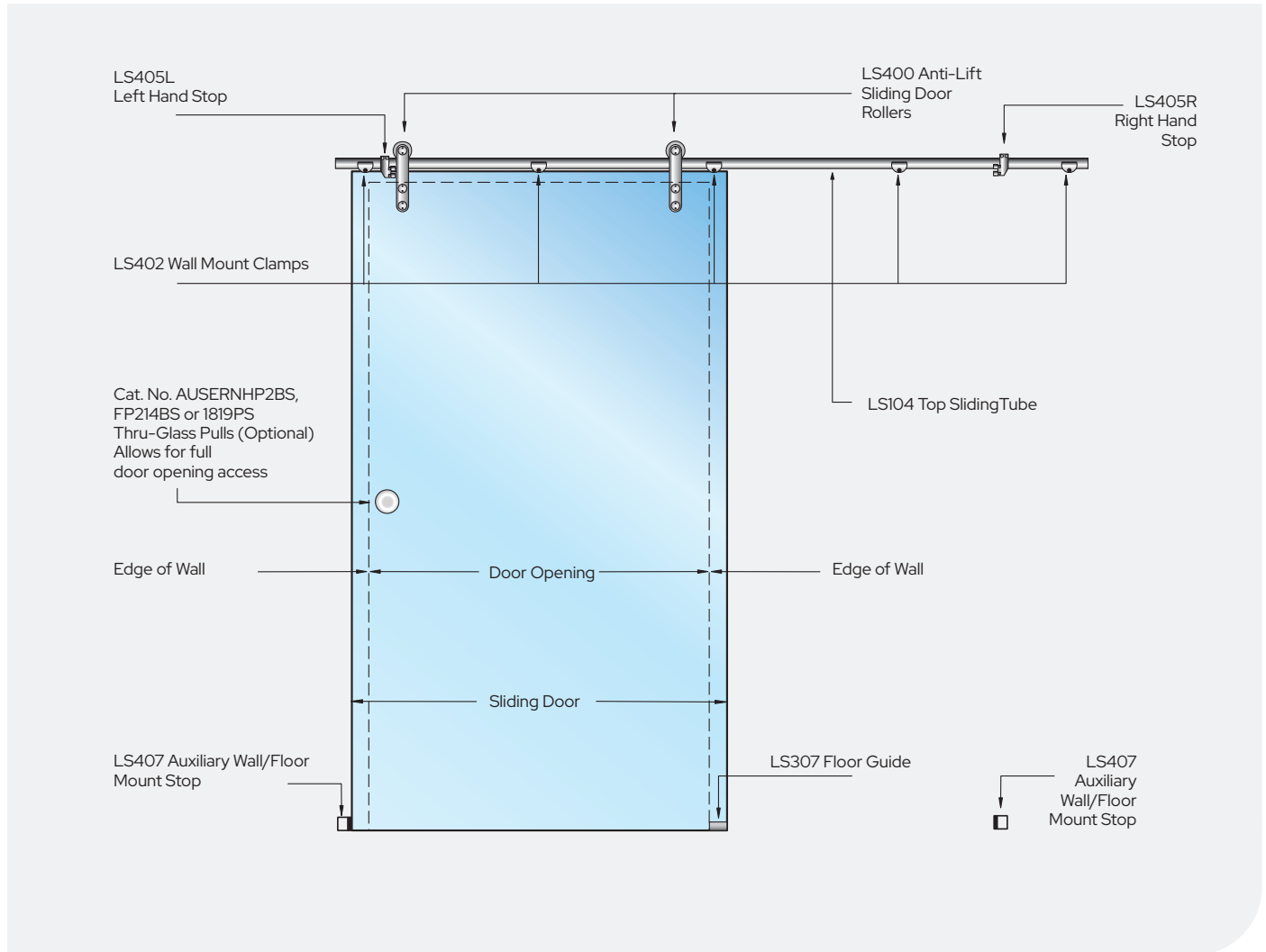
(5)
Wall Mount Bracket
Spacers fit behind
LS402 Clamps



(1)
Floor Guide

Now you can easily adapt any of our Laguna Sliding Door Systems to work with wood doors. The Adaptor Kit allows you to mount Laguna Slider Hardware on wood doors ranging in thickness from 35 or 45 mm. Recommended for solid wood doors, but can be used on hollow core doors that have adequate structure to accept the hardware.

Each LSWMADT Kit comes with four Mounting Bolts for attaching the hardware to the wood door, five 10 mm thick Wall Mount Bracket Spacers and one Floor Guide. All parts are made of 316 Grade stainless steel. One kit is required per door.



- Optional "Softbrake" Braking System Ensures Quiet Closing and Prevents Slamming
- Kit Contains All Necessary Hardware
- 316 Grade Stainless Steel Construction
- Anti-Lift Design for Added Safety
- All Kits Include Fasteners Needed for Either Flush or Surface Mounting

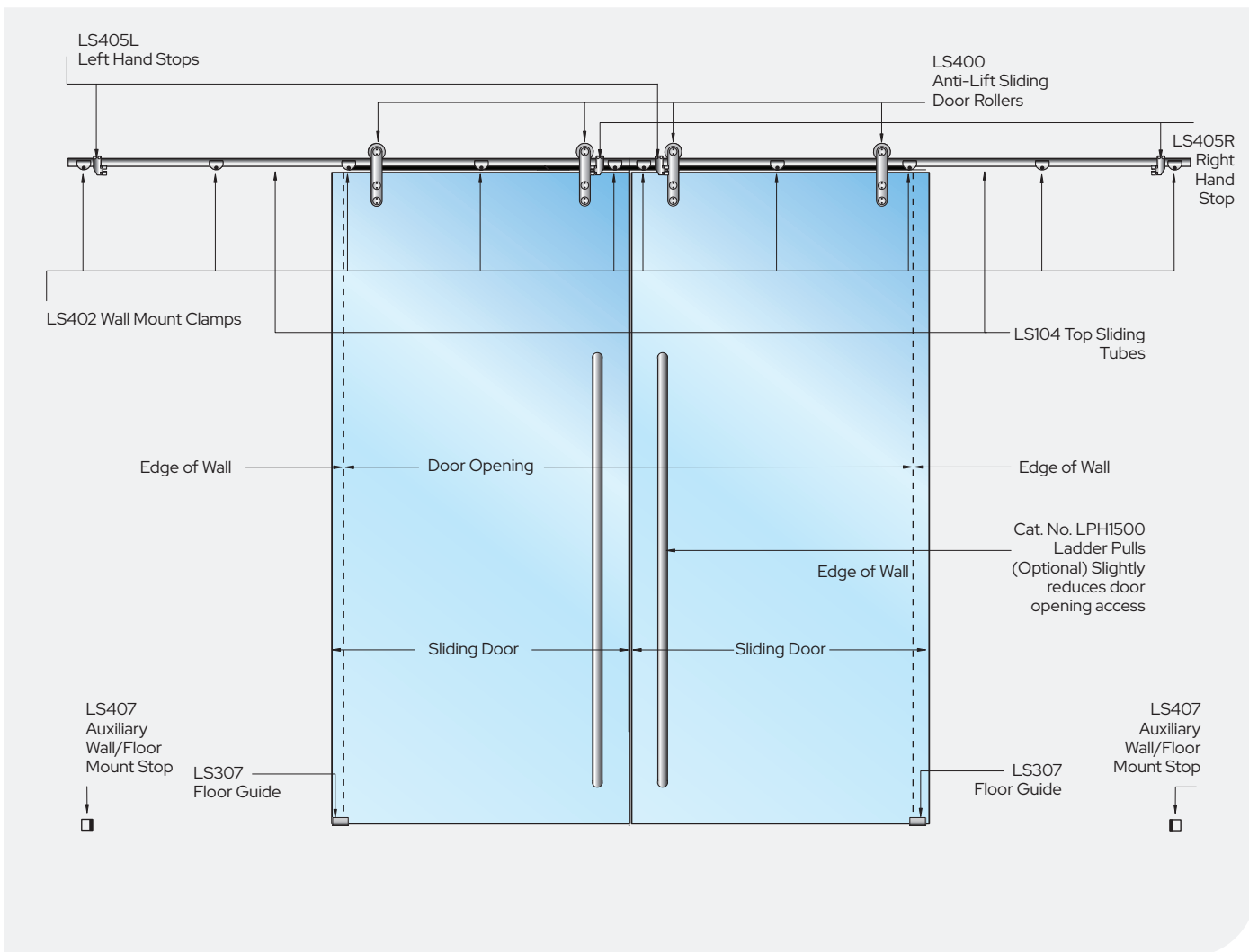
Standard Stops Cat. No.	"Softbrake" Cat. No.	Finish
LSWM5BS	LSWM7BS	Brushed Stainless
LSWM5PS	LSWM7PS	Polished Stainless
LSWM5MBL	LSWM7MBL	Matt Black

Door System Limitations	
Maximum Door Weight:	100 kg
Minimum Door Width:	960 mm
Maximum Door Width:	1.36 m
Maximum Door Height:	2.50 m

The CRL Laguna Series Wall Mount Single Slider Kit contains all the components you will need (except the toughened glass) to complete this style of installation. This model is used in applications where you are attaching a single sliding door to the inside face of a sufficiently reinforced wall.

The Anti-Lift Sliding Door Top Rollers can be attached to the glass with either Surface Mount or Flush Mount Fittings (both are supplied). The Rollers have a 3 mm up or down vertical adjustment to aid in door alignment. Complete glass fabrication details and drawings are available at crlaurence.com.au by typing the catalogue numbers into the search engine.

Typical LSWM6 Kit Shown



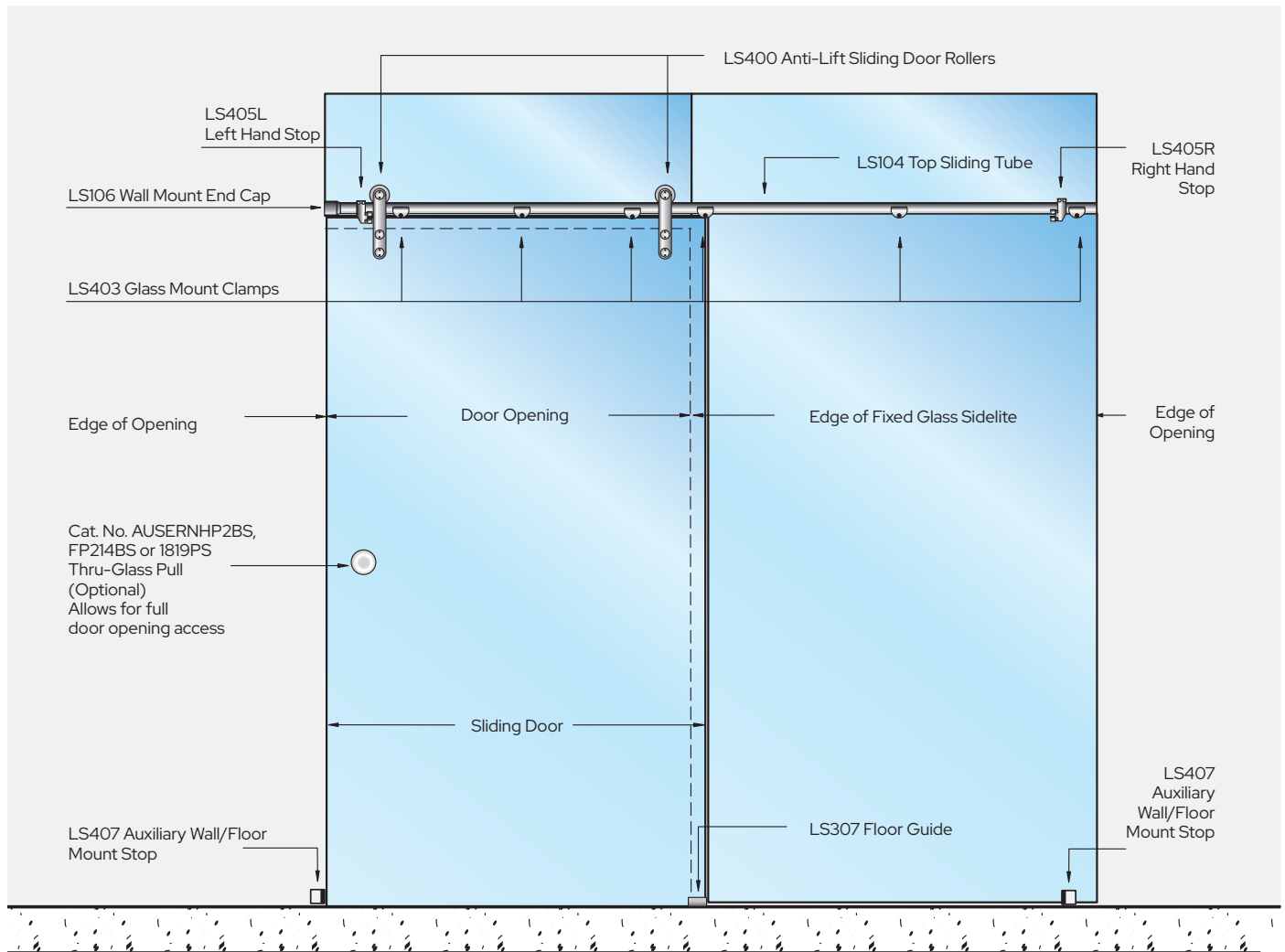
- Optional "Softbrake" Braking System Ensures Quiet Closing and Prevents Slamming
- Kit Contains All Necessary Hardware
- 316 Grade Stainless Steel Construction
- Anti-Lift Design for Added Safety
- For use with 10 or 12 mm Toughened Glass

Standard Stops Cat. No.	"Softbrake" Cat. No.	Finish
LSWM6BS	LSWM8BS	Brushed Stainless
LSWM6PS	LSWM8BS	Polished Stainless
LSWM6MBL	LSWM8MBL	Matt Black

Door System Limitations	
Maximum Door Weight:	100 kg
Minimum Door Width:	960 mm
Maximum Door Width:	1.36 m
Maximum Door Height:	2.50 m

The CRL Laguna Series Wall Mount Bi-Parting Slider Kit contains all the components you will need (except the toughened glass) to complete this style of installation. This model is used in applications where you are attaching two sliding doors to the inside face of a sufficiently reinforced wall.

The Anti-Lift Sliding Door Top Rollers can be attached to the glass with either Surface Mount or Flush Mount Fittings (both are supplied). The Rollers have a 3 mm up or down vertical adjustment to aid in door alignment. Complete glass fabrication details and drawings are available at crlaurence.com.au by typing the catalogue numbers into the search engine.

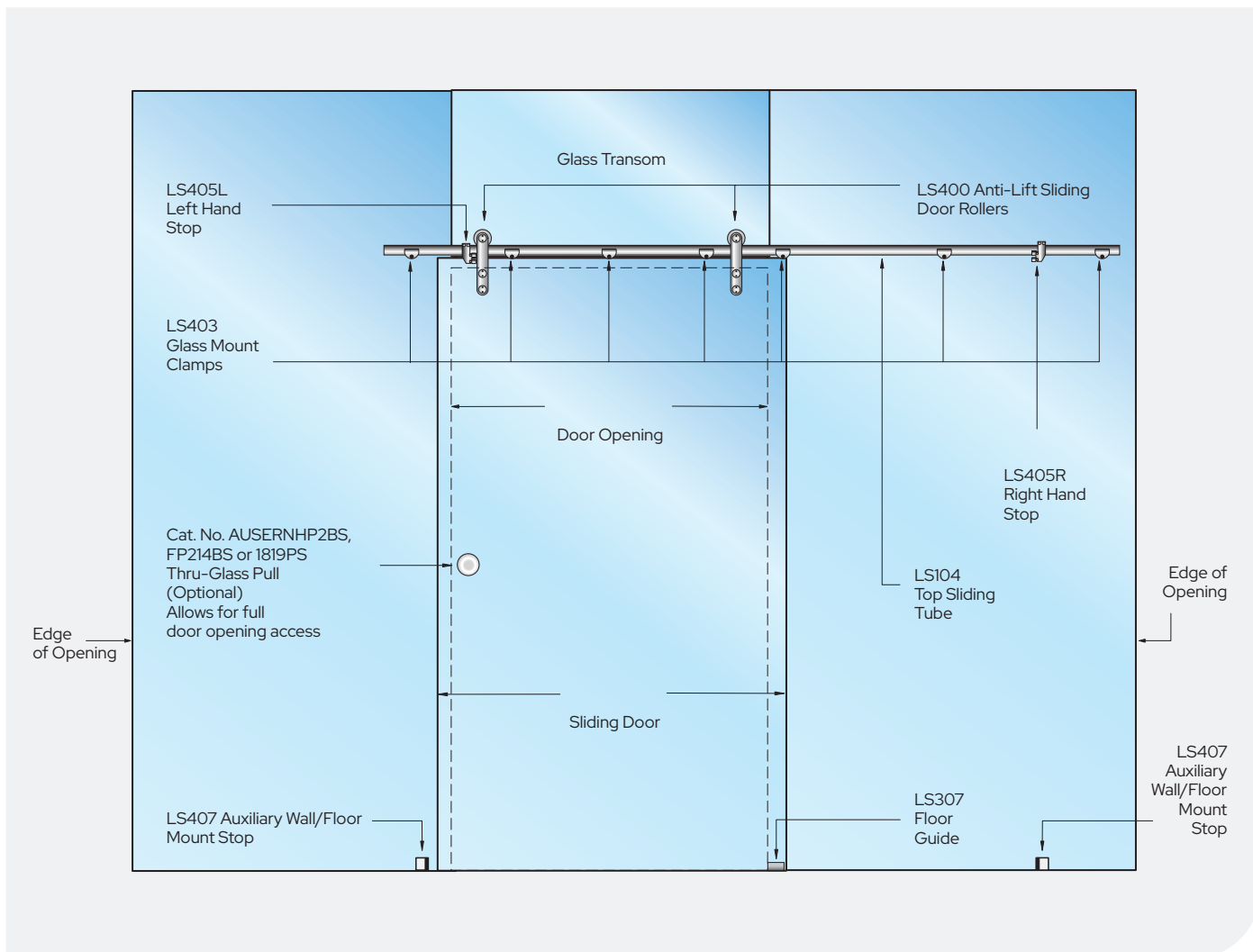


- Kit Contains All Necessary Hardware to Complete Installation
- 316 Grade Stainless Steel Construction
- Improved Anti-Lift Design for Added Safety
- All Kits Include Fasteners Needed for Either Flush or Surface Mounting
- For Use With 10 or 12 mm Toughened Glass

Cat. No.		Finish	Door System Limitations	
LSGM5BS		Brushed Stainless	Maximum Door Weight:	100 kg
LSGM5PS		Polished Stainless	Minimum Door Width:	960 mm
LSGM5MBL		Matt Black	Maximum Door Width:	1.36 m
			Maximum Door Height:	2.50 m

The CRL Laguna Series Glass Mount Single Slider Kit contains all the components you will need (except the toughened glass) to complete this style of installation. This model is used in applications where you are attaching a single sliding door in an 'all-glass' opening where you have a wall on one end next to the door, a glass transom above the door, and a fixed glass panel on the other side of the door. Bi-parting double doors are not possible for this application.

The Anti-Lift Sliding Door Single Top Rollers can be attached to the glass with either Surface Mount or Flush Mount Fittings (both are supplied). The Rollers have a 3 mm up or down vertical adjustment to aid in door alignment. Complete glass fabrication details and drawings are available at crlaurence.com.au by typing the catalogue numbers into the search engine.



- Kit Contains All Necessary Hardware to Complete Installation
- 316 Grade Stainless Steel Construction
- Anti-Lift Design for Added Safety
- All Kits Include Fasteners Needed for Either Flush or Surface (Straight Hole) Mounting
- For Use With 10 or 12 mm Toughened Glass

Cat. No.	Finish
LSGM6BS	Brushed Stainless
LSGM6PS	Polished Stainless
LSGM6MBL	Matt Black

Door System Limitations	
Maximum Door Weight:	100 kg
Minimum Door Width:	960 mm
Maximum Door Width:	1.36 m
Maximum Door Height:	2.50 m

The CRL Laguna Series Glass Mount Single Slider Kit contains all the components you will need (except the toughened glass) to complete this style of installation. This model is used in applications where you are attaching a single sliding door in an 'all-glass' opening and have a glass transom above the door and fixed glass panels on both sides of the door. Bi-parting double doors are not possible for this application.

The Anti-Lift Sliding Door Single Top Rollers can be attached to the glass with either Surface Mount or Flush Mount Fittings (both are supplied). The Rollers have a 3 mm up or down vertical adjustment to aid in door alignment. Complete glass fabrication details and drawings are available at crlaurence.com.au by typing the catalogue numbers into the search engine.

Anti-Lift Single Top Roller

- Includes Both Surface Mount and Flush Mount Fittings
- Allows 3 mm Up or Down Vertical Adjustment

Cat. No.	"Softbrake" Bracket	Finish
LS400BS	No	Brushed Stainless
LS400PS	No	Polished Stainless
LS400MBL	No	Matt Black
LS500BS	Yes*	Brushed Stainless
LS500PS	Yes*	Polished Stainless
LS500MBL	Yes*	Matt Black

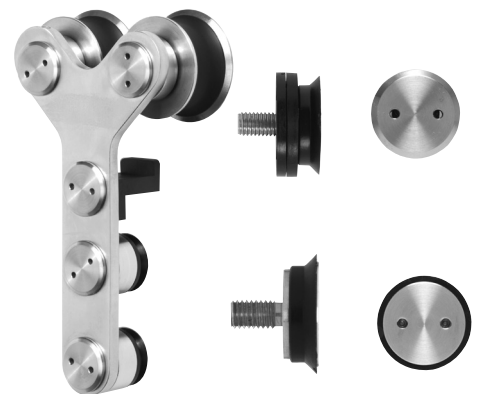


Two CRL Laguna Series Anti-Lift Top Rollers are needed for each sliding door panel. These will be placed on the Cat. No. LS104 Top Sliding Tube after it has been mounted to the glass panels or wall. The door panel is then positioned and attached to the Rollers. Anti-Lift Top Rollers will allow for 3 mm up or down adjustment for final alignment.

Anti-Lift Double Top Roller

- Double Roller for Contemporary Design
- Allows 3 mm Up or Down Vertical Adjustment
- Includes Both Surface Mount and Flush Mount Fittings

Cat. No.	"Softbrake" Bracket	Finish
LS2400BS	No	Brushed Stainless
LS2400PS	No	Polished Stainless
LS2400MBL	No	Matt Black
LS2500BS	Yes*	Brushed Stainless
LS2500PS	Yes*	Polished Stainless
LS2500MBL	Yes*	Matt Black

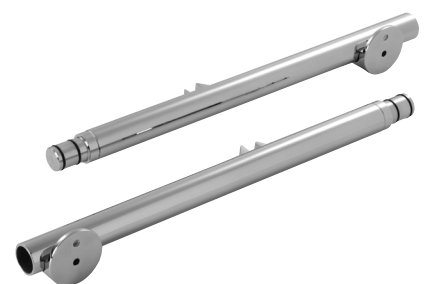


Two CRL Laguna Series Anti-Lift Top Rollers are needed for each sliding door panel. These will be placed on the Cat. No. LS104 Top Sliding Tube after it has been mounted to the glass panels or wall. The door panel is then positioned and attached to the Rollers. Anti-Lift Top Rollers will allow for 3 mm up or down adjustment for final alignment.

Softbrake Kit

- For Use With the Laguna LS500 or LS2500 Anti-Lift Rollers
- Controls the Final 57 mm of Door Travel

Left Hand Cat. No.	Right Hand Cat. No.	Finish
LS505LBS	LS505RBS	Brushed Stainless
LS505LPS	LS505RPS	Polished Stainless
LS505LMBL	LS505RMBL	Matt Black



The CRL Laguna "Softbrake" Kit comes with all the hardware to install on the LS104 Top Sliding Tube, and is used only with the LS500 or LS2500 Anti-Lift Rollers. Some existing Laguna wall mount installations can be retrofitted.

Top Sliding Tube and End Caps

- Supports Wall or Glass Mount Sliding Doors
- Now Available in Two Lengths



Cat. No.	Length
LS104BS	2.6 m
LS104PS	2.6 m
LS104MBL	2.6 m
LS240BS	6.1 m
LS240PS	6.1 m

Cat. No.	Finish
LS104CAPBS	Brushed Stainless
LS104CAPPS	Polished Stainless
LS104CAPMBL	Matt Black

Top Sliding Tube Wall Mount End Cap

- Used for Installations Where Top Sliding Tube Terminates at Wall



Cat. No.	Finish
LS106BS	Brushed Stainless
LS106PS	Polished Stainless
LS106MBL	Matt Black

Top Sliding Tube Wall Mount Clamp

- Used in Wall Mount Applications
- Improved Anti-Lift System



Cat. No.	Finish
LS402BS	Brushed Stainless
LS402PS	Polished Stainless
LS402MBL	Matt Black

Top Sliding Tube Glass Mount Clamp

- Used in Glass Transom and Sidelite Applications
- Improved Anti-Lift System



Cat. No.	Finish
LS403BS	Brushed Stainless
LS403PS	Polished Stainless
LS403MBL	Matt Black

Top Sliding Tube and End Caps

- For Use With LS400 or LS500 Top Rollers
- Protects Finished Opening by Preventing Over-Travel of Door Panel
- Simple to Install



Left Hand Cat. No.	Right Hand Cat. No.	Finish
LS405LBS	LS405RBS	Brushed Stainless
LS405LPS	LS405RPS	Polished Stainless
LS405LMBL	LS405RMBL	Matt Black

Top Sliding Tube Wall Mount End Cap

- For Use With LS2400 or LS2500 Top Rollers
- Protects Finished Opening by Preventing Over-Travel of Door Panel
- Simple to Install



Left Hand Cat. No.	Right Hand Cat. No.	Finish
LS605LBS	LS605RBS	Brushed Stainless
LS605LPS	LS605RPS	Polished Stainless
LS605LMBL	LS605RMBL	Matt Black

Top Sliding Tube Wall Mount Clamp

- Adjustable for 10 and 12 mm Glass Doors



Cat. No.	Finish
LS307BS	Brushed Stainless
LS307PS	Polished Stainless
LS307MBL	Matt Black

Top Sliding Tube Glass Mount Clamp

- Works Along With Top Mount Door Stops to Protect the Finished Opening



Cat. No.	Finish
LS407BS	Brushed Stainless
LS407PS	Polished Stainless
LS407MBL	Matt Black

Top Sliding Tube Ceiling Mount Clamp

- Used in Laguna Ceiling Mount Applications
- Improved Anti-Lift System



Cat. No	Finish
LS412BS	Brushed Stainless
LS412MBL	Matt Black
LS412PS	Polished Stainless

Frameless Sliding Glass Door Pull Handle

- Four Architectural Finishes Available for 12 mm Glass
- Low Projection Will Not Interfere With Sliding Door Action



Cat. No	Finish
SGH8BN	Brushed Nickel
SGH8BR	Brass
SGH8CH	Chrome
SGH8SC	Satin Chrome

Universal Spanner Wrench



Cat. No	Description
USW10	Spanner Pin Sets

Laguna Spanner Head



Cat. No	Description
LSSW1	Wrench Adapter

Laguna Spanner Wrench



Cat. No	Description
SW19	Adjustable Wrench



- For 8 to 10 mm Toughened Glass
- No Notches or Holes Needed in the Glass for Installation
- Rated for Panels Weighing 80 kg

Cat. No	Description	Size
CRL3301	Single Door Kit	4000 mm

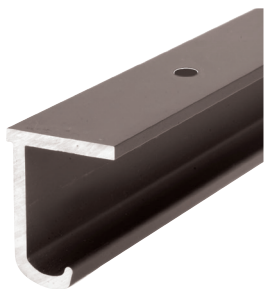
The CRL EZ-Slide 80 Series Top Hung Single Track Sliding Door Kit is an easy to install and cost effective solution to adding 'all-glass' sliding doors in commercial or residential applications.

The only glass fabrication required is to polish the edges. If handles or knobs are desired, holes will be required for their mounting. Everything to complete a single panel slider application is available in our easy to order Kit (except the toughened glass and pull).

NOTE: The EZ-Slide System is not designed for use in shower or steam room applications and should not be used with laminated glass.

Top Track

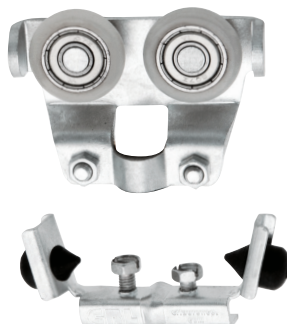
- Pre-Drilled, Ready to Mount
- Dark Bronze Finish



Cat. No	Description
CRL3319	Top Track 4 m Long

Rollers and Stops

- Panels Up to 80 kg



Cat. No	Description
CRL3924	Pair of Rollers and Stoppers

Regulator Bolts

- Allow Easy Adjustment Without Panel Removal



Cat. No	Description
CRL3325	Pair of Regulator Bolts

Glass Clamps

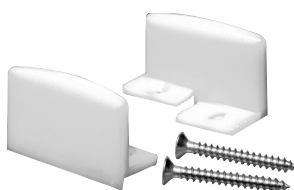
- No Drilling or Notching Required
- Suited for 8 - 10 mm Toughened Glass



Cat. No	Description
CRL3926	Pair of Glass Clamps

Bottom Guide

- Works With EZ-Slide 80/180 Kits



Cat. No	Description
CRL3938	Bottom Guide

See Pages 26-34 For Optional Pull Handle Hardware





- For 10 to 12 mm Toughened Glass
- No Notches or Holes Needed in the Glass for Installation
- Rated for Panels Weighing Up to 180 kg

Cat. No	Description	Size
CRL3601	Single Door Kit	4000 mm

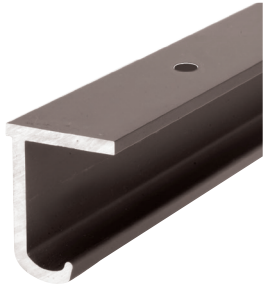
The heavy-duty CRL EZ-Slide 180 Series Top Hung Single Track Sliding Door Kit is an easy to install and cost effective solution to adding 'all-glass' sliding doors in commercial or residential applications. The only glass fabrication required is to polish the edges. If handles or knobs are desired, holes will be required for their mounting. Everything to complete a single panel slider application is available in our easy to order Kit (except the toughened glass and pull). NOTE: The EZ-Slide System is not designed for use in shower or steam room applications and should not be used with laminated glass.

EZ-Slide 180 Series

Components

Top Track

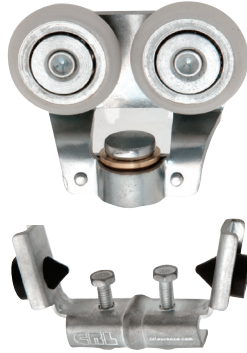
- Pre-Drilled, Ready to Mount
- Dark Bronze Finish



Cat. No	Description
CRL3611	Top Track 4 m Long

Rollers and Stops

- Panels Up to 180 kg



Cat. No	Description
CRL3927	Pair of Rollers and Stoppers

Regulator Bolts

- Allow Easy Adjustment Without Panel Removal



Cat. No	Description
CRL3928	Pair of Regulator Bolts

Glass Clamps

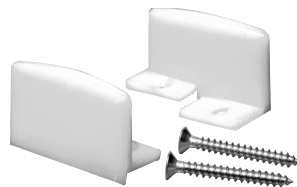
- No Drilling or Notching Required
- Suited for 10 - 12 mm Toughened Glass



Cat. No	Description
CRL3929	Pair of Glass Clamps

Bottom Guide

- Works With EZ-Slide 80/180 Kits



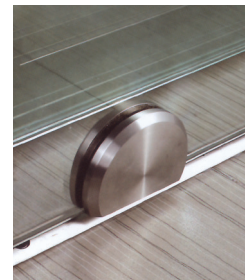
Cat. No	Description
CRL3938	Bottom Guide

See Pages 26-34 For Optional Pull Handle Hardware





- Choice of Configurations for a Single Rolling Door or Bi-Parting Rolling Doors
- Kits Contain All Necessary Hardware (Except the Handle) to Complete the Installation
- One Pair of Rollers Can Accommodate Doors Weighing Up to 130 kg
- Top Guide Track Mounts to Wall
- Bottom Rolling Design
- For Use With 8 to 12 mm Toughened Glass
- Brushed or Polished Stainless Steel Finishes



There are two configurations of GSDH Series Kits for glass doors. Both come with everything you need (except the toughened glass and handle) to complete the installation, including Top and Bottom Track, Top Guides, Top Guide Roller Stops, End Covers, and the Bottom Rollers.

The GSDH Series Bottom Rolling Door System features a unique design that gives the door the appearance that it is gliding on air. The Top Guide Track mounts to the wall and provides for secure and smooth operation of the rolling panel.

The GSDH Bottom Rolling System is a great alternative when the building structure cannot carry the load of a top hung system. Each Kit comes with concealed stops in the Top Track to control the length of travel of the door in the open or closed position. Everything is properly balanced to offer a smooth rolling action with finger touch control.

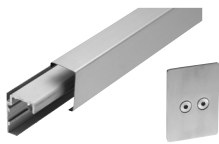
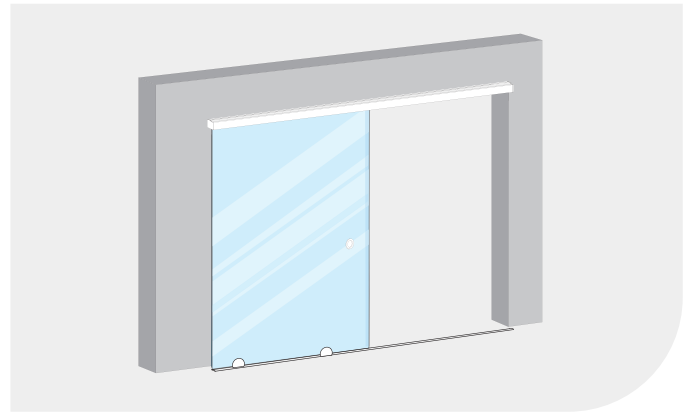
Kits are available in brushed or polished stainless steel finishes, and are intended for use with 8, 10 or 12 mm toughened glass. Individual components can also be ordered to customize the opening. NOTE: Laminated glass should not be used with the GSDH System.

GSDH1 Series

Single Bottom Rolling Door Kit

- 3 m Top and Bottom Tracks
- For Use With 8 to 12 mm Toughened Glass
- Available in Brushed or Polished Stainless Steel

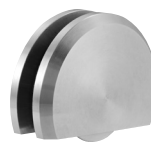
Cat. No	Finish
GSDH1BS	Brushed Stainless
GSDH1PS	Polished Stainless



One Top Guide Track at 3 m in Length and Two End Caps



Two Top Roller Guides and Two Stops



Two Bottom Rollers



One Bottom Roller Track at 3 m in Length

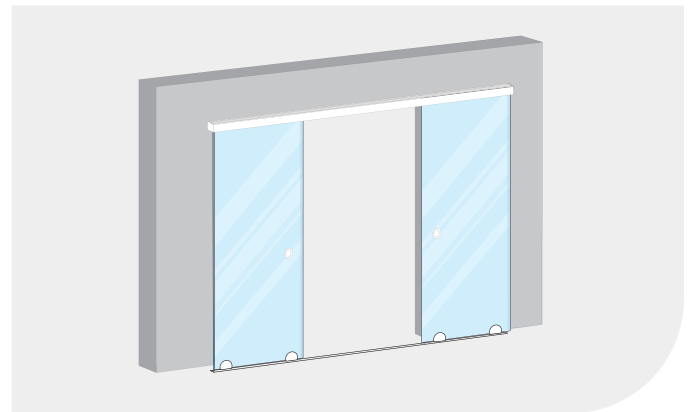
The CRL GSDH1 Series Single Bottom Rolling Door Kit contains all of the components you will need (except the toughened glass and handle) to complete this style of installation. This model can accommodate a single door weighing up to 130 kg, with a maximum width of 1.5 m. NOTE: Laminated glass should not be used with the GSDH1 System.

GSDH2 Series

Bi-Parting Bottom Rolling Door Kit

- 3 m Top and Bottom Tracks
- For Use With 8 to 12 mm Toughened Glass
- Available in Brushed or Polished Stainless Steel

Cat. No	Finish
GSDH2BS	Brushed Stainless
GSDH2PS	Polished Stainless



One Top Guide Track at 3 m in Length and Two End Caps



Four Top Roller Guides and Four Stops



Four Bottom Rollers

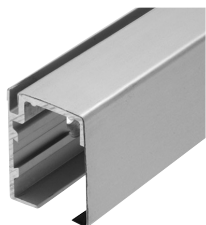


One Bottom Roller Track at 3 m in Length

The CRL GSDH2 Series Bi-Parting Bottom Rolling Door Kit contains all of the components you will need (except the toughened glass and handle) to complete this style of installation. This model can accommodate two bi-parting doors, each weighing up to 130 kg, with a maximum width of 762 mm. NOTE: Excessive door height may cause deflection. Laminated glass should not be used with the GSDH2 System.

Top Track With Cover

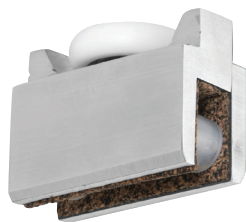
- 3 m Long Aluminium Track
- Available in Brushed or Polished Stainless Finishes



Cat. No	Finish
GSDH140BS	Brushed Stainless
GSDH140PS	Polished Stainless

Top Track Roller Guide

- Moves Glass Doors Quietly With Nylon Rollers



Cat. No	Finish
GSDH120BS	Brushed Stainless
GSDH120PS	Polished Stainless

Top Track Stop

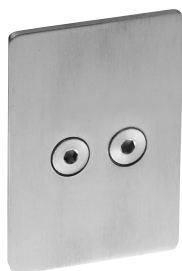
- Provides Positive Stop in Open or Closed Position



Cat. No	Finish
GSDH150BS	Brushed Stainless
GSDH150PS	Polished Stainless

Top Track End Cap

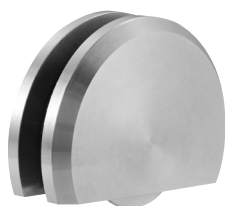
- Available in Brushed or Polished Stainless Steel



Cat. No	Finish
GSDH160BS	Brushed Stainless
GSDH160PS	Polished Stainless

Bottom Roller

- Durable 304 Grade Stainless Steel
- Brushed or Polished Stainless



Cat. No	Finish
GSDH100BS	Brushed Stainless
GSDH100PS	Polished Stainless

Bottom Track

- 3 m Long 304 Grade Stainless Steel
- Available in Brushed or Polished Stainless

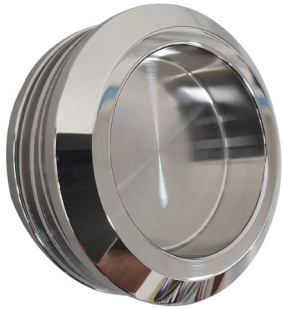


Cat. No	Finish
GSDH130BS	Brushed Stainless
GSDH130PS	Polished Stainless

Finger Pulls

Serenity Thru Glass Pull Handle Polished Stainless

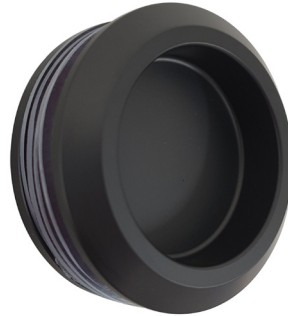
- Suitable for Sliding Glass Doors
- For 8 mm to 10 mm Thick Glass



Cat. No	Cover Finish
AUSERNHP2PS	Polished Stainless

Serenity Thru Glass Pull Handle Matt Black

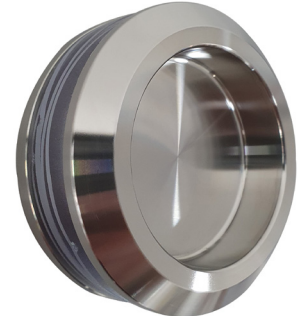
- Suitable for Sliding Glass Doors
- For 8 mm to 10 mm Thick Glass



Cat. No	Cover Finish
AUSERNHP2MBL	Matt Black

Serenity Thru Glass Pull Handle Brushed Stainless

- Suitable for Sliding Glass Doors
- For 8 mm to 10 mm Thick Glass



Cat. No	Cover Finish
AUSERNHP2BS	Brushed Stainless

Polished Stainless Steel Thru-Glass Pull Handle

- Low Profile
- Solid Stainless Steel
- For 10 mm to 12 mm Thick Glass



Cat. No	Finish
1819PS	Polished Stainless

Brushed Stainless Steel Thru-Glass Pull Handle

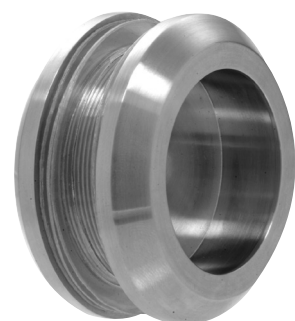
- Low Profile
- Solid Stainless Steel
- For 10 mm to 12 mm Thick Glass



Cat. No	Finish
1819BS	Brushed Stainless

Thru-Glass Pull

- For 10 or 12 mm Toughened Glass
- Low Profile Design Allows for Full Door Opening Access
- Brushed Stainless Steel & Matt Black Finishes



Cat. No	Finish
FP214BS	Brushed Stainless
FP214MBL	Matt Black

Pull Handles |

CRL Ladder Style Back to Back Pull Handles

- Suits 10 mm to 19 mm Thick Glass
- Available in Brushed Stainless, Polished Stainless and Matt Black Finishes
- Supplied with Long Bolts for Aluminium and Timber Door Applications
- 16 mm Diameter Holes Required in Glass
- 32 mm Diameter Tubing



Cat. No	Overall Length	Mounting Hole Centre	Description
LPH600BS	600 mm	300 mm	Ladder Pull 32 mm Dia Back to Back 600 mm Brushed Stainless
LPH600PS	600 mm	300 mm	Ladder Pull 32 mm Dia Back to Back 600 mm Polished Stainless
LPH600MBL	600 mm	300 mm	Ladder Pull 32 mm Dia Back to Back 600 mm Matt Black
LPH900BS	900 mm	600 mm	Ladder Pull 32 mm Dia Back to Back 900 mm Brushed Stainless
LPH900PS	900 mm	600 mm	Ladder Pull 32 mm Dia Back to Back 900 mm Polished Stainless
LPH900MBL	900 mm	600 mm	Ladder Pull 32 mm Dia Back to Back 900 mm Matt Black
LPH1200BS	1200 mm	900 mm	Ladder Pull 32 mm Dia Back to Back 1200 mm Brushed Stainless
LPH1200PS	1200 mm	900 mm	Ladder Pull 32 mm Dia Back to Back 1200 mm Polished Stainless
LPH1200MBL	1200 mm	900 mm	Ladder Pull 32 mm Dia Back to Back 1200 mm Matt Black
LPH1500BS	1500 mm	1200 mm	Ladder Pull 32 mm Dia Back to Back 1500 mm Brushed Stainless
LPH1500PS	1500 mm	1200 mm	Ladder Pull 32 mm Dia Back to Back 1500 mm Polished Stainless
LPH1800BS	1800 mm	1500 mm	Ladder Pull 32 mm Dia Back to Back 1800 mm Brushed Stainless
LPH1800PS	1800 mm	1500 mm	Ladder Pull 32 mm Dia Back to Back 1800 mm Polished Stainless

CRL Offset Ladder Style Back to Back Pull Handles

- Suits 10 mm to 19 mm Thick Glass
- Available in Brushed Stainless, Polished Stainless and Matt Black Finishes
- Supplied with Long Bolts for Aluminium and Timber Door Applications
- 16 mm Diameter Holes Required in Glass
- 32 mm Diameter Tubing



Cat. No	Overall Length	Mounting Hole Centre	Description
OLPH600BS	600 mm	300 mm	Offset Ladder Pull 32 mm Dia Back to Back 600 mm Brushed Stainless
OLPH600PS	600 mm	300 mm	Offset Ladder Pull 32 mm Dia Back to Back 600 mm Polished Stainless
OLPH600MBL	600 mm	300 mm	Offset Ladder Pull 32 mm Dia Back to Back 600 mm Matt Black
OLPH900BS	900 mm	600 mm	Offset Ladder Pull 32 mm Dia Back to Back 900 mm Brushed Stainless
OLPH900PS	900 mm	600 mm	Offset Ladder Pull 32 mm Dia Back to Back 900 mm Polished Stainless
OLPH900MBL	900 mm	600 mm	Offset Ladder Pull 32 mm Dia Back to Back 900 mm Matt Black
OLPH1200BS	1200 mm	900 mm	Offset Ladder Pull 32 mm Dia Back to Back 1200 mm Brushed Stainless
OLPH1200PS	1200 mm	900 mm	Offset Ladder Pull 32 mm Dia Back to Back 1200 mm Polished Stainless
OLPH1200MBL	1200 mm	900 mm	Offset Ladder Pull 32 mm Dia Back to Back 1200 mm Matt Black
OLPH1500BS	1500 mm	1200 mm	Offset Ladder Pull 32 mm Dia Back to Back 1500 mm Brushed Stainless
OLPH1500PS	1500 mm	1200 mm	Offset Ladder Pull 32 mm Dia Back to Back 1500 mm Polished Stainless
OLPH1800BS	1800 mm	1500 mm	Offset Ladder Pull 32 mm Dia Back to Back 1800 mm Brushed Stainless
OLPH1800PS	1800 mm	1500 mm	Offset Ladder Pull 32 mm Dia Back to Back 1800 mm Polished Stainless

CRL Square Ladder Style Back to Back Pull Handles

- Suits 10 mm to 19 mm Thick Glass
- Available in Brushed Stainless, Polished Stainless and Matt Black Finishes
- Supplied with long bolts for Aluminium and Timber Door Applications
- 16 mm Diameter Holes Required in Glass.
- 25 mm Tubing



Cat. No	Overall Length	Mounting Hole Centre	Description
SQLPH600BS	600 mm	300 mm	Square Ladder Pull 25 mm Tubing Back to Back 600 mm Brushed Stainless
SQLPH600PS	600 mm	300 mm	Square Ladder Pull 25 mm Tubing Back to Back 600 mm Polished Stainless
SQLPH600MBL	600 mm	300 mm	Square Ladder Pull 25 mm Tubing Back to Back 600 mm Matt Black
SQLPH900BS	900 mm	600 mm	Square Ladder Pull 25 mm Tubing Back to Back 900 mm Brushed Stainless
SQLPH900PS	900 mm	600 mm	Square Ladder Pull 25 mm Tubing Back to Back 900 mm Polished Stainless
SQLPH900MBL	900 mm	600 mm	Square Ladder Pull 25 mm Tubing Back to Back 900 mm Matt Black
SQLPH1200BS	1200 mm	900 mm	Square Ladder Pull 25 mm Tubing Back to Back 1200 mm Brushed Stainless
SQLPH1200PS	1200 mm	900 mm	Square Ladder Pull 25 mm Tubing Back to Back 1200 mm Polished Stainless
SQLPH1200MBL	1200 mm	900 mm	Square Ladder Pull 25 mm Tubing Back to Back 1200 mm Matt Black
SQLPH1500BS	1500 mm	1200 mm	Square Ladder Pull 25 mm Tubing Back to Back 1500 mm Brushed Stainless
SQLPH1500PS	1500 mm	1200 mm	Square Ladder Pull 25 mm Tubing Back to Back 1500 mm Polished Stainless

CRL Offset Square Ladder Style Back to Back Pull Handles

- Suits 10 mm to 19 mm Thick Glass
- Available in Brushed Stainless, Polished Stainless and Matt Black Finishes
- Supplied with Long Bolts for Aluminium and Timber Door Applications
- 16 mm Diameter Holes Required in Glass.
- 25 mm Tubing



Cat. No	Overall Length	Mounting Hole Centre	Description
OSQLPH600BS	600 mm	300 mm	Offset Square Ladder Pull 25 mm Tubing Back to Back 600 mm Brushed Stainless
OSQLPH600PS	600 mm	300 mm	Offset Square Ladder Pull 25 mm Tubing Back to Back 600 mm Polished Stainless
OSQLPH600MBL	600 mm	300 mm	Offset Square Ladder Pull 25 mm Tubing Back to Back 600 mm Matt Black
OSQLPH900BS	900 mm	600 mm	Offset Square Ladder Pull 25 mm Tubing Back to Back 900 mm Brushed Stainless
OSQLPH900PS	900 mm	600 mm	Offset Square Ladder Pull 25 mm Tubing Back to Back 900 mm Polished Stainless
OSQLPH900MBL	900 mm	600 mm	Offset Square Ladder Pull 25 mm Tubing Back to Back 900 mm Matt Black
OSQLPH1200BS	1200 mm	900 mm	Offset Square Ladder Pull 25 mm Tubing Back to Back 1200 mm Brushed Stainless
OSQLPH1200PS	1200 mm	900 mm	Offset Square Ladder Pull 25 mm Tubing Back to Back 1200 mm Polished Stainless
OSQLPH1200MBL	1200 mm	900 mm	Offset Square Ladder Pull 25 mm Tubing Back to Back 1200 mm Matt Black
OSQLPH1500BS	1500 mm	1200 mm	Offset Square Ladder Pull 25 mm Tubing Back to Back 1500 mm Brushed Stainless
OSQLPH1500PS	1500 mm	1200 mm	Offset Square Ladder Pull 25 mm Tubing Back to Back 1500 mm Polished Stainless

Pull Handles |

CRL "D" Back to Back Pull Handles

- Suits 10 mm to 19 mm Thick Glass
- Available in Brushed Stainless, Polished Stainless and Matt Black Finishes
- Supplied with long bolts for Aluminium and Timber Door Applications
- 16 mm Diameter Holes Required in Glass.
- 32 mm Diameter Tubing



Cat. No	Length	Description
CDH300BS	300 mm	D Handle Back to Back 32 mm Dia 300 mm CTC Brushed Stainless
CDH300PS	300 mm	D Handle Back to Back 32 mm Dia 300 mm CTC Polished Stainless
CDH450BS	450 mm	D Handle Back to Back 32 mm Dia 450 mm CTC Brushed Stainless
CDH450PS	450 mm	D Handle Back to Back 32 mm Dia 450 mm CTC Polished Stainless
CDH450MBL	450 mm	D Handle Back to Back 32 mm Dia 450 mm CTC Matt Black
CDH600BS	600 mm	D Handle Back to Back 32 mm Dia 600 mm CTC Brushed Stainless
CDH600PS	600 mm	D Handle Back to Back 32 mm Dia 600 mm CTC Polished Stainless
CDH600MBL	600 mm	D Handle Back to Back 32 mm Dia 600 mm CTC Matt Black
CDH900BS	900 mm	D Handle Back to Back 32 mm Dia 900 mm CTC Brushed Stainless
CDH900PS	900 mm	D Handle Back to Back 32 mm Dia 900 mm CTC Polished Stainless
CDH1200BS	1200 mm	D Handle Back to Back 32 mm Dia 1200 mm CTC Brushed Stainless
CDH1200PS	1200 mm	D Handle Back to Back 32 mm Dia 1200 mm CTC Polished Stainless
CDH1200MBL	1200 mm	D Handle Back to Back 32 mm Dia 1200 mm CTC Matt Black

CRL Offset "D" Back to Back Pull Handles

- Suits 10 mm to 19mm Thick Glass
- Available in Brushed Stainless, Polished Stainless and Matt Black Finishes
- Supplied with Long Bolts for Aluminium and Timber Door Applications
- 16 mm Diameter Holes Required in Glass.
- 32 mm Diameter Tubing



Cat. No	Length	Description
OCDH300BS	300 mm	Offset D Handle Back to Back 32 mm Dia 300 mm CTC Brushed Stainless
OCDH300PS	300 mm	Offset D Handle Back to Back 32 mm Dia 300 mm CTC Polished Stainless
OCDH450BS	450 mm	Offset D Handle Back to Back 32 mm Dia 450 mm CTC Brushed Stainless
OCDH450PS	450 mm	Offset D Handle Back to Back 32 mm Dia 450 mm CTC Polished Stainless
OCDH450MBL	450 mm	Offset D Handle Back to Back 32 mm Dia 450 mm CTC Matt Black
OCDH600BS	600 mm	Offset D Handle Back to Back 32 mm Dia 600 mm CTC Brushed Stainless
OCDH600PS	600 mm	Offset D Handle Back to Back 32 mm Dia 600 mm CTC Polished Stainless
OCDH600MBL	600 mm	Offset D Handle Back to Back 32 mm Dia 600 mm CTC Matt Black
OCDH900PS	900 mm	Offset D Handle Back to Back 32 mm Dia 900 mm CTC Brushed Stainless
OCDH900BS	900 mm	Offset D Handle Back to Back 32 mm Dia 900 mm CTC Polished Stainless
OCDH1200BS	1200 mm	Offset D Handle Back to Back 32 mm Dia 1200 mm CTC Brushed Stainless
OCDH1200PS	1200 mm	Offset D Handle Back to Back 32 mm Dia 1200 mm CTC Polished Stainless

CRL Square Back to Back Pull Handles

- Suits 10 mm to 19 mm Thick Glass
- Available in Brushed Stainless, Polished Stainless and Matt Black Finishes
- Supplied with Long Bolts for Aluminium and Timber Door Applications
- 16 mm Diameter Holes Required in Glass
- 25 mm Tubing



Cat. No	Length	Description
SQCDH300BS	300 mm	25 mm Square Tube Back to Back Handle 300 mm CTC Brushed Stainless
SQCDH300PS	300 mm	25 mm Square Tube Back to Back Handle 300 mm CTC Polished Stainless
SQCDH450BS	450 mm	25 mm Square Tube Back to Back Handle 450 mm CTC Brushed Stainless
SQCDH450PS	450 mm	25 mm Square Tube Back to Back Handle 450 mm CTC Polished Stainless
SQCDH450MBL	450 mm	25 mm Square Tube Back to Back Handle 450 mm CTC Matt Black
SQCDH600BS	600 mm	25 mm Square Tube Back to Back Handle 600 mm CTC Brushed Stainless
SQCDH600PS	600 mm	25 mm Square Tube Back to Back Handle 600 mm CTC Polished Stainless
SQCDH600MBL	600 mm	25 mm Square Tube Back to Back Handle 600 mm CTC Matt Black
SQCDH900BS	900 mm	25 mm Square Tube Back to Back Handle 900 mm CTC Brushed Stainless
SQCDH900PS	900 mm	25 mm Square Tube Back to Back Handle 900 mm CTC Polished Stainless
SQCDH1200BS	1200 mm	25 mm Square Tube Back to Back Handle 1200 mm CTC Brushed Stainless
SQCDH1200PS	1200 mm	25 mm Square Tube Back to Back Handle 1200 mm CTC Polished Stainless
SQCDH1200MBL	1200 mm	25 mm Square Tube Back to Back Handle 1200 mm CTC Matt Black

CRL Offset Square Back to Back Pull Handles

- Suits 10 mm to 19 mm Thick Glass
- Available in Brushed Stainless, Polished Stainless and Matt Black Finishes
- Supplied with Long Bolts for Aluminium and Timber Door Applications
- 16 mm Diameter Holes Required in Glass
- 25 mm Square Tubing

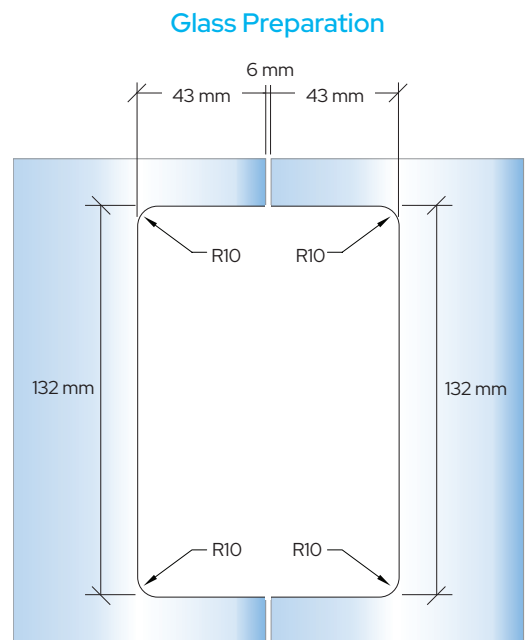
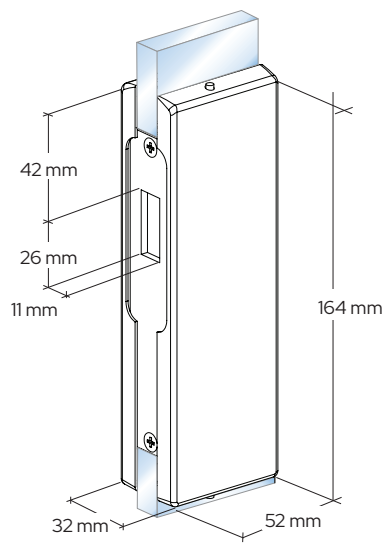
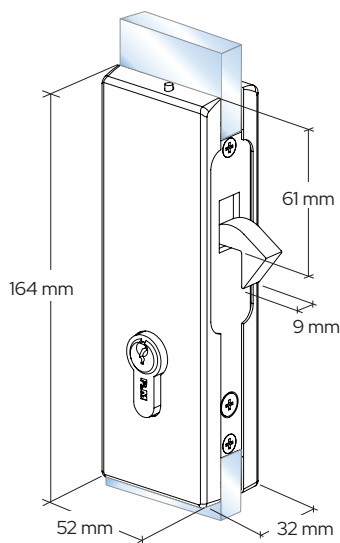


Cat. No	Length	Description
OSQCDH300BS	300 mm	25 mm Offset Square Tube Back to Back Handle 300 mm CTC Brushed Stainless
OSQCDH300PS	300 mm	25 mm Offset Square Tube Back to Back Handle 300 mm CTC Polished Stainless
OSQCDH450BS	450 mm	25 mm Offset Square Tube Back to Back Handle 450 mm CTC Brushed Stainless
OSQCDH450PS	450 mm	25 mm Offset Square Tube Back to Back Handle 450 mm CTC Polished Stainless
OSQCDH450MBL	450 mm	25 mm Offset Square Tube Back to Back Handle 450 mm CTC Matt Black
OSQCDH600BS	600 mm	25 mm Offset Square Tube Back to Back Handle 600 mm CTC Brushed Stainless
OSQCDH600PS	600 mm	25 mm Offset Square Tube Back to Back Handle 600 mm CTC Polished Stainless
OSQCDH600MBL	600 mm	25 mm Offset Square Tube Back to Back Handle 600 mm CTC Matt Black
OSQCDH900BS	900 mm	25 mm Offset Square Tube Back to Back Handle 900 mm CTC Brushed Stainless
OSQCDH900PS	900 mm	25 mm Offset Square Tube Back to Back Handle 900 mm CTC Polished Stainless
OSQCDH1200BS	1200 mm	25 mm Offset Square Tube Back to Back Handle 1200 mm CTC Brushed Stainless
OSQCDH1200PS	1200 mm	25 mm Offset Square Tube Back to Back Handle 1200 mm CTC Polished Stainless
OSQCDH1200MBL	1200 mm	25 mm Offset Square Tube Back to Back Handle 1200 mm CTC Matt Black

- Sliding Door Lock with Euro-Profile Key Cylinder
- Suitable for 8-12 mm Glass Panels
- Polished and Brushed Stainless Steel Finishes



Cat. No	Description	Colour
SDL53BS	Sliding Door Patch Lock	Brushed Stainless
SDL53PS	Sliding Door Patch Lock	Polished Stainless
SDLK53BS	Sliding Door Patch Lock Keeper	Brushed Stainless
SDLK53PS	Sliding Door Patch Lock Keeper	Polished Stainless



Sliding Door Lock Handle

- For 8 to 12 mm Toughened Glass
- Euro Cylinder
- Brushed Stainless Steel Finish



Cat. No	Cover Finish
GSDLHBS	Brushed Stainless

Sliding Door Lock Handle Glass Keeper

- For 8 to 12 mm Toughened Glass
- Euro Cylinder
- Brushed Stainless Steel Finish



Cat. No	Cover Finish
GSDLHGKBS	Brushed Stainless

Sliding Door Push Lock Glass to Glass

- For 8 to 12 mm Toughened Glass
- 45 mm Hole in Glass
- Brushed Stainless Steel Finish
- Glass to Glass



Cat. No	Cover Finish
GSDPLGMBS	Brushed Stainless

Sliding Door Push Lock Glass to Wall

- For 8 to 12 mm Toughened Glass
- 45 mm Hole in Glass
- Brushed Stainless Steel Finish
- Glass to Wall

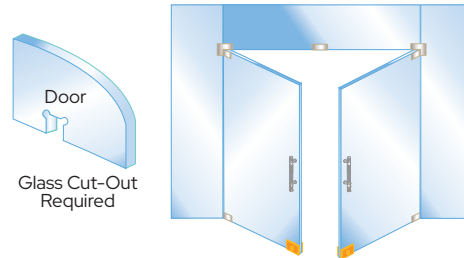


Cat. No	Cover Finish
GSDPLWMBS	Brushed Stainless

Locks | EUR Series Patch Locks

EUR Series Glass Mounted Patch Lock With Keeper Plate For Floor and Jamb Mount Applications

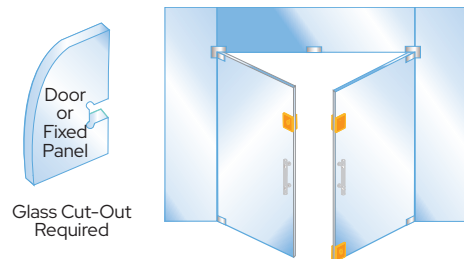
- Aluminium Machined Body with Lock Mechanism and Keyed Cylinder
- Gaskets for Use with 10 or 12 mm Glass



Cat. No	Colour
EUR680A	Satin Anodised
EUR680BR	Polished Brass
EUR680BS	Brushed Stainless
EUR680PS	Polished Stainless

EUR Series Center Housed Patch Lock and Keeper For Glass-to-Glass Mount Applications

- Aluminium Machined Body with Lock Mechanism and Keyed Cylinder
- Gaskets for Use with 10 or 12 mm Glass

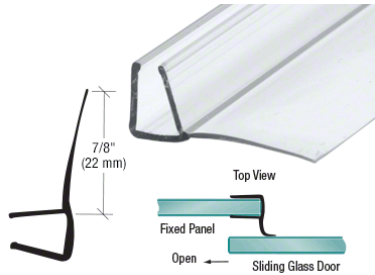


Cat. No	Cat. No	Colour
EUR681A	EUR682A	Satin Anodised
EUR681BR	EUR682BR	Polished Brass
EUR681BS	EUR682BS	Brushed Stainless
EUR681PS	EUR682PS	Polished Stainless

Seals and Weatherstrips

CRL Polycarbonate 'U' with 90 Degree Vinyl Finseal

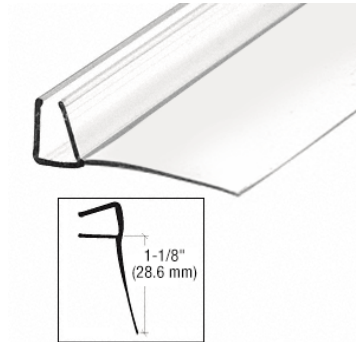
- Suitable for Sliding Glass Doors
- For 8 mm to 12 mm Thick Glass
- 22 mm Finseal
- 2.4 m Long



Cat. No	Glass Thickness
PC0890	8 mm
PC1090	10 mm
PC1200	12 mm

CRL Clear Poly U-Channel with 28.5 mm Vinyl Finseal

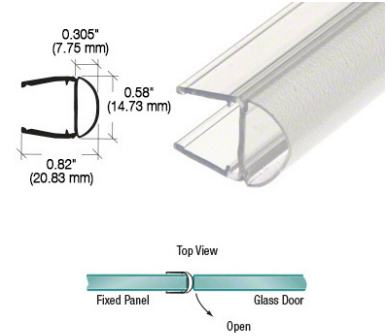
- Suitable for Sliding Glass Doors
- For 8 mm to 12 mm Thick Glass
- 28 mm Finseal
- 2.4 m Long



Cat. No	Glass Thickness
PCSER78	10 mm

CRL Translucent Vinyl Bulb Seal

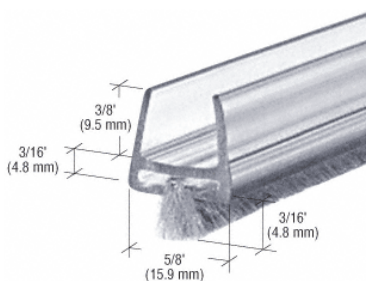
- For 8 mm to 12 mm Thick Glass
- 2.4 m Long
- Soft Bulb Seal



Cat. No	Cover Finish
PCR8	8 mm
PCR10	10 mm
PCR12	12 mm

CRL Clear Polycarbonate Wipe with Pile Weatherstrip

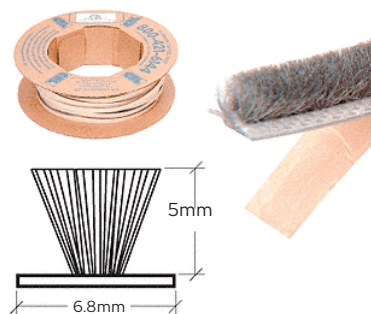
- Suitable for Glass Doors
- For 12 mm Thick Glass
- 2.4 m Long
- 5 mm Pile Height



Cat. No	Glass Thickness
CW12	12 mm

CRL Grey Adhesive Backed Windo-Pile

- Pre-Applied VHB Tape Backing
- Variety of Applications
- 5 mm Pile Height



Cat. No	Roll Length
A71320C	30 m

CRL Translucent Vinyl Bulb Seal with Pre-Applied Tape

- Sold in packs of 5 Lengths
- Two Bulb Heights 4.4 & 5.6mm
- Pre-Applied VHB Tape Backing
- 2.4 m Long Per Length



Cat. No	Bulb Height
SDTJT2	4.4 mm
SDTBT2	5.6 mm



Call on 1800 424 275
Fax on 1800 813 013

Melbourne

42 Enterprise Drive
Rowville
VIC 3178
Tel. +61 3 9764 8322

Sydney

9 Shale Place
Eastern Creek
NSW 2766
Tel. +61 2 9851 3444

Enquiries

Email: crlaus@crlaurence.com

www.crlaurence.com.au

CRL®