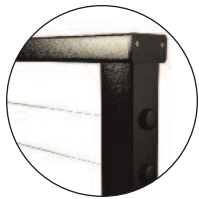


# HANSEN ARCHITECTURAL SYSTEMS IS NOW PART OF THE CRL FAMILY OF BRANDS

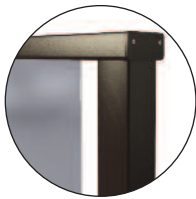
**Hansen** has over 20 years of experience specializing in the design, fabrication, and installation of high-quality Aluminum Railing Systems. Their product offering includes Cable Railings, Glass Railings, and Sun Control Systems. Architects and contractors have been specifying Hansen Railing Systems for decades on hundreds of notable commercial and residential projects across the nation. CRL is a leader in the railing industry, and Hansen's strong brand reputation was a logical fit for our ARS Aluminum Railing and AWS Aluminum Windscreen product lines. We look forward to leveraging our strengths to bring our customers Hansen's high-quality products, and to benefiting from Hansen's expertise in the industry.



## HIGH PERFORMANCE ALUMINUM SYSTEMS Select Your Style



CABLE RAILING



GLASS RAILING

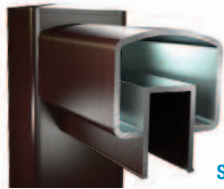


PICKET RAILING



GATE SYSTEMS

## EIGHT STANDARD SYSTEMS TO CHOOSE FROM Select Your Top Rail



SERIES 100



SERIES 200



**NEW!**

SERIES 200X



**NEW!**

SERIES 300X



**NEW!**

SERIES 320X



SERIES 350X



**NEW!**

SERIES 500



**NEW!**

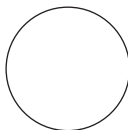
WOOD TOP RAIL  
ADAPTER

## EIGHT STANDARD COLORS, CUSTOM FINISHES AVAILABLE



**NEW!**

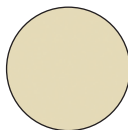
CLASS 1 CLEAR  
ANODIZED



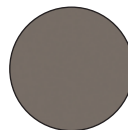
SKY  
WHITE GLOSS



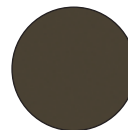
MATTE  
BLACK



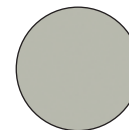
OYSTER  
WHITE GLOSS



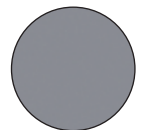
BEIGE  
GRAY GLOSS



BRONZE  
MATTE



AGATE  
GRAY GLOSS



METALLIC  
SILVER



WORLD-CLASS ALUMINUM RAILING  
**HANSEN**  
ARCHITECTURAL SYSTEMS  
A DIVISION OF C.R. LAURENCE CO., INC.  
[aluminumrailing.com](http://aluminumrailing.com)



**C.R. LAURENCE COMPANY**

[crlaurence.com](http://crlaurence.com) | [aluminumrailing.com](http://aluminumrailing.com)

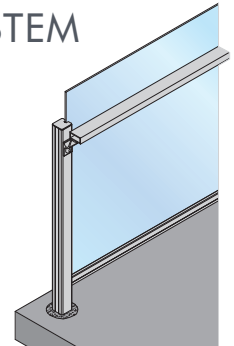
Phone: (800) 421-6144 Ext. 7730 | Email: [railings@crlaurence.com](mailto:railings@crlaurence.com)

# HANSEN ARCHITECTURAL SYSTEMS IS NOW PART OF THE CRL FAMILY OF BRANDS



## CRL-HANSEN ARS 1100 SERIES GLASS GUARD RAIL SYSTEM

- Designed and Engineered With No Cap Rail Required
- Integrated Interior Hand Rail Satisfies Guard Rail Requirements
- Easy-to-Install, Code-Compliant Barrier for View-Oriented Projects



## CRL-HANSEN ARS CABLE RAILING SYSTEM

- New Narrow Profile 1-1/8" (29 mm) Trim Line Post Kits for Cleaner Sightlines
- Available in 1/8" (3 mm) and 3/16" (5 mm) Diameter 316 Grade Stainless Steel Cable Kits
- New Advanced Cable System for Faster Installation
- Complete Post Kits Available, Drilled and Prepped for Cable and Tensioning Hardware
- Post Kits Come Complete With Base Plate, Moisture Barrier Gasket, Stainless Steel Washers, Screws, and Bolt Cover Buttons



## CRL-HANSEN AWS TECHWALL GLASS WINDSCREEN SYSTEM

- Reduces Street Noise
- Rapid Installation
- Low Maintenance With Special Baked-On Polyester Powder Coating for Superior Corrosion Resistance
- 1/4" (6 mm) or 3/8" (10 mm) Glass is Secured Using a Weather-Tight, Vibration-Free Vinyl Channel That is Impervious to UV Rays



## CRL-HANSEN ARS GATE SYSTEM

- Ready to Install Stock Gate Sizes for ARS Series Railings
- Picket Infills (Included) or Glass (Not Included)
- Welded and Finished With Powder Coating
- Eight Standard Finishes In Stock, Custom Finishes Also Available
- Designed for 36" Wide x 42" Tall Railing Systems, With Custom Sizes Available

AVDB4319\_09.17